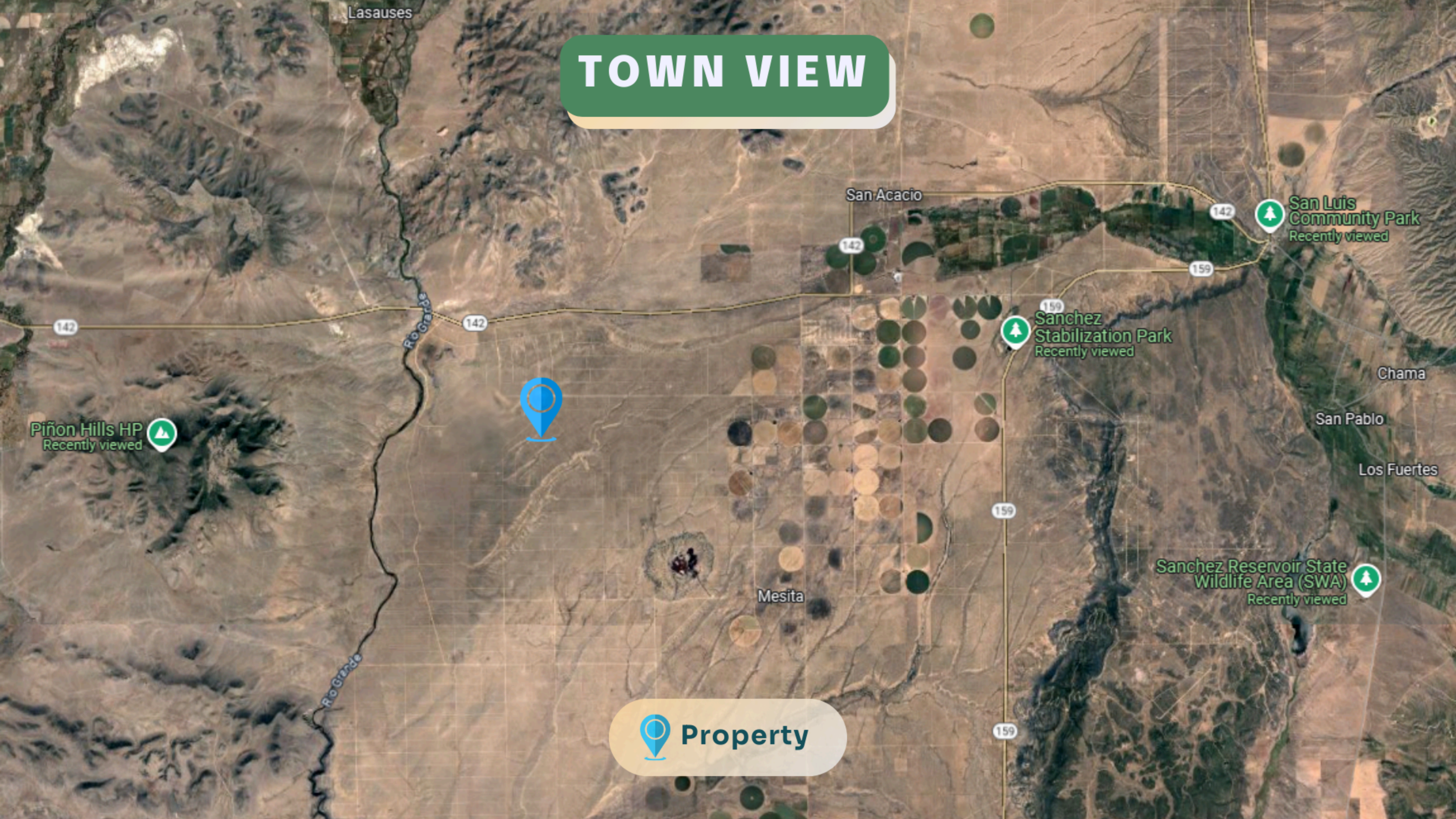


TOWN VIEW



Lasauses

San Acacio

San Luis Community Park
Recently viewed

Sanchez Stabilization Park
Recently viewed

Piñon Hills HP
Recently viewed


Sanchez Reservoir State Wildlife Area (SWA)
Recently viewed

Chama

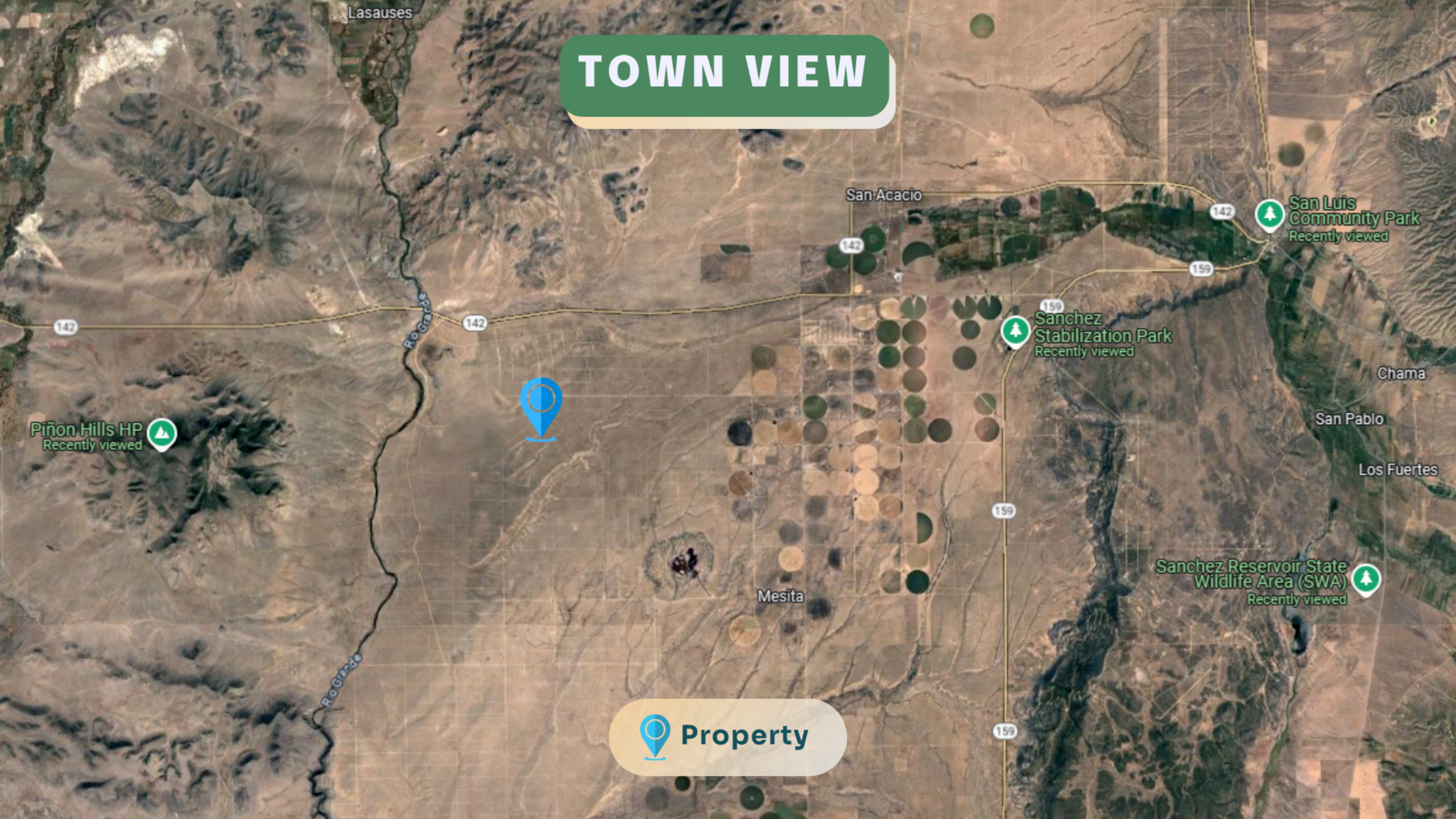
San Pablo

Los Fuertes

Mesita

 **Property**

TOWN VIEW



Lasauses

San Acacio

San Luis Community Park
Recently viewed

Piñon Hills HP
Recently viewed

Sanchez Stabilization Park
Recently viewed


Chama

San Pablo

Los Fuertes

Sanchez Reservoir State Wildlife Area (SWA)
Recently viewed

Mesita

 Property

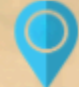
KEY ACCESS ROUTES

US Highway 285

Manassa

43 min
29.6 miles

Centennial School
District R-1

The  property is situated on Road 2.8, offering convenient access from both US Hwy 285 and CO-159, making it highly accessible.

Monte Vista
National
Wildlife
Refuge

Wa

Henry

Estrella

Capulin

La Jara

Sanford

Lasauses

San Acacio

San Luis

Chama

Los Cerritos

Centennial School
District R-1

Mesita

Culebra Peak

Fox Creek

Cañon

Antonito

San Antonio

Ute Mountain

Costilla

Ventero

Amalia

Fort Garland

160

Sangre De
Cristo Ranches


Trinchera Peak

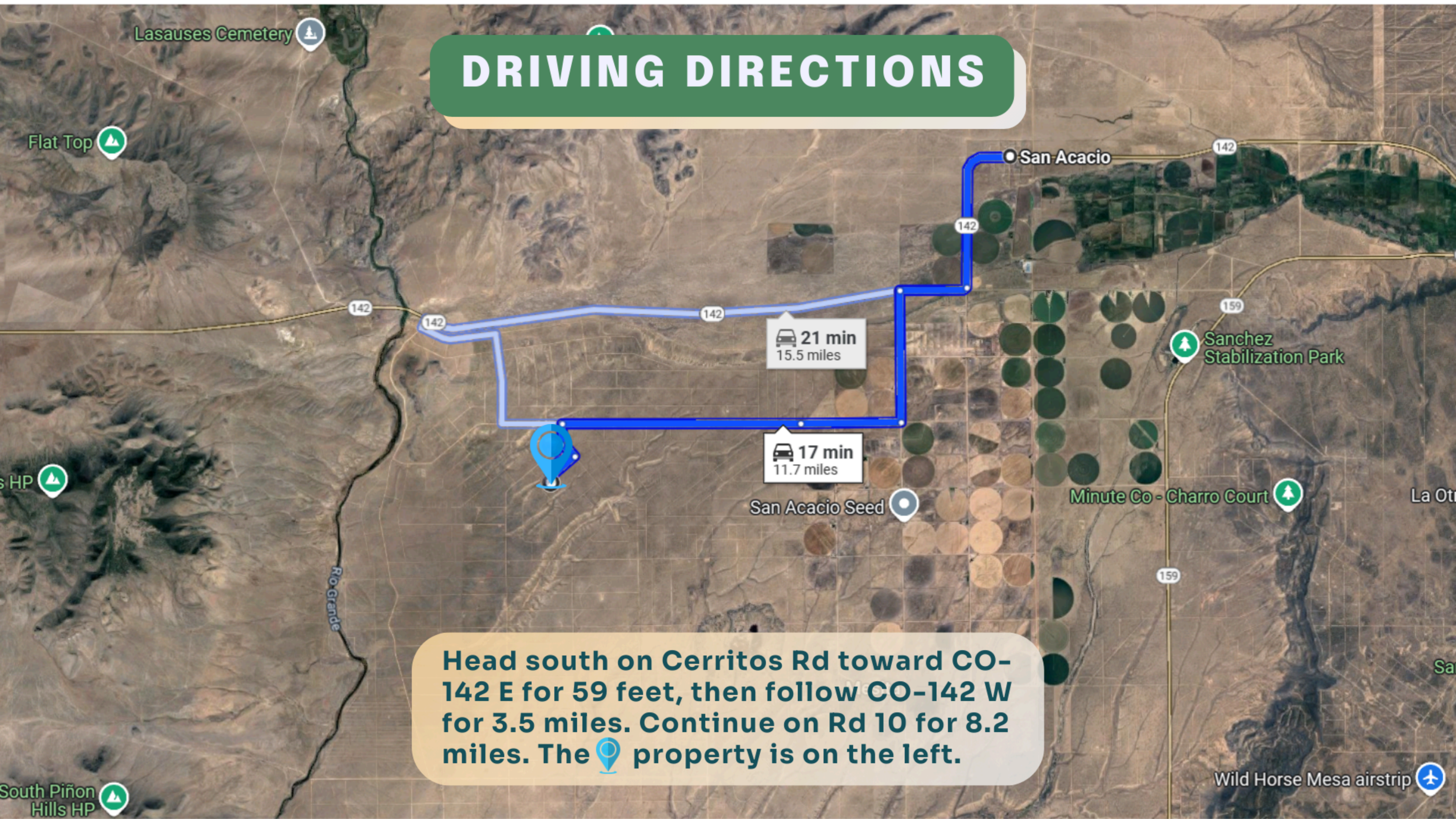


DRIVING DIRECTIONS

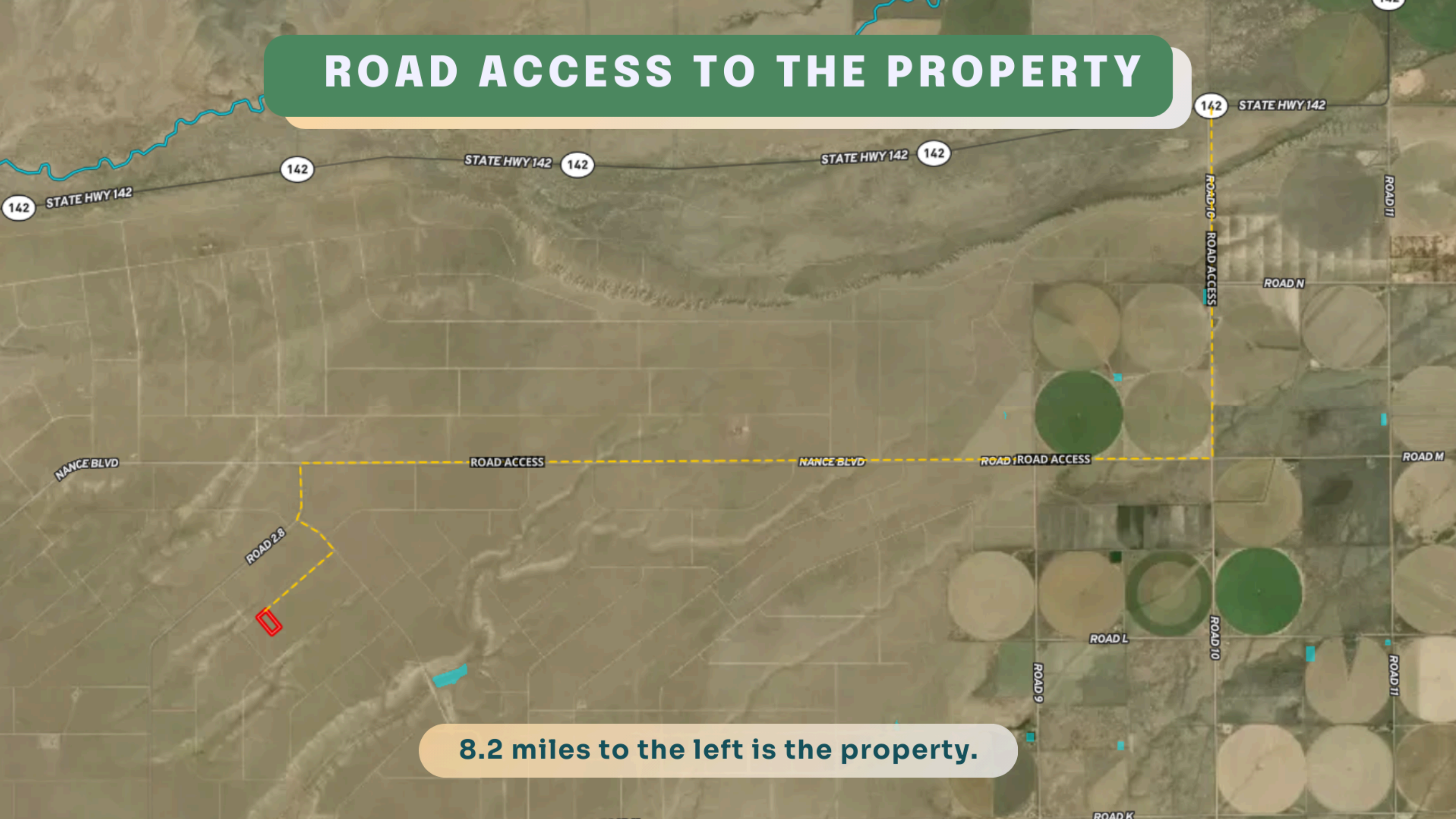
21 min
15.5 miles

17 min
11.7 miles

Head south on Cerritos Rd toward CO-142 E for 59 feet, then follow CO-142 W for 3.5 miles. Continue on Rd 10 for 8.2 miles. The  property is on the left.



ROAD ACCESS TO THE PROPERTY



8.2 miles to the left is the property.