

ABSOLUTE AUCTION



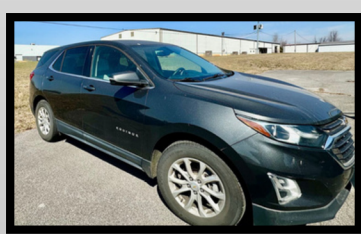
REAL ESTATE & PERSONAL PROPERTY



2 ACRES 11380 GREENVILLE RD. ELKTON, KY

Vehicles

- 2018 CHEVY EQUINOX
- 2002 BUICK LESABRE
- 2006 GMC SIERRA



Property Highlights

- UNRESTRICTED LOT
- 560 FEET OF ROAD FRONTAGE
- WATER AND ELECTRICITY ON SITE

BID ONLINE ONLY! APRIL 14TH - APRIL 24TH !

BolingerRealEstate.com



←
SCAN THIS
CODE FOR
AUCTION
DETAILS!

KELVIN DEBERRY
270-604-2536
270-632-8882



REAL ESTATE TERMS AND CONDITIONS: 10% BUYER'S PREMIUM, 10% DOWN PAYMENT AND CLOSING IN 30 DAYS. SELLING "AS IS, WHERE IS." SEE OUR WEBSITE AT BOLINGERREALESTATE.COM FOR FULL TERMS & CONDITIONS.

BEN BOLINGER, PRINCIPAL BROKER/AUCTIONEER

110 JOHN RIVES ROAD HOPKINSVILLE KY | 270.632.8882 | INFO@BOLINGERREALESTATE.COM