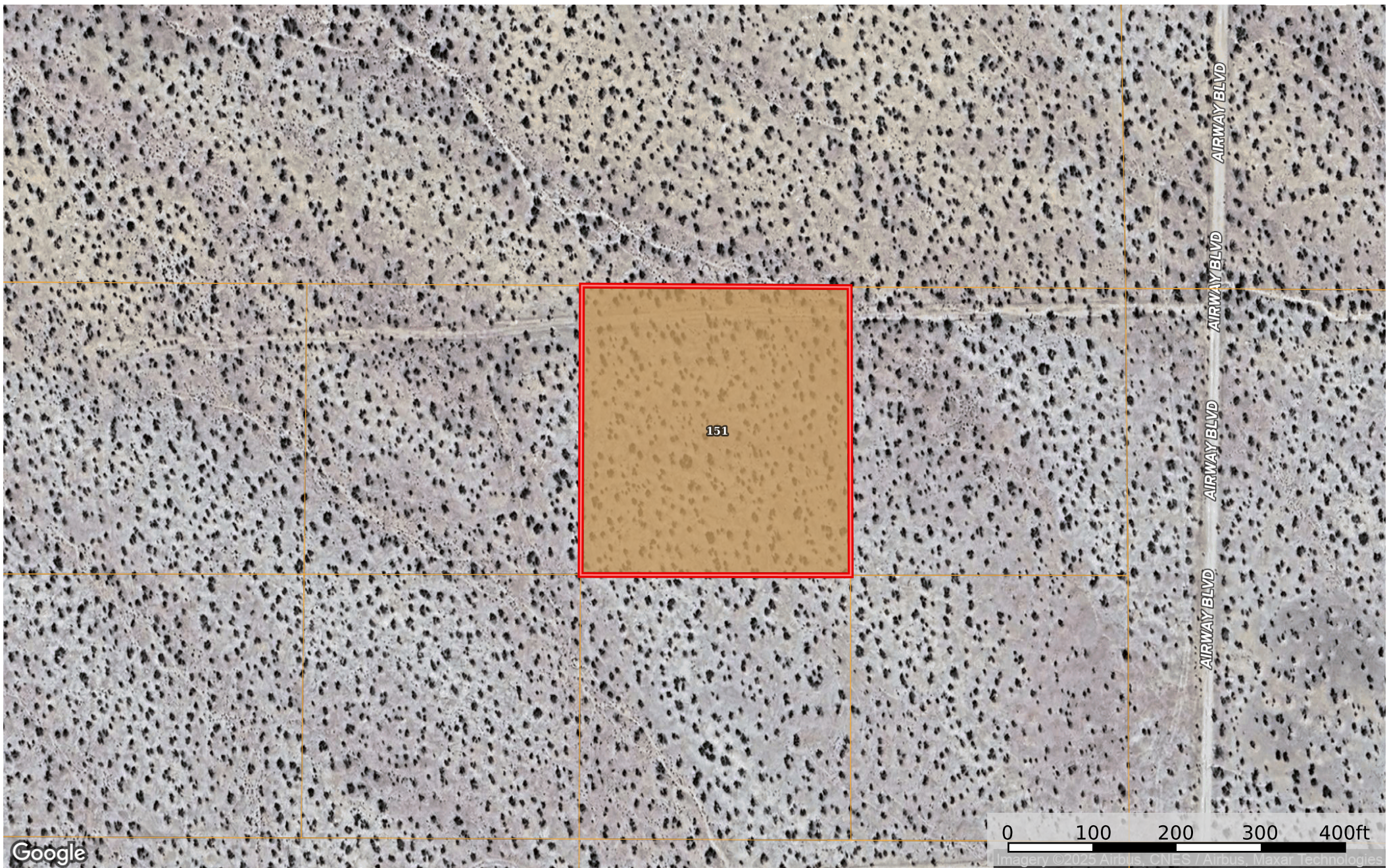


2.63 Acres California City, Kern County, CA 234-570-04-
Kern County, California, 2.63 AC +/-



 Boundary

 Boundary 2.51 ac

SOIL CODE	SOIL DESCRIPTION	ACRES	%	CPI	NCCPI	CAP
151	Muroc-Randsburg sandy loams, 5 to 9 percent slopes	2.51	100	0	3	7e
TOTALS		2.51(*)	100%	-	3.0	7

(*) Total acres may differ in the second decimal compared to the sum of each acreage soil. This is due to a round error because we only show the acres of each soil with two decimal.

