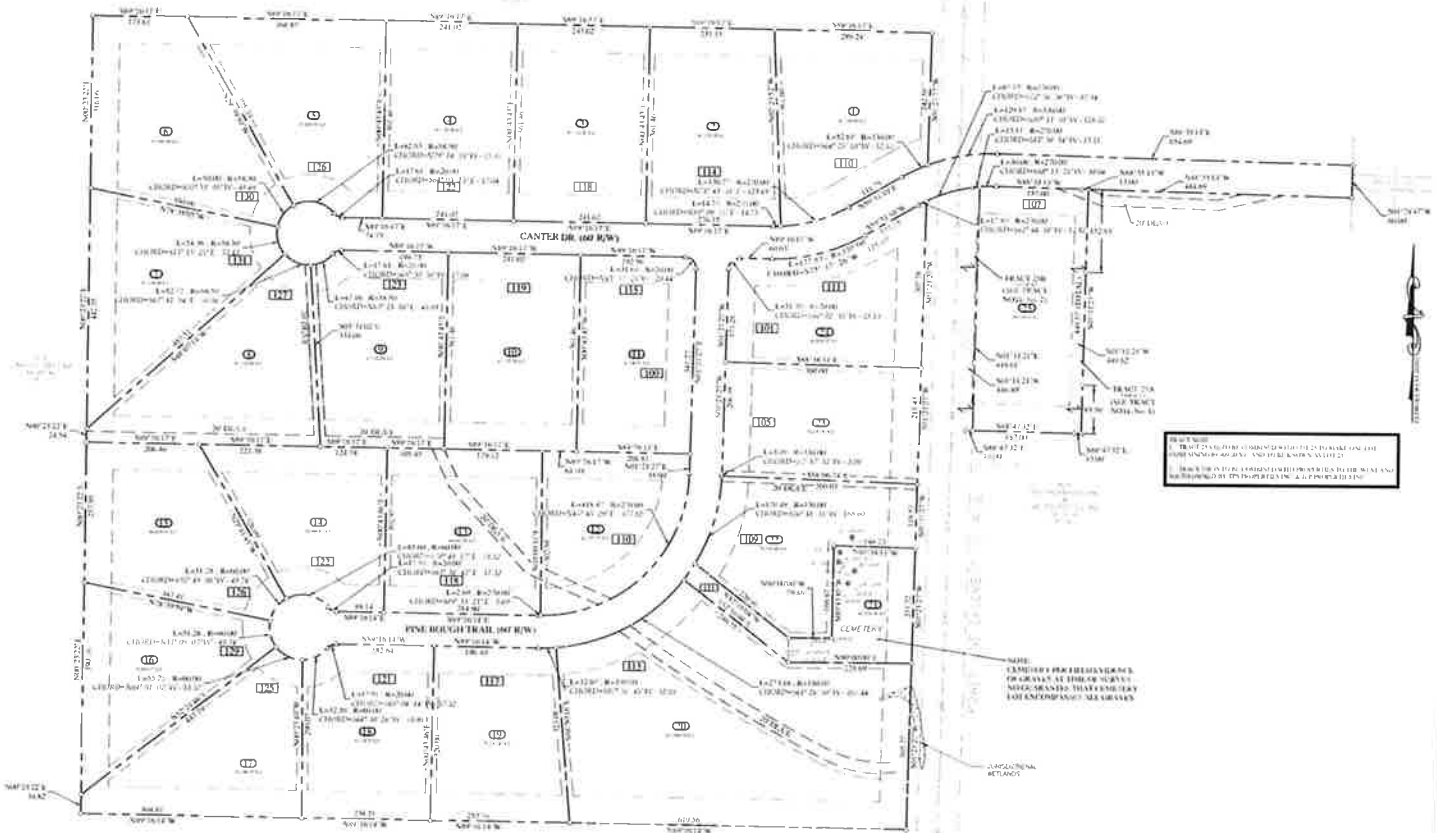


LEGEND

- 1.00 UNIMPROVED LOT
- 2.00 IMPROVED LOT
- 3.00 UNIMPROVED LOT WITH DRIVE
- 4.00 IMPROVED LOT WITH DRIVE
- 5.00 UNIMPROVED LOT WITH DRIVE AND SIDEWALK
- 6.00 IMPROVED LOT WITH DRIVE AND SIDEWALK
- 7.00 UNIMPROVED LOT WITH DRIVE AND SIDEWALK AND CURB
- 8.00 IMPROVED LOT WITH DRIVE AND SIDEWALK AND CURB
- 9.00 UNIMPROVED LOT WITH DRIVE AND SIDEWALK AND CURB AND SIDEWALK
- 10.00 IMPROVED LOT WITH DRIVE AND SIDEWALK AND CURB AND SIDEWALK
- 11.00 UNIMPROVED LOT WITH DRIVE AND SIDEWALK AND CURB AND SIDEWALK AND SIDEWALK
- 12.00 IMPROVED LOT WITH DRIVE AND SIDEWALK AND CURB AND SIDEWALK AND SIDEWALK
- 13.00 UNIMPROVED LOT WITH DRIVE AND SIDEWALK AND CURB AND SIDEWALK AND SIDEWALK AND SIDEWALK
- 14.00 IMPROVED LOT WITH DRIVE AND SIDEWALK AND CURB AND SIDEWALK AND SIDEWALK AND SIDEWALK
- 15.00 UNIMPROVED LOT WITH DRIVE AND SIDEWALK AND CURB AND SIDEWALK AND SIDEWALK AND SIDEWALK AND SIDEWALK
- 16.00 IMPROVED LOT WITH DRIVE AND SIDEWALK AND CURB AND SIDEWALK AND SIDEWALK AND SIDEWALK AND SIDEWALK
- 17.00 UNIMPROVED LOT WITH DRIVE AND SIDEWALK AND CURB AND SIDEWALK AND SIDEWALK AND SIDEWALK AND SIDEWALK AND SIDEWALK
- 18.00 IMPROVED LOT WITH DRIVE AND SIDEWALK AND CURB AND SIDEWALK AND SIDEWALK AND SIDEWALK AND SIDEWALK AND SIDEWALK
- 19.00 UNIMPROVED LOT WITH DRIVE AND SIDEWALK AND CURB AND SIDEWALK AND SIDEWALK AND SIDEWALK AND SIDEWALK AND SIDEWALK AND SIDEWALK
- 20.00 IMPROVED LOT WITH DRIVE AND SIDEWALK AND CURB AND SIDEWALK AND SIDEWALK AND SIDEWALK AND SIDEWALK AND SIDEWALK AND SIDEWALK

TOTAL AREA: 1,855,715.87 SQ. FT ACRES
42.60 ACRES



NOTES:
 1. THIS PLAN IS FOR THE PURPOSES OF THE CITY OF PEACH COUNTY, GEORGIA.
 2. THIS PLAN IS NOT TO BE CONSIDERED AS A GUARANTEE OF THE ACCURACY OF THE INFORMATION CONTAINED HEREIN.
 3. THE CITY OF PEACH COUNTY, GEORGIA, IS NOT RESPONSIBLE FOR ANY ERRORS OR OMISSIONS IN THIS PLAN.

NOTE:
 1. THIS PLAN IS FOR THE PURPOSES OF THE CITY OF PEACH COUNTY, GEORGIA.
 2. THIS PLAN IS NOT TO BE CONSIDERED AS A GUARANTEE OF THE ACCURACY OF THE INFORMATION CONTAINED HEREIN.
 3. THE CITY OF PEACH COUNTY, GEORGIA, IS NOT RESPONSIBLE FOR ANY ERRORS OR OMISSIONS IN THIS PLAN.

NOTES:
 1. THIS PLAN IS FOR THE PURPOSES OF THE CITY OF PEACH COUNTY, GEORGIA.
 2. THIS PLAN IS NOT TO BE CONSIDERED AS A GUARANTEE OF THE ACCURACY OF THE INFORMATION CONTAINED HEREIN.
 3. THE CITY OF PEACH COUNTY, GEORGIA, IS NOT RESPONSIBLE FOR ANY ERRORS OR OMISSIONS IN THIS PLAN.

NOTES:
 1. THIS PLAN IS FOR THE PURPOSES OF THE CITY OF PEACH COUNTY, GEORGIA.
 2. THIS PLAN IS NOT TO BE CONSIDERED AS A GUARANTEE OF THE ACCURACY OF THE INFORMATION CONTAINED HEREIN.
 3. THE CITY OF PEACH COUNTY, GEORGIA, IS NOT RESPONSIBLE FOR ANY ERRORS OR OMISSIONS IN THIS PLAN.

NOTES:
 1. THIS PLAN IS FOR THE PURPOSES OF THE CITY OF PEACH COUNTY, GEORGIA.
 2. THIS PLAN IS NOT TO BE CONSIDERED AS A GUARANTEE OF THE ACCURACY OF THE INFORMATION CONTAINED HEREIN.
 3. THE CITY OF PEACH COUNTY, GEORGIA, IS NOT RESPONSIBLE FOR ANY ERRORS OR OMISSIONS IN THIS PLAN.

NOTES:
 1. THIS PLAN IS FOR THE PURPOSES OF THE CITY OF PEACH COUNTY, GEORGIA.
 2. THIS PLAN IS NOT TO BE CONSIDERED AS A GUARANTEE OF THE ACCURACY OF THE INFORMATION CONTAINED HEREIN.
 3. THE CITY OF PEACH COUNTY, GEORGIA, IS NOT RESPONSIBLE FOR ANY ERRORS OR OMISSIONS IN THIS PLAN.

NOTES:
 1. THIS PLAN IS FOR THE PURPOSES OF THE CITY OF PEACH COUNTY, GEORGIA.
 2. THIS PLAN IS NOT TO BE CONSIDERED AS A GUARANTEE OF THE ACCURACY OF THE INFORMATION CONTAINED HEREIN.
 3. THE CITY OF PEACH COUNTY, GEORGIA, IS NOT RESPONSIBLE FOR ANY ERRORS OR OMISSIONS IN THIS PLAN.

PLAT Doc. PLAT
 Recorded 08/12/2019 12:08PM
 JOE WILDER, Clerk Superior Court
 Peach County, Ga
 Bx 00229 Pg. 0011
 Participants: 05/01/2019

M. McMill
 M. McMill

M. McMill
 M. McMill

Bryan Wood



960 Ball Street
 Peach County, GA 31206
 (706) 478-1242
 WWW.MCLEODSURVEYING.COM

McLeod
 SURVEYING

CLIENT	PROJECT
DATE	DATE
BY	BY
CHECKED	CHECKED

THE FARM PHASE 2
 GEORGIA

FINAL PLAT FOR
 PERRY

S-1.1