

TAX RATE AREA

60-029

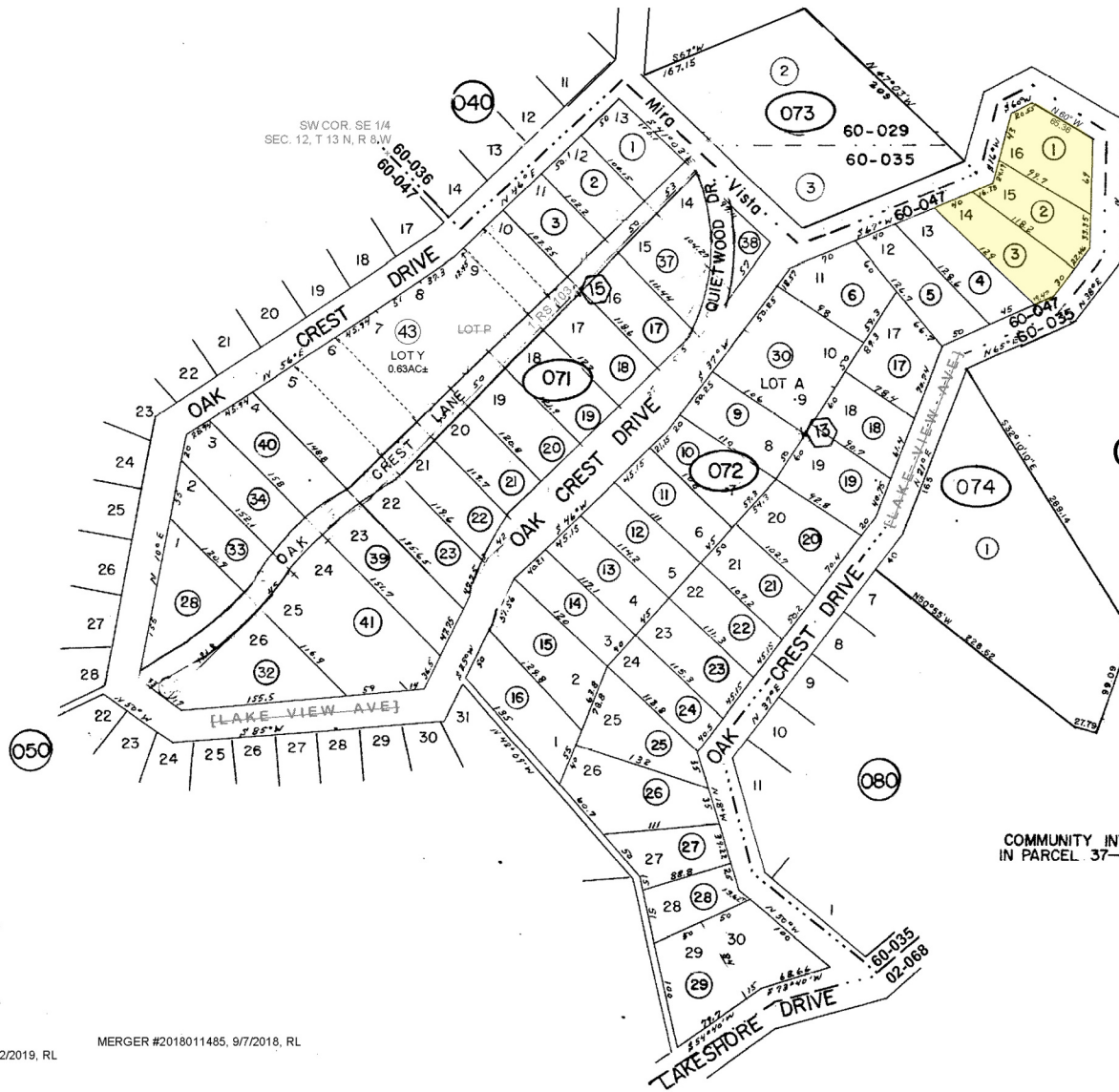
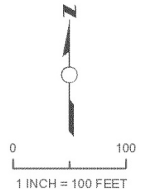
60-035

60-047

037-070

POR SECS 12 & 13, T 13 N, R 9 W

MT. DIABLO BASELINE & MERIDIAN



# CLEAR LAKE PARK NO. 3

3 TM 36/40

THIS MAP WAS PREPARED FOR  
ASSESSMENT PURPOSES ONLY.  
NO LIABILITY IS ASSUMED FOR  
THE ACCURACY OF THE DATA  
DELINEATED HEREON.

RICHARD A FORD  
ASSESSOR-RECORDER  
LAKE COUNTY, CALIFORNIA

COMMUNITY INTEREST  
IN PARCEL 37—124—12