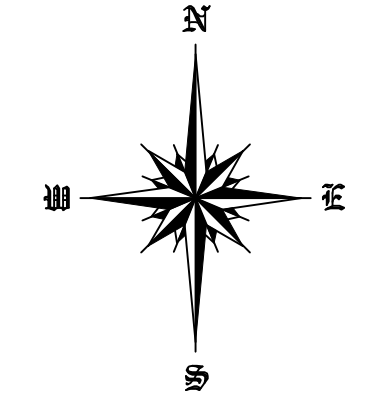
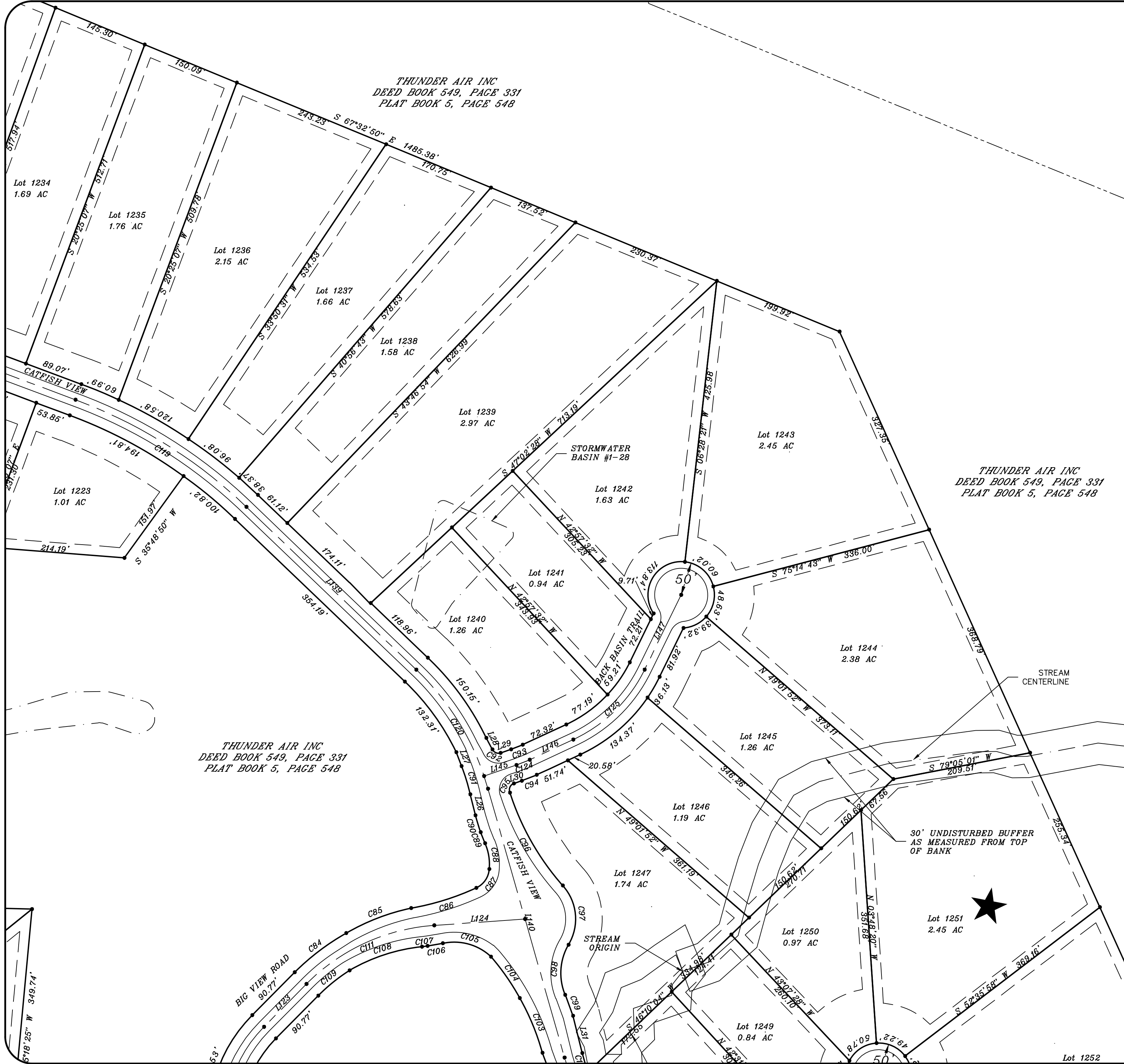


River Gorge Ranch Subdivision  
Phase One  
A Mountain Top Community  
Sheet 27



Plat North: Tennessee State Plane (1983)  
0 100 200 300



<b>River Gorge Ranch Phase 1 Final Plat</b>	
Deed Book 549, Page 331 (R.O.M.C.) Tax Map 146 Parcel 1.00	
Scale: 1" = 100'	Drawn By: JDE
Date: 02/26/2022	Approved By: JDE
Fourth Civil District	
Marion County, Tennessee	Drawing No: 22-0018