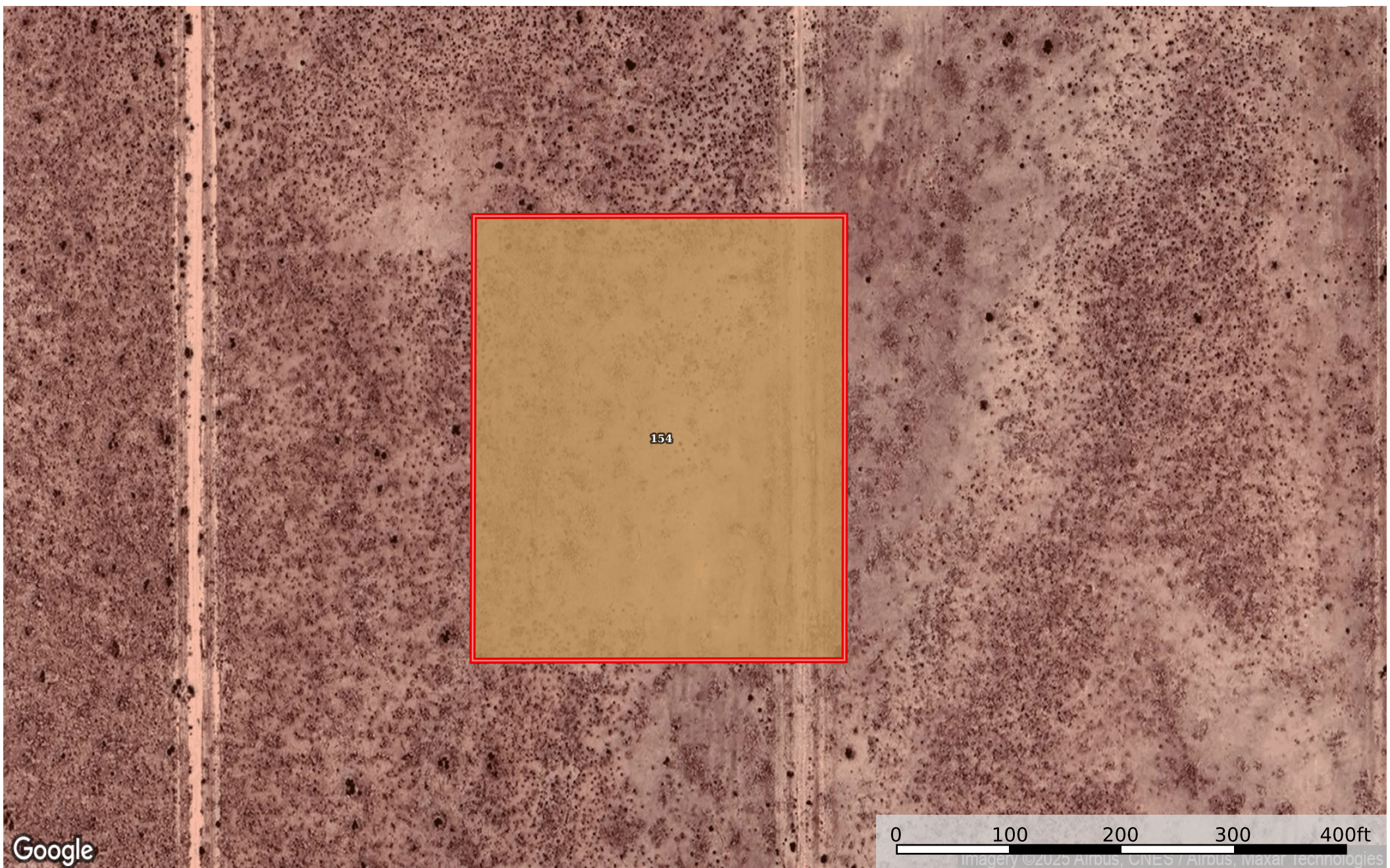


2.51 Acres Edwards, Kern County, CA 351-362-07-00-9  
Kern County, California, 2.51 AC +/-



-  Boundary
-  100 Year Floodplain
-  500 Year Floodplain
-  Floodway
-  Special
-  Unmapped/ Not Included
-  Wetlands
-  Riparian

Boundary 2.53 ac

SOIL CODE	SOIL DESCRIPTION	ACRES	%	CPI	NCCPI	CAP
154	Neuralia sandy loam, 2 to 5 percent slopes	2.53	100	0	7	7e
TOTALS		2.53(*)	100%	-	7.0	7

(\*) Total acres may differ in the second decimal compared to the sum of each acreage soil. This is due to a round error because we only show the acres of each soil with two decimal.

