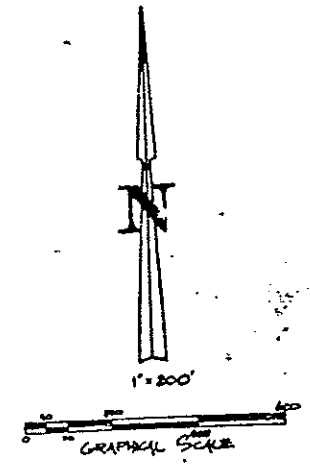


# THE TRAILS

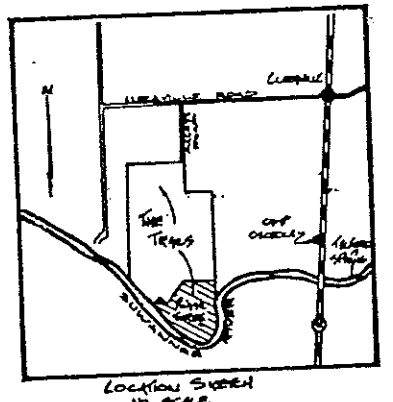
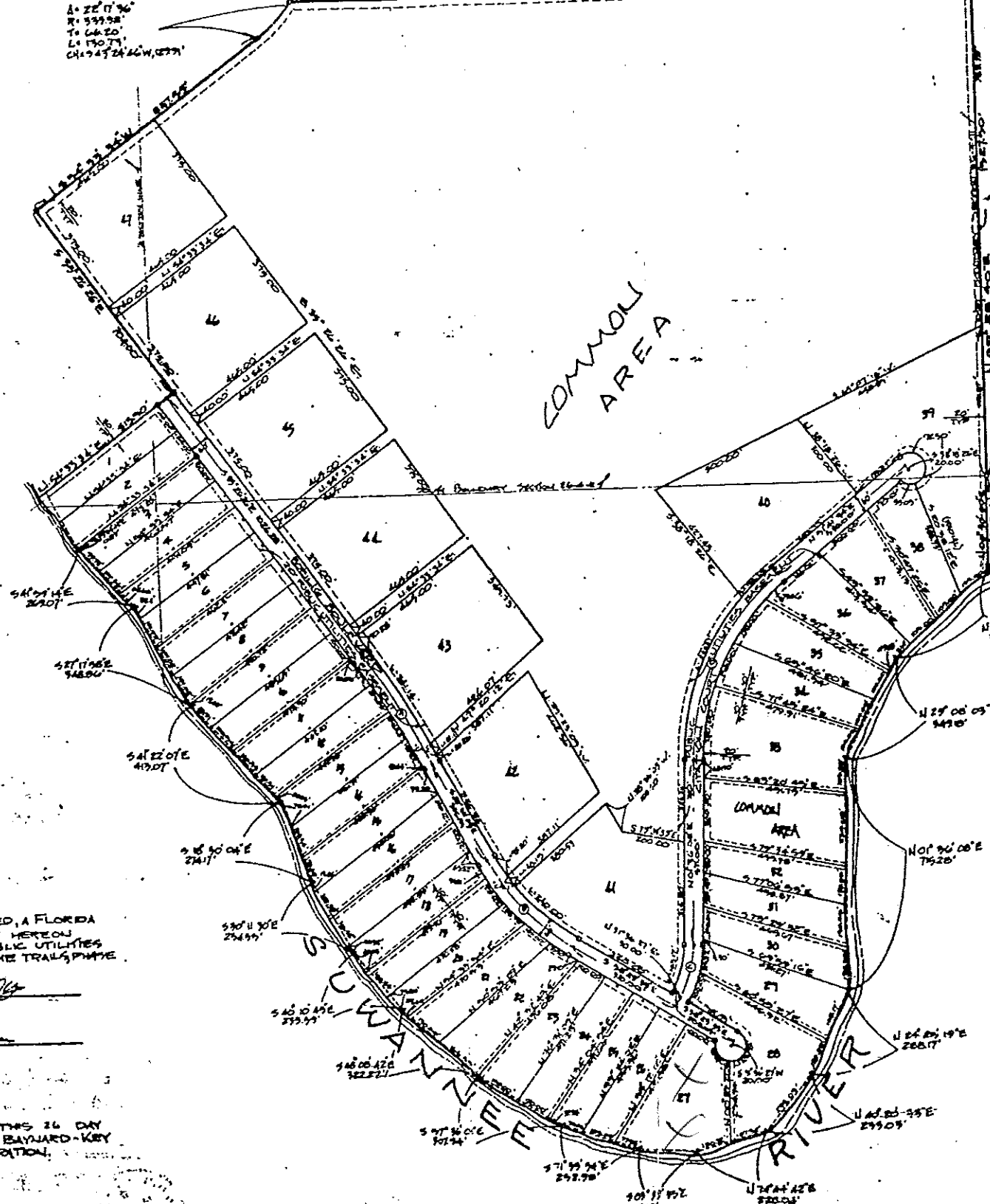
PHASE THREE  
A SUBDIVISION IN SECTIONS 26 & 35  
TOWNSHIP 4 SOUTH, RANGE 11 EAST  
SUWANNEE COUNTY, FLORIDA



- PERM
- R.O.P.
- EASEMENT
- PUBLIC UTILITIES BASEMENTS

CURVE #	DELTA	RADIUS	TANGENT	LENGTH	CHORD & BEARING
A	00° 50' 27"	7346.77'	200.00'	739.77'	5372.01' W 81° 57' 33"
B	27° 47' 30"	7346.77'	200.00'	739.77'	5372.01' W 81° 57' 33"
C	50° 00' 18"	7346.77'	200.00'	739.77'	5372.01' W 81° 57' 33"
D	70° 04' 22"	7346.77'	200.00'	739.77'	5372.01' W 81° 57' 33"

LOT #	DELTA	RADIUS	TANGENT	LENGTH	CHORD & BEARING
11	00° 50' 27"	7346.77'	200.00'	739.77'	5372.01' W 81° 57' 33"
12	01° 43' 43"	7346.77'	200.00'	739.77'	5372.01' W 81° 57' 33"
13	02° 43' 43"	7346.77'	200.00'	739.77'	5372.01' W 81° 57' 33"
14	03° 43' 43"	7346.77'	200.00'	739.77'	5372.01' W 81° 57' 33"
15	04° 43' 43"	7346.77'	200.00'	739.77'	5372.01' W 81° 57' 33"
16	05° 43' 43"	7346.77'	200.00'	739.77'	5372.01' W 81° 57' 33"
17	06° 43' 43"	7346.77'	200.00'	739.77'	5372.01' W 81° 57' 33"
18	07° 43' 43"	7346.77'	200.00'	739.77'	5372.01' W 81° 57' 33"
19	08° 43' 43"	7346.77'	200.00'	739.77'	5372.01' W 81° 57' 33"
20	09° 43' 43"	7346.77'	200.00'	739.77'	5372.01' W 81° 57' 33"
21	10° 43' 43"	7346.77'	200.00'	739.77'	5372.01' W 81° 57' 33"
22	11° 43' 43"	7346.77'	200.00'	739.77'	5372.01' W 81° 57' 33"
23	12° 43' 43"	7346.77'	200.00'	739.77'	5372.01' W 81° 57' 33"
24	13° 43' 43"	7346.77'	200.00'	739.77'	5372.01' W 81° 57' 33"
25	14° 43' 43"	7346.77'	200.00'	739.77'	5372.01' W 81° 57' 33"
26	15° 43' 43"	7346.77'	200.00'	739.77'	5372.01' W 81° 57' 33"
27	16° 43' 43"	7346.77'	200.00'	739.77'	5372.01' W 81° 57' 33"
28	17° 43' 43"	7346.77'	200.00'	739.77'	5372.01' W 81° 57' 33"
29	18° 43' 43"	7346.77'	200.00'	739.77'	5372.01' W 81° 57' 33"
30	19° 43' 43"	7346.77'	200.00'	739.77'	5372.01' W 81° 57' 33"
31	20° 43' 43"	7346.77'	200.00'	739.77'	5372.01' W 81° 57' 33"
32	21° 43' 43"	7346.77'	200.00'	739.77'	5372.01' W 81° 57' 33"
33	22° 43' 43"	7346.77'	200.00'	739.77'	5372.01' W 81° 57' 33"
34	23° 43' 43"	7346.77'	200.00'	739.77'	5372.01' W 81° 57' 33"
35	24° 43' 43"	7346.77'	200.00'	739.77'	5372.01' W 81° 57' 33"
36	25° 43' 43"	7346.77'	200.00'	739.77'	5372.01' W 81° 57' 33"
37	26° 43' 43"	7346.77'	200.00'	739.77'	5372.01' W 81° 57' 33"
38	27° 43' 43"	7346.77'	200.00'	739.77'	5372.01' W 81° 57' 33"
39	28° 43' 43"	7346.77'	200.00'	739.77'	5372.01' W 81° 57' 33"
40	29° 43' 43"	7346.77'	200.00'	739.77'	5372.01' W 81° 57' 33"
41	30° 43' 43"	7346.77'	200.00'	739.77'	5372.01' W 81° 57' 33"
42	31° 43' 43"	7346.77'	200.00'	739.77'	5372.01' W 81° 57' 33"
43	32° 43' 43"	7346.77'	200.00'	739.77'	5372.01' W 81° 57' 33"
44	33° 43' 43"	7346.77'	200.00'	739.77'	5372.01' W 81° 57' 33"
45	34° 43' 43"	7346.77'	200.00'	739.77'	5372.01' W 81° 57' 33"
46	35° 43' 43"	7346.77'	200.00'	739.77'	5372.01' W 81° 57' 33"
47	36° 43' 43"	7346.77'	200.00'	739.77'	5372.01' W 81° 57' 33"
48	37° 43' 43"	7346.77'	200.00'	739.77'	5372.01' W 81° 57' 33"
49	38° 43' 43"	7346.77'	200.00'	739.77'	5372.01' W 81° 57' 33"
50	39° 43' 43"	7346.77'	200.00'	739.77'	5372.01' W 81° 57' 33"
51	40° 43' 43"	7346.77'	200.00'	739.77'	5372.01' W 81° 57' 33"
52	41° 43' 43"	7346.77'	200.00'	739.77'	5372.01' W 81° 57' 33"
53	42° 43' 43"	7346.77'	200.00'	739.77'	5372.01' W 81° 57' 33"
54	43° 43' 43"	7346.77'	200.00'	739.77'	5372.01' W 81° 57' 33"
55	44° 43' 43"	7346.77'	200.00'	739.77'	5372.01' W 81° 57' 33"
56	45° 43' 43"	7346.77'	200.00'	739.77'	5372.01' W 81° 57' 33"
57	46° 43' 43"	7346.77'	200.00'	739.77'	5372.01' W 81° 57' 33"
58	47° 43' 43"	7346.77'	200.00'	739.77'	5372.01' W 81° 57' 33"
59	48° 43' 43"	7346.77'	200.00'	739.77'	5372.01' W 81° 57' 33"
60	49° 43' 43"	7346.77'	200.00'	739.77'	5372.01' W 81° 57' 33"
61	50° 43' 43"	7346.77'	200.00'	739.77'	5372.01' W 81° 57' 33"
62	51° 43' 43"	7346.77'	200.00'	739.77'	5372.01' W 81° 57' 33"
63	52° 43' 43"	7346.77'	200.00'	739.77'	5372.01' W 81° 57' 33"
64	53° 43' 43"	7346.77'	200.00'	739.77'	5372.01' W 81° 57' 33"
65	54° 43' 43"	7346.77'	200.00'	739.77'	5372.01' W 81° 57' 33"
66	55° 43' 43"	7346.77'	200.00'	739.77'	5372.01' W 81° 57' 33"
67	56° 43' 43"	7346.77'	200.00'	739.77'	5372.01' W 81° 57' 33"
68	57° 43' 43"	7346.77'	200.00'	739.77'	5372.01' W 81° 57' 33"
69	58° 43' 43"	7346.77'	200.00'	739.77'	5372.01' W 81° 57' 33"
70	59° 43' 43"	7346.77'	200.00'	739.77'	5372.01' W 81° 57' 33"
71	60° 43' 43"	7346.77'	200.00'	739.77'	5372.01' W 81° 57' 33"
72	61° 43' 43"	7346.77'	200.00'	739.77'	5372.01' W 81° 57' 33"
73	62° 43' 43"	7346.77'	200.00'	739.77'	5372.01' W 81° 57' 33"
74	63° 43' 43"	7346.77'	200.00'	739.77'	5372.01' W 81° 57' 33"
75	64° 43' 43"	7346.77'	200.00'	739.77'	5372.01' W 81° 57' 33"
76	65° 43' 43"	7346.77'	200.00'	739.77'	5372.01' W 81° 57' 33"
77	66° 43' 43"	7346.77'	200.00'	739.77'	5372.01' W 81° 57' 33"
78	67° 43' 43"	7346.77'	200.00'	739.77'	5372.01' W 81° 57' 33"
79	68° 43' 43"	7346.77'	200.00'	739.77'	5372.01' W 81° 57' 33"
80	69° 43' 43"	7346.77'	200.00'	739.77'	5372.01' W 81° 57' 33"
81	70° 43' 43"	7346.77'	200.00'	739.77'	5372.01' W 81° 57' 33"
82	71° 43' 43"	7346.77'	200.00'	739.77'	5372.01' W 81° 57' 33"
83	72° 43' 43"	7346.77'	200.00'	739.77'	5372.01' W 81° 57' 33"
84	73° 43' 43"	7346.77'	200.00'	739.77'	5372.01' W 81° 57' 33"
85	74° 43' 43"	7346.77'	200.00'	739.77'	5372.01' W 81° 57' 33"
86	75° 43' 43"	7346.77'	200.00'	739.77'	5372.01' W 81° 57' 33"
87	76° 43' 43"	7346.77'	200.00'	739.77'	5372.01' W 81° 57' 33"
88	77° 43' 43"	7346.77'	200.00'	739.77'	5372.01' W 81° 57' 33"
89	78° 43' 43"	7346.77'	200.00'	739.77'	5372.01' W 81° 57' 33"
90	79° 43' 43"	7346.77'	200.00'	739.77'	5372.01' W 81° 57' 33"
91	80° 43' 43"	7346.77'	200.00'	739.77'	5372.01' W 81° 57' 33"
92	81° 43' 43"	7346.77'	200.00'	739.77'	5372.01' W 81° 57' 33"
93	82° 43' 43"	7346.77'	200.00'	739.77'	5372.01' W 81° 57' 33"
94	83° 43' 43"	7346.77'	200.00'	739.77'	5372.01' W 81° 57' 33"
95	84° 43' 43"	7346.77'	200.00'	739.77'	5372.01' W 81° 57' 33"
96	85° 43' 43"	7346.77'	200.00'	739.77'	5372.01' W 81° 57' 33"
97	86° 43' 43"	7346.77'	200.00'	739.77'	5372.01' W 81° 57' 33"
98	87° 43' 43"	7346.77'	200.00'	739.77'	5372.01' W 81° 57' 33"
99	88° 43' 43"	7346.77'	200.00'	739.77'	5372.01' W 81° 57' 33"
100	89° 43' 43"	7346.77'	200.00'	739.77'	5372.01' W 81° 57' 33"
101	90° 43' 43"	7346.77'	200.00'	739.77'	5372.01' W 81° 57' 33"
102	91° 43' 43"	7346.77'	200.00'	739.77'	5372.01' W 81° 57' 33"
103	92° 43' 43"	7346.77'	200.00'	739.77'	5372.01' W 81° 57' 33"
104	93° 43' 43"	7346.77'	200.00'	739.77'	5372.01' W 81° 57' 33"
105	94° 43' 43"	7346.77'	200.00'	739.77'	5372.01' W 81° 57' 33"
106	95° 43' 43"	7346.77'	200.00'	739.77'	5372.01' W 81° 57' 33"
107	96° 43' 43"	7346.77'	200.00'	739.77'	5372.01' W 81° 57' 33"
108	97° 43' 43"	7346.77'	200.00'	739.77'	5372.01' W 81° 57' 33"
109	98° 43' 43"	7346.77'	200.00'	739.77'	5372.01' W 81° 57' 33"
110	99° 43' 43"	7346.77'	200.00'	739.77'	5372.01' W 81° 57' 33"
111	100° 43' 43"	7346.77'	200.00'	739.77'	5372.01' W 81° 57' 33"



**LEGAL DESCRIPTION**  
A PORTION OF LAND IN SECTIONS 26 AND 35, TOWNSHIP 4 SOUTH, RANGE 11 EAST, SUWANNEE COUNTY, FLORIDA AND BEING MORE PARTICULARLY DESCRIBED AS FOLLOWS:  
BEGIN AT THE SE CORNER OF SAID SECTION 26 AND RUN THENCE N00° 28' 40" E ALONG THE EAST BOUNDARY OF SAID SECTION 26, 2017.08 FEET; THENCE WEST N87° 47' 3" W 100.00 FEET TO A POINT 100 FEET WEST OF SAID EAST BOUNDARY; THENCE S00° 28' 40" W TO AND 100 FEET WEST OF SAID EAST BOUNDARY, 1089.58 FEET; THENCE N87° 47' 3" W, 2017.17 FEET TO A POINT ON A CURVE CONCAVE NORTHWESTERLY AND HAVING A RADIUS OF 399.98 FEET; THENCE SOUTHWESTERLY ALONG THE ARC OF SAID CURVE THROUGH A CENTRAL ANGLE OF 22° 17' 30" AN ARC DISTANCE OF 1907.3 FEET, SAID ARC BEING SUBSTANTIATED BY A CHORD HAVING A BEARING AND DISTANCE OF S43° 24' 42" W, 1299.1 FEET; THENCE S54° 33' 34" W, 851.55 FEET; THENCE S 93° 20' 20" E, 704.00 FEET; THENCE S 54° 33' 34" W, 60.00 FEET; THENCE S 77° 20' 20" E, 200.00 FEET; THENCE S 54° 33' 34" W, 174.05 FEET; MORE OR LESS, TO THE WATER'S EDGE OF THE SUWANNEE RIVER; THENCE SOUTHEASTERLY, EASTERLY, NORTHEASTERLY, NORTHERLY AND NORTHEASTERLY ALONG SAID WATER'S EDGE 500 FEET, MORE OR LESS, TO THE INTERSECTION OF THE EAST BOUNDARY OF SAID SECTION 35; THENCE N00° 30' 00" E ALONG SAID EAST BOUNDARY OF SECTION 35 1.34 FEET TO THE POINT OF BEGINNING.

**SUWANNEE COUNTY COMMISSIONER'S APPROVAL**  
APPROVED BY THE BOARD OF COMMISSIONERS OF SUWANNEE COUNTY, FLORIDA THIS 17 DAY OF MARCH AD 1981  
*David C. Ross* CHAIRMAN  
*Edna Bennett* DEPUTY CLERK

**SUWANNEE COUNTY CLERK'S FILING CERTIFICATE**  
THIS PLAT HAS BEEN FILED FOR RECORD AND RECORDED IN THE PUBLIC RECORDS OF SUWANNEE COUNTY, FLORIDA, THIS 26 DAY OF MARCH AD 1981  
*Michael S. Johnson* CLERK  
*Michael S. Johnson* DEPUTY CLERK

**SURVEYOR'S CERTIFICATE**  
I DO HEREBY CERTIFY THAT THIS PLAT OF THE TRAILS, PHASE THREE, IS A TRUE AND CORRECT REPRESENTATION OF THE HEREON DESCRIBED LANDS ACCORDING TO A SURVEY MADE UNDER MY RESPONSIBLE DIRECTION AND SUPERVISION AND THAT PERMANENT REFERENCE MONUMENTS (PERM) AND PERMANENT CONTROL POINTS (R.C.P.) HAVE BEEN SET AS CALLED FOR UNDER CHAPTER 177, SECTION 0091 (760), LAWS OF FLORIDA, AND THAT THE SURVEY DATA COMPLES WITH ALL THE REQUIREMENTS OF CHAPTER 177 (FLORIDA STATUTES) 1980  
*Wayne C. ...* STATE OF FLORIDA PROFESSIONAL LAND SURVEYOR, REGISTRATION NO. 1808  
*Michael S. Johnson* CLERK

**ADOPTION AND DEDICATION**  
KNOW ALL MEN BY THESE PRESENTS THAT BAYNARD-KEY INCORPORATED, A FLORIDA CORPORATION DOES HEREBY CERTIFY THAT IT IS THE OWNER OF THE HEREON DESCRIBED PROPERTY AND AS OWNER DO HEREBY GRANT TO ALL PUBLIC UTILITIES COMPANIES FOREVER THE EASEMENTS SHOWN ON THIS PLAT OF THE TRAILS, PHASE THREE.  
*Richard G. Key, Jr.* PRESIDENT  
*David C. Ross* WITNESS  
*Edna Bennett* WITNESS

**ACKNOWLEDGEMENT**  
STATE OF FLORIDA, COUNTY OF SUWANNEE  
THE FOREGOING INSTRUMENT WAS ACKNOWLEDGED BEFORE ME THIS 26 DAY OF MARCH AD 1981 BY RICHARD G. KEY, JR., PRESIDENT OF BAYNARD-KEY INCORPORATED, A FLORIDA CORPORATION, ON BEHALF OF THE CORPORATION.  
*James A. ...* NOTARY PUBLIC, STATE OF FLORIDA  
11-7-83 BY COMMISSION EXPIRES