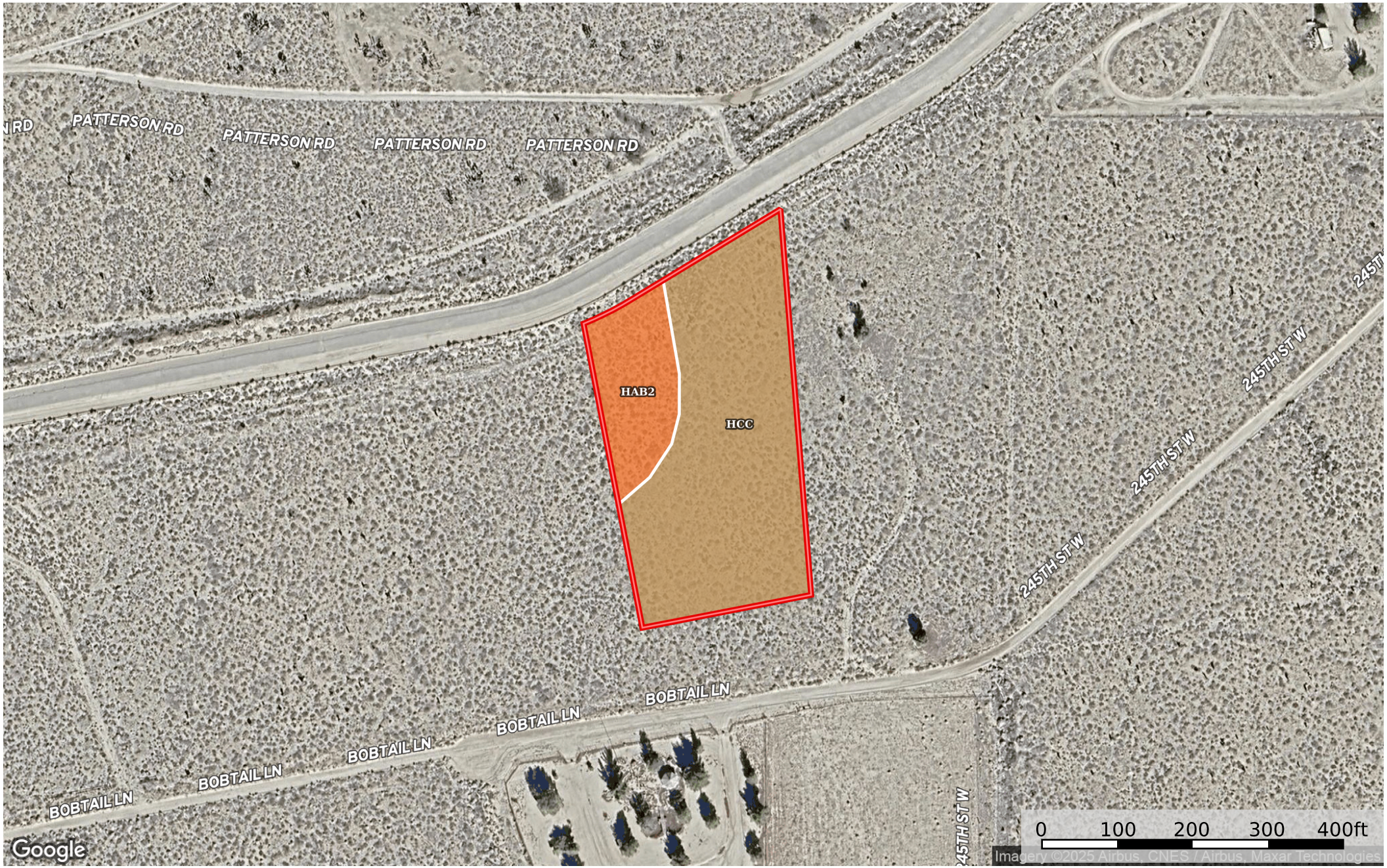


2.65 Acres Rosamond, Kern County, CA 254-201-16-00-3  
Kern County, California, 2.65 AC +/-



Google

Imagery ©2025 Airbus, CNES / Airbus, Maxar Technologies

Boundary

 Boundary 2.65 ac

SOIL CODE	SOIL DESCRIPTION	ACRES	%	CPI	NCCPI	CAP
HcC	Hanford sandy loam, 2 to 9 percent slopes	2.1	79.25	0	19	4e
HaB2	Hanford loamy sand, 2 to 5 percent slopes, hummocky	0.55	20.75	0	17	4e
TOTALS		2.65(*)	100%	-	18.58	4.0

(\*) Total acres may differ in the second decimal compared to the sum of each acreage soil. This is due to a round error because we only show the acres of each soil with two decimal.

