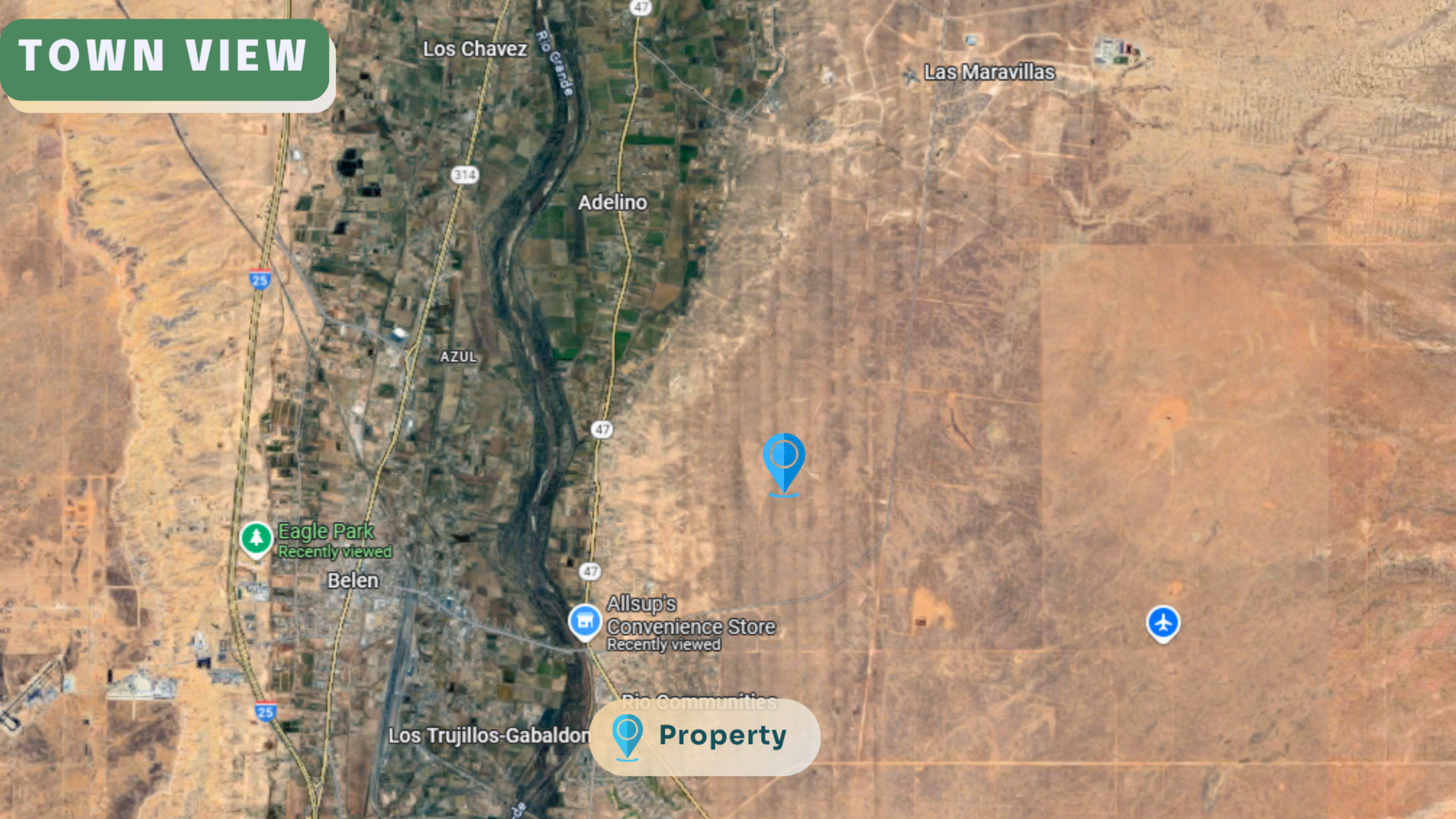


# TOWN VIEW



Eagle Park  
Recently viewed

Belen

Allsup's  
Convenience Store  
Recently viewed

Rio Communities  
**Property**

Los Trujillos-Gabaldon

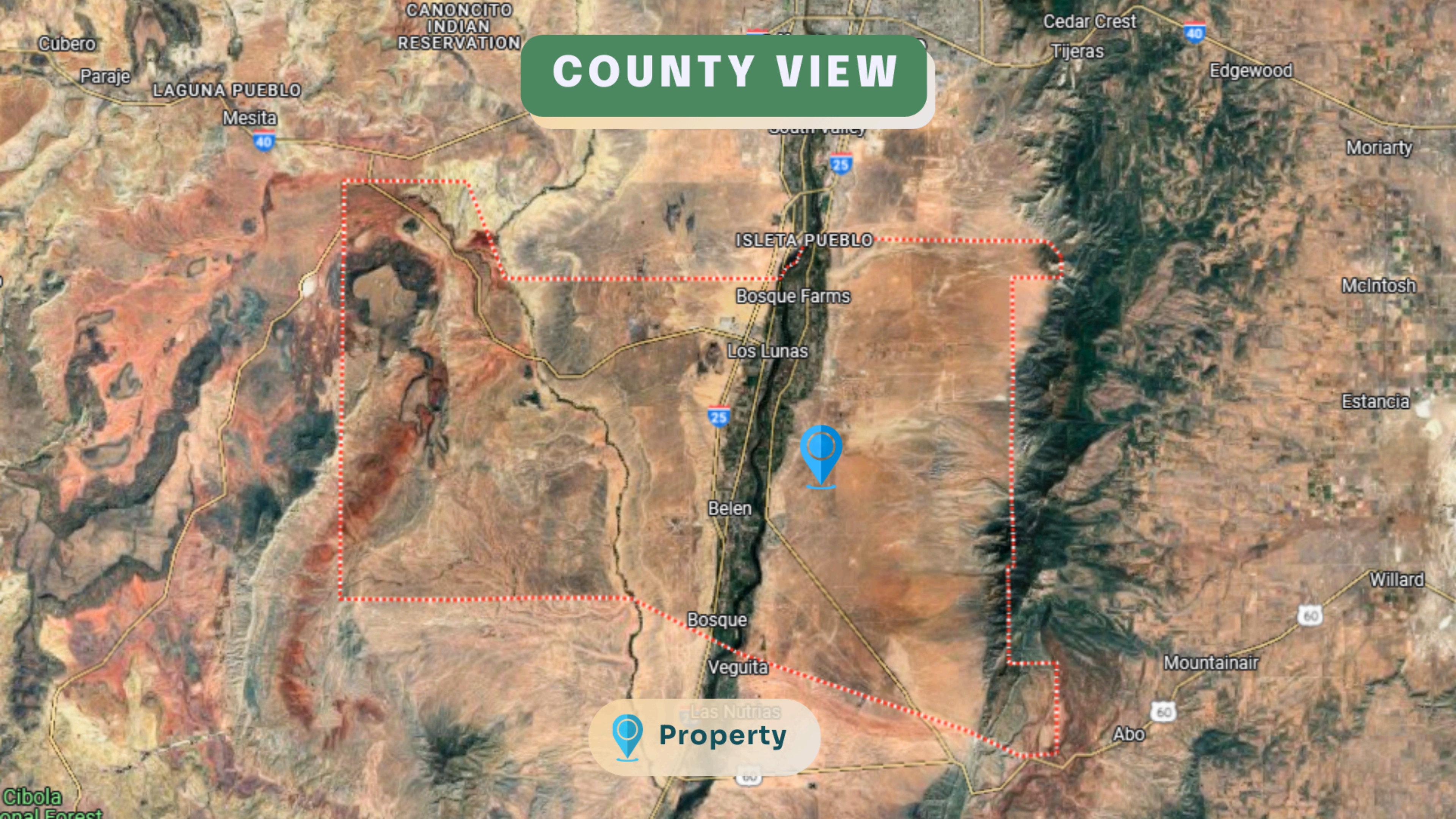
Los Chavez

Adelino

Las Maravillas

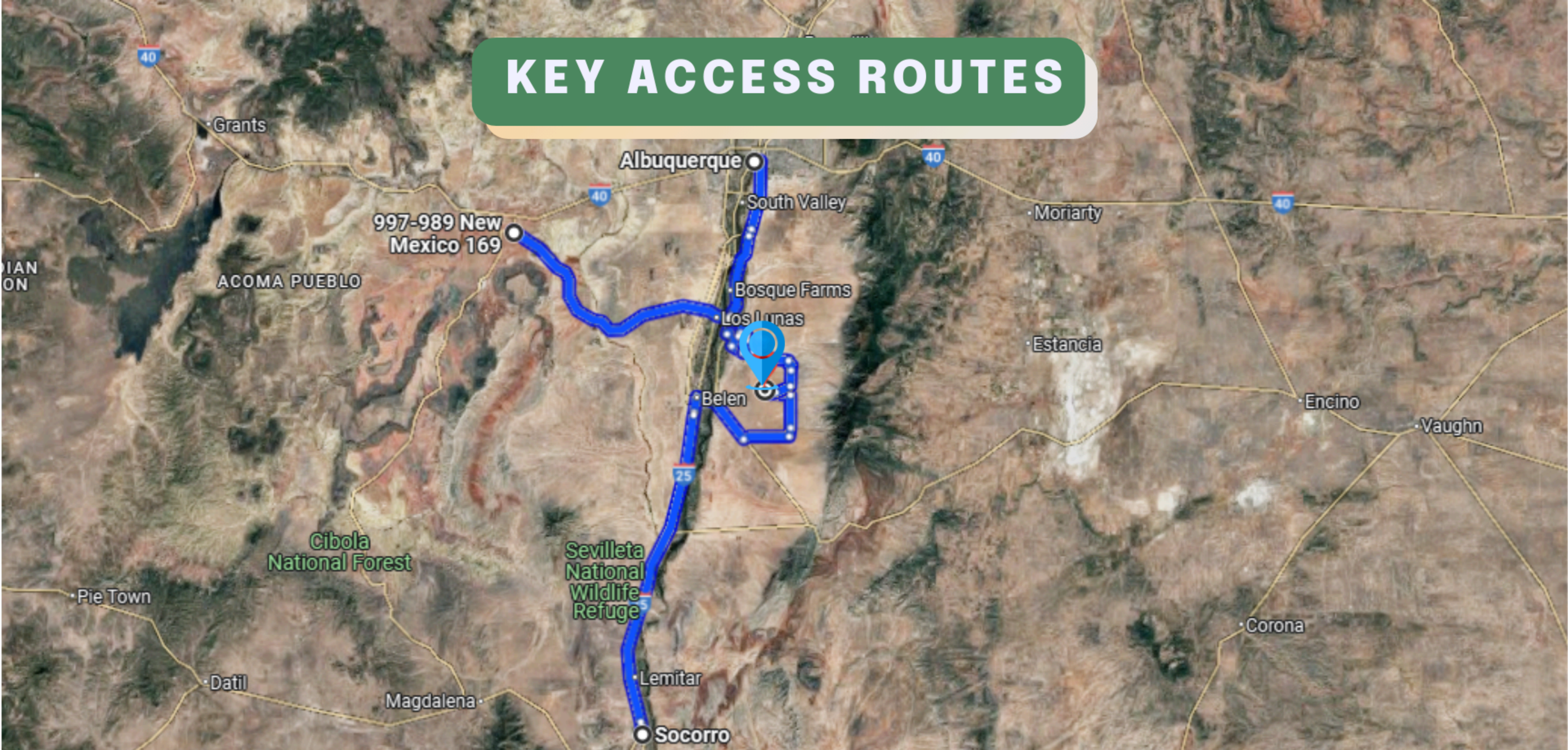
AZUL

# COUNTY VIEW



Las Nutrias  
**Property**

# KEY ACCESS ROUTES



The  property is located on De Han Loop, with convenient access from CanAm Hwy, I-25, and NM-6 W, making it highly accessible.


# ROAD ACCESS TO THE PROPERTY




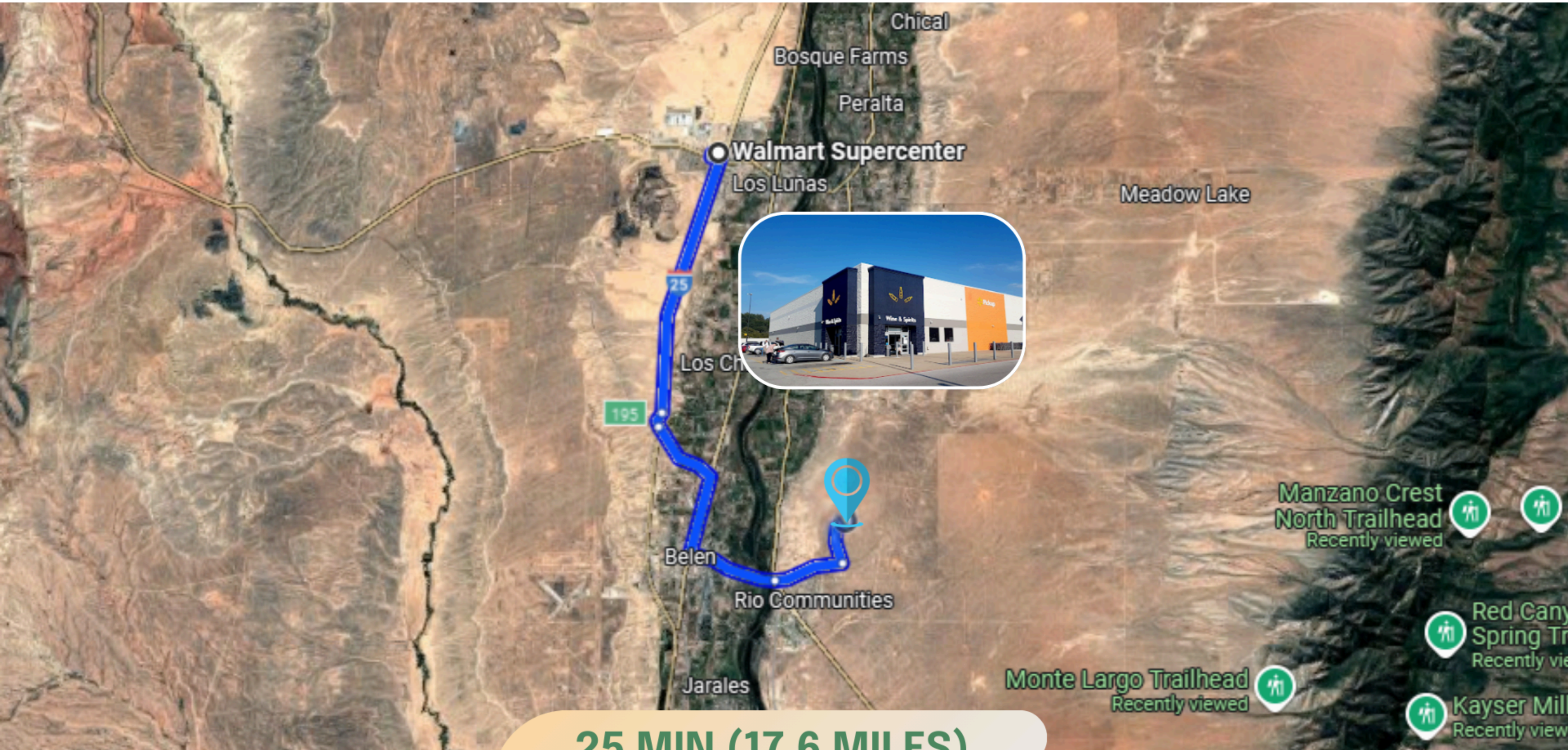
**1.3 miles to the right is the property.  
Rough road condition.**

# DRIVING DIRECTIONS

Belen

 10 min  
5.5 miles

Head east on NM-309 E/W Reinken Ave for 2.4 miles, continue on Manzano Expy for 1.9 miles, then turn left onto De Haan Loop and drive 1.3 miles. The  property is on the right.



Walmart Supercenter

Los Lunas

Los Ch

Belen

Rio Communities

Jarales

Chical

Bosque Farms

Peralta

Meadow Lake

Manzano Crest North Trailhead  
Recently viewed

Red Canyon Spring Trailhead  
Recently viewed

Monte Largo Trailhead  
Recently viewed

Kayser Mill  
Recently viewed

**25 MIN (17.6 MILES)**

**THIS PROPERTY IS 25 MIN (17.6 MILES) TO WALMART SUPERCENTER IN LOS LUNAS, NM.**



**42 MIN (38.5 MILES)**

**THIS PROPERTY IS 42 MIN (38.5 MILES) TO UNM HOSPITAL IN ALBUQUERQUE, NM.**



**33 MIN (21.7 MILES)**

**THIS PROPERTY IS 33 MIN (21.7 MILES) TO ISLETA LAKES & RV PARK IN ISLETA PUEBLO, NM.**