

Exhibit "A"

PARCEL -4B-

A parcel of land in Government Lot Five (5), Section Seventeen (17), Township Forty-three (43) North, Range Five (5) East of the Fourth Principal Meridian, Winchester Township, Vilas County, Wisconsin, being parcel "-4B-" shown on Map No. 99-69 by Wilderness Surveying, Inc., dated June 10th, 1999, more particularly described as follows:

Commencing at the northwest corner of Government Lot 5, being the Quarter Corner common to Sections 17 and 18, marked by a capped aluminum monument; thence South 89 degrees 54 minutes 57 seconds East for a distance of 1448.40 feet along the north line of Government Lot 5 to a Meander Corner, marked by an aluminum capped iron pipe near the westerly shore of South Turtle Lake; thence meandering along the lake South 32 degrees 20 minutes 10 seconds East for a distance of 613.44 feet and South 68 degrees 59 minutes 01 seconds East for a distance of 302.28 feet to the PLACE OF BEGINNING, marked by an iron pipe. Thence continuing along the lake South 68 degrees 59 minutes 01 seconds East for a distance of 210.00 feet to an iron pipe; thence South 24 degrees 25 minutes 10 seconds West for a distance of 671.05 feet to an iron pipe on the south line of Government Lot 5; thence South 89 degrees 48 minutes 05 seconds West for a distance of 275.00 feet along the south line of Government Lot 5 to an iron pipe; thence North 27 degrees 24 minutes 32 seconds East for a distance of 774.20 feet to the place of beginning. The above lateral lot lines extend to the shore of South Turtle Lake, including the land lying between the lakeshore baseline and the water's edge.

Subject to a non-exclusive road and utility easement thirty (30) feet in width to benefit other properties located in said Government Lot 5, the centerline of which is more particularly described as follows: Commencing at the northwesterly corner of the above described parcel of land; thence South 27 degrees 24 minutes 32 seconds West for a distance of 250.54 feet to the place of beginning of said centerline. Thence South 81 degrees 54 minutes 23 seconds East for a distance of 109.27 feet; thence South 72 degrees 22 minutes 47 seconds East for a distance of 89.30 feet; thence South 57 degrees 38 minutes 22 seconds East for a distance of 29.44 feet and there terminating.

Together with a non-exclusive road and utility easement to Keppler Road over the existing road located 225.44 feet southerly of the northeast corner of said parcel.

406765

CSM5269

675-042
-2- 3.45ac

675-041
-1- 3.46ac

GL05

670-06 G5-7

CSM5269

C1560
±5.12AC

1001.4
1001.39'

670-04 G5-5

670-07 G5-8

SEE C1560

670-01 G5-2

SEE C1560

670-02 G5-3

C1560
±6.27AC

#3

#4

#4B

#5

#6

700'

130'

140'

210.00'

210.00'

210.00'

600'

1237'

570.39'

774.20'

774.20'

1001.4
1001.39'

1237'

1001.4
1001.39'

1001.4
1001.39'

1001.4
1001.39'

1001.4
1001.39'

1001.4
1001.39'

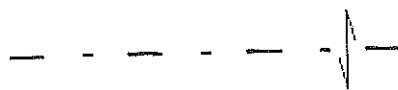
1001.4
1001.39'

1001.4
1001.39'

Solitude Ln

30' EASEMENT RD

Keppler Rd



30' EAST
115.83'

31.07'

115.83'

460'

275.00'

275.00'

450'

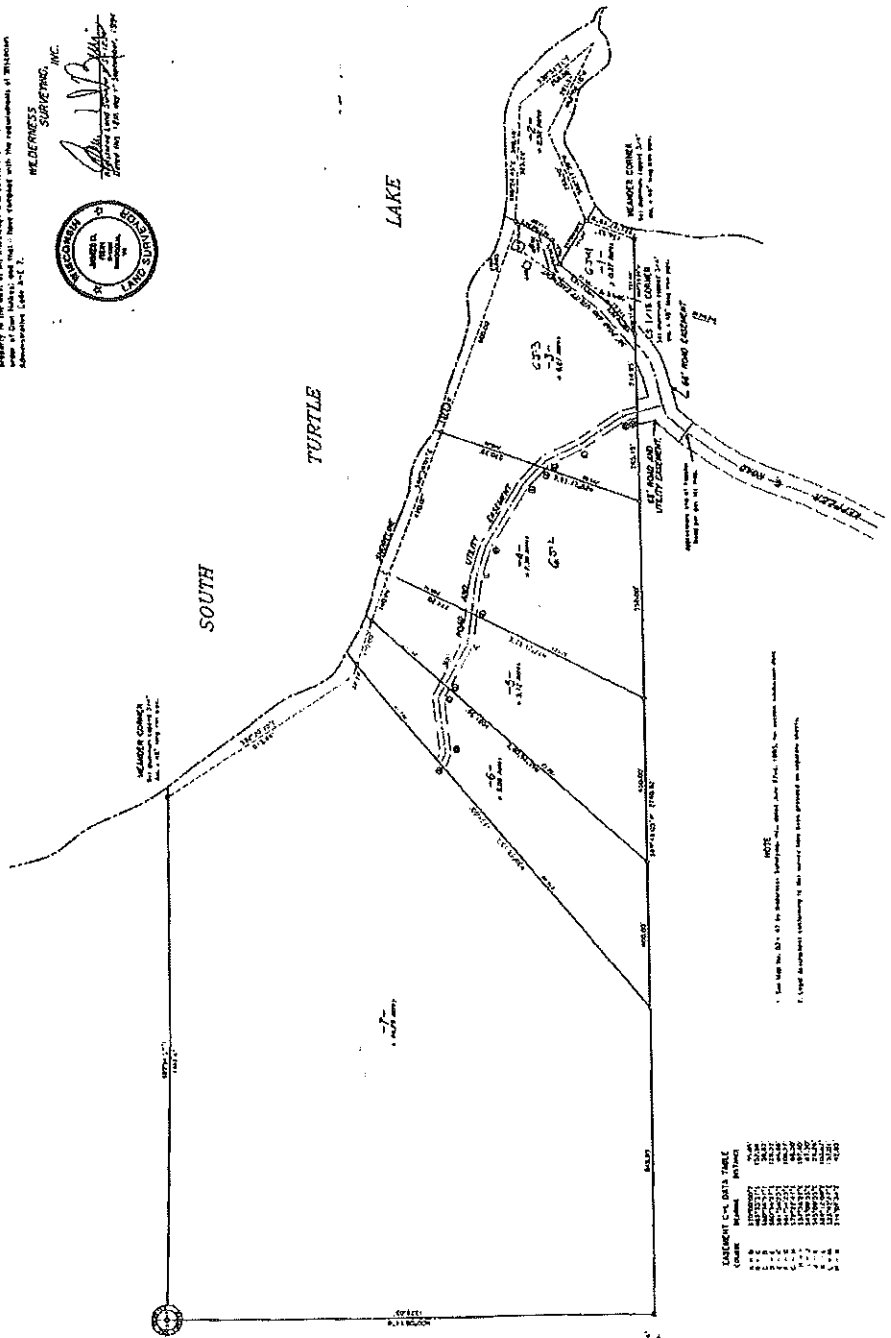
REVISIONS TO THIS PLAN
 No. 12-11-02
 12-11-02

**GOV'T. LOT 5
 SECTION 17, T43N, R5E**

Winchester Township
 Winnebago County
 WISCONSIN
 SURVEYOR'S CERTIFICATE
 I, James O. Rich, Registered Land Surveyor No. 5-1134, have carefully and lawfully surveyed the county, township, range and section herein described and have found the same to conform with the requirements of Wisconsin Administrative Code Sec. 7.

MELDERNESS SURVEYING, INC.
 1200 W. 12th Ave. #100, Superior, WI 54880

James O. Rich
 Registered Land Surveyor
 No. 5-1134



SCALE 1" = 100'
 1" = 30.48 meters

Plan No. 10.17 & 17-17-02
 Drawn by M. O'Brien

MEASUREMENT DATA TABLE

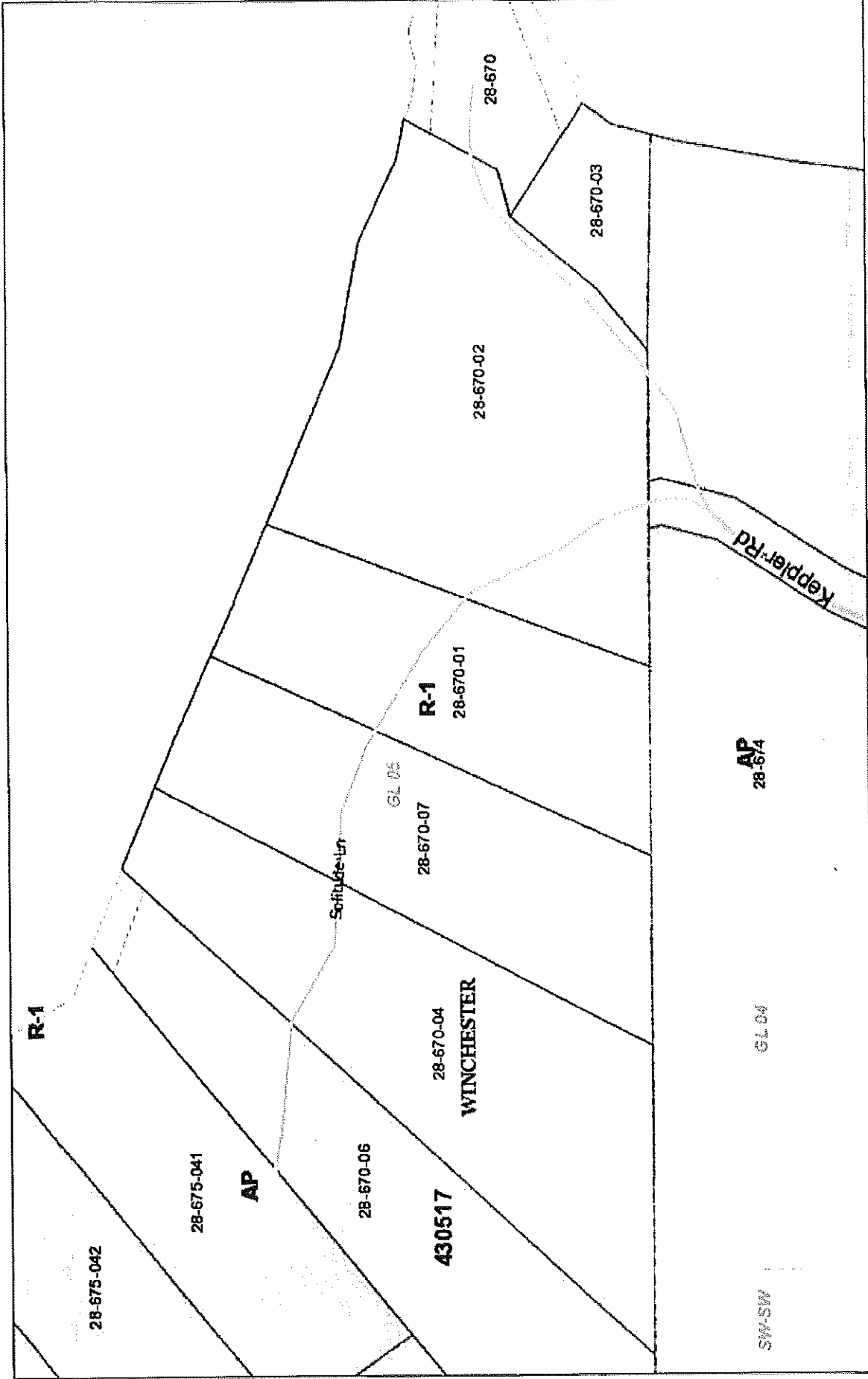
LINE	BEARING	DISTANCE
1	S 89° 15' 00" W	120.00
2	S 89° 15' 00" W	120.00
3	S 89° 15' 00" W	120.00
4	S 89° 15' 00" W	120.00
5	S 89° 15' 00" W	120.00
6	S 89° 15' 00" W	120.00
7	S 89° 15' 00" W	120.00
8	S 89° 15' 00" W	120.00
9	S 89° 15' 00" W	120.00
10	S 89° 15' 00" W	120.00
11	S 89° 15' 00" W	120.00
12	S 89° 15' 00" W	120.00
13	S 89° 15' 00" W	120.00
14	S 89° 15' 00" W	120.00
15	S 89° 15' 00" W	120.00
16	S 89° 15' 00" W	120.00
17	S 89° 15' 00" W	120.00
18	S 89° 15' 00" W	120.00
19	S 89° 15' 00" W	120.00
20	S 89° 15' 00" W	120.00
21	S 89° 15' 00" W	120.00
22	S 89° 15' 00" W	120.00
23	S 89° 15' 00" W	120.00
24	S 89° 15' 00" W	120.00
25	S 89° 15' 00" W	120.00
26	S 89° 15' 00" W	120.00
27	S 89° 15' 00" W	120.00
28	S 89° 15' 00" W	120.00
29	S 89° 15' 00" W	120.00
30	S 89° 15' 00" W	120.00
31	S 89° 15' 00" W	120.00
32	S 89° 15' 00" W	120.00
33	S 89° 15' 00" W	120.00
34	S 89° 15' 00" W	120.00
35	S 89° 15' 00" W	120.00
36	S 89° 15' 00" W	120.00
37	S 89° 15' 00" W	120.00
38	S 89° 15' 00" W	120.00
39	S 89° 15' 00" W	120.00
40	S 89° 15' 00" W	120.00
41	S 89° 15' 00" W	120.00
42	S 89° 15' 00" W	120.00
43	S 89° 15' 00" W	120.00
44	S 89° 15' 00" W	120.00
45	S 89° 15' 00" W	120.00
46	S 89° 15' 00" W	120.00
47	S 89° 15' 00" W	120.00
48	S 89° 15' 00" W	120.00
49	S 89° 15' 00" W	120.00
50	S 89° 15' 00" W	120.00
51	S 89° 15' 00" W	120.00
52	S 89° 15' 00" W	120.00
53	S 89° 15' 00" W	120.00
54	S 89° 15' 00" W	120.00
55	S 89° 15' 00" W	120.00
56	S 89° 15' 00" W	120.00
57	S 89° 15' 00" W	120.00
58	S 89° 15' 00" W	120.00
59	S 89° 15' 00" W	120.00
60	S 89° 15' 00" W	120.00
61	S 89° 15' 00" W	120.00
62	S 89° 15' 00" W	120.00
63	S 89° 15' 00" W	120.00
64	S 89° 15' 00" W	120.00
65	S 89° 15' 00" W	120.00
66	S 89° 15' 00" W	120.00
67	S 89° 15' 00" W	120.00
68	S 89° 15' 00" W	120.00
69	S 89° 15' 00" W	120.00
70	S 89° 15' 00" W	120.00
71	S 89° 15' 00" W	120.00
72	S 89° 15' 00" W	120.00
73	S 89° 15' 00" W	120.00
74	S 89° 15' 00" W	120.00
75	S 89° 15' 00" W	120.00
76	S 89° 15' 00" W	120.00
77	S 89° 15' 00" W	120.00
78	S 89° 15' 00" W	120.00
79	S 89° 15' 00" W	120.00
80	S 89° 15' 00" W	120.00
81	S 89° 15' 00" W	120.00
82	S 89° 15' 00" W	120.00
83	S 89° 15' 00" W	120.00
84	S 89° 15' 00" W	120.00
85	S 89° 15' 00" W	120.00
86	S 89° 15' 00" W	120.00
87	S 89° 15' 00" W	120.00
88	S 89° 15' 00" W	120.00
89	S 89° 15' 00" W	120.00
90	S 89° 15' 00" W	120.00
91	S 89° 15' 00" W	120.00
92	S 89° 15' 00" W	120.00
93	S 89° 15' 00" W	120.00
94	S 89° 15' 00" W	120.00
95	S 89° 15' 00" W	120.00
96	S 89° 15' 00" W	120.00
97	S 89° 15' 00" W	120.00
98	S 89° 15' 00" W	120.00
99	S 89° 15' 00" W	120.00
100	S 89° 15' 00" W	120.00

1. See Map No. 10.17 & 17-17-02 for additional information.
 2. All measurements taken on or about June 17th, 1985, by James O. Rich.

1. 1/16" SCALE
 2. 1/4" = 100'

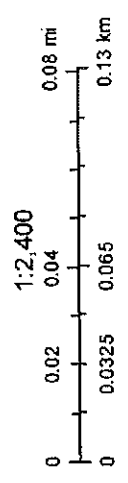
1. 1/16" SCALE
 2. 1/4" = 100'

Vilas County Planning and Zoning Map



11/14/2018 8:28:23 AM

- Section Labels
- Sub-Section Labels
- Map Number Only
- Town Boundary
- Section Corners
- Section Corner
- Quarter Corner
- Section Line
- Quarter/Gov't Lot Line
- Water Access
- Boat Ramp
- Carry-In Lake Access



Created by Vilas County Mapping Department

Vilas County Mapping Department
 This map is to be used for reference purposes only. This map does not represent a survey.