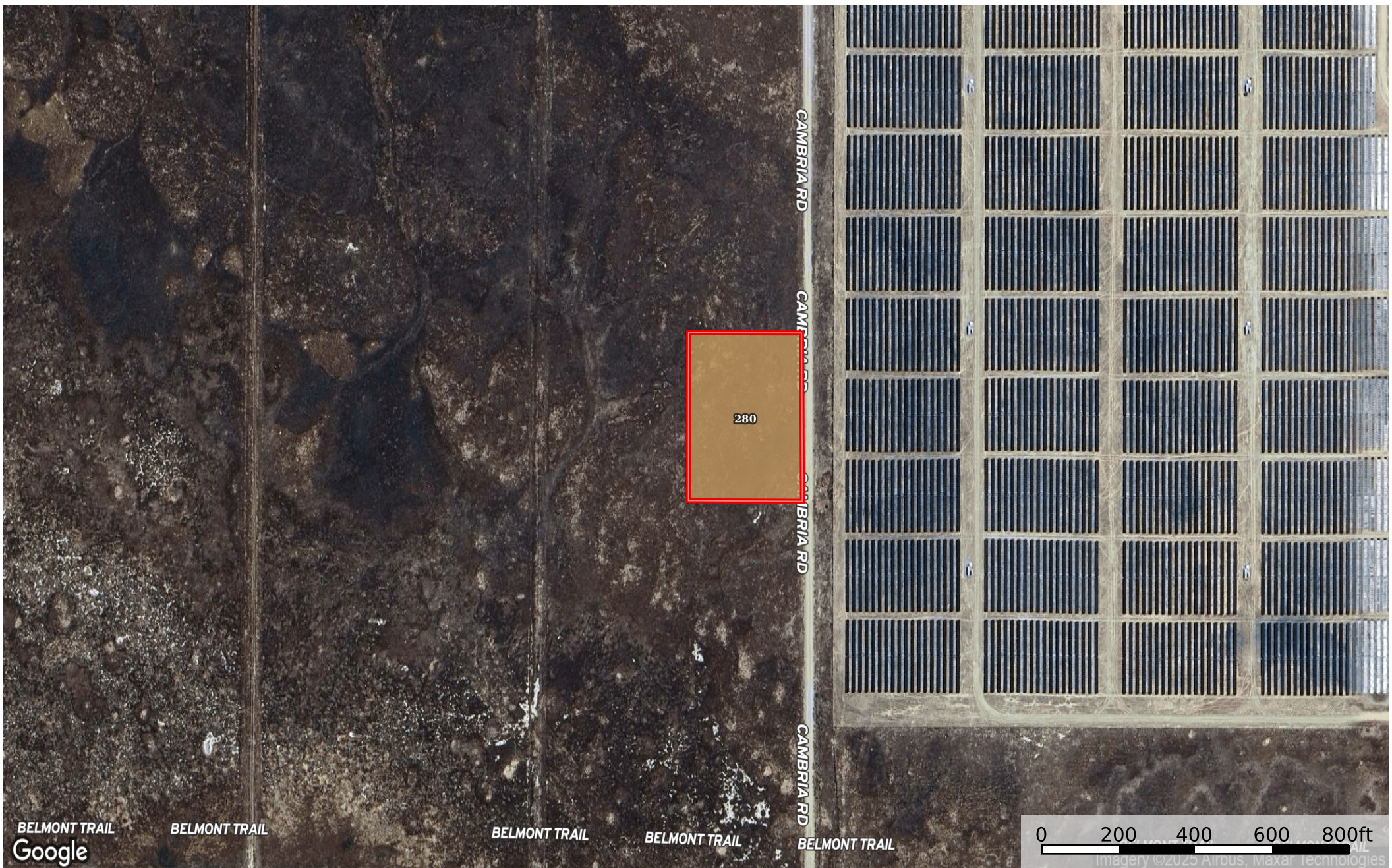


# 2.73 Acres Santa Margarita, San Luis Obispo County, CA

San Luis Obispo County, California, 2.73 AC +/-



 Boundary

|  Boundary 2.52 ac

SOIL CODE	SOIL DESCRIPTION	ACRES	%	CPI	NCCPI	CAP
280	Seaback-Panoza-Jenks complex, 9 to 15 percent slopes	2.52	100	0	11	7e
TOTALS		2.52(*)	100%	-	11.0	7

(\*) Total acres may differ in the second decimal compared to the sum of each acreage soil. This is due to a round error because we only show the acres of each soil with two decimal.

