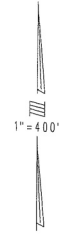


THIS MAP IS FOR THE PURPOSE
OF AD VALOREM TAXATION ONLY.

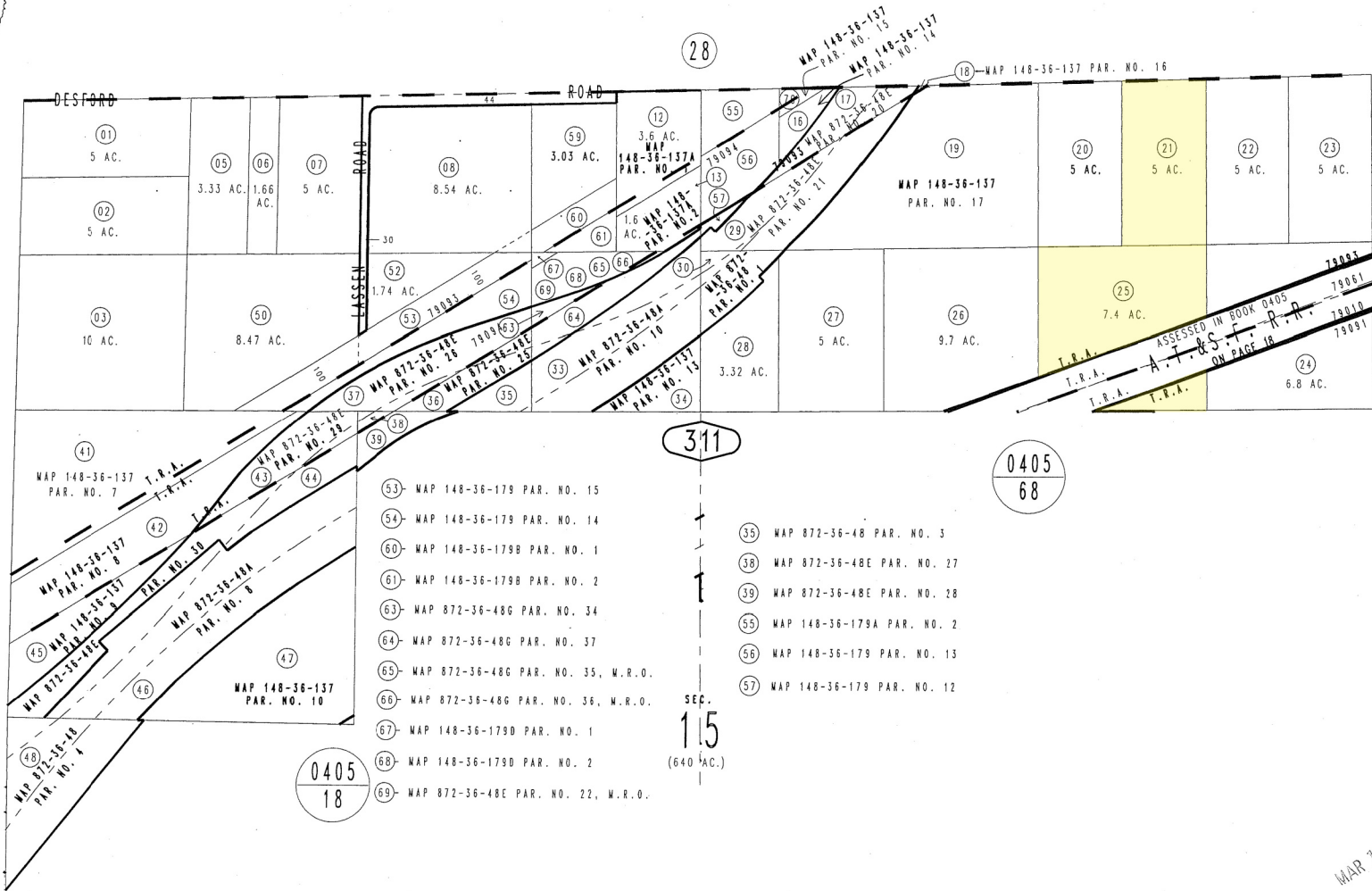
Ptn. Sec.15, T.3N.,R.5W., S.B.B.&M.

Hesperia Unified
Tax Rate Area
79010 79091 79093
79061 79094

0357-31



1"=400'



0405
18

0405
68

0405
18

311

SEC.
15

(640 AC.)

- 53- WAP 148-36-179 PAR. NO. 15
- 54- WAP 148-36-179 PAR. NO. 14
- 60- WAP 148-36-179B PAR. NO. 1
- 61- WAP 148-36-179B PAR. NO. 2
- 63- WAP 872-36-48G PAR. NO. 34
- 64- WAP 872-36-48G PAR. NO. 37
- 65- WAP 872-36-48G PAR. NO. 35, W.R.O.
- 66- WAP 872-36-48G PAR. NO. 36, W.R.O.
- 67- WAP 148-36-179D PAR. NO. 1
- 68- WAP 148-36-179D PAR. NO. 2
- 69- WAP 872-36-48E PAR. NO. 22, W.R.O.
- 35- WAP 872-36-48 PAR. NO. 3
- 38- WAP 872-36-48E PAR. NO. 27
- 39- WAP 872-36-48E PAR. NO. 28
- 55- WAP 148-36-179A PAR. NO. 2
- 56- WAP 148-36-179 PAR. NO. 13
- 57- WAP 148-36-179 PAR. NO. 12

ASSESSED IN BOOK 0405
A.T.&S.F.R.R.
ON PAGE 18

MAR 10 2010

Assessor's Map
Book 0357 Page 31
San Bernardino County

REVISED
04/03/08 KA
06/04/08 RM
10/10/08 LH
12/04/08 KC
01/15/10 LH