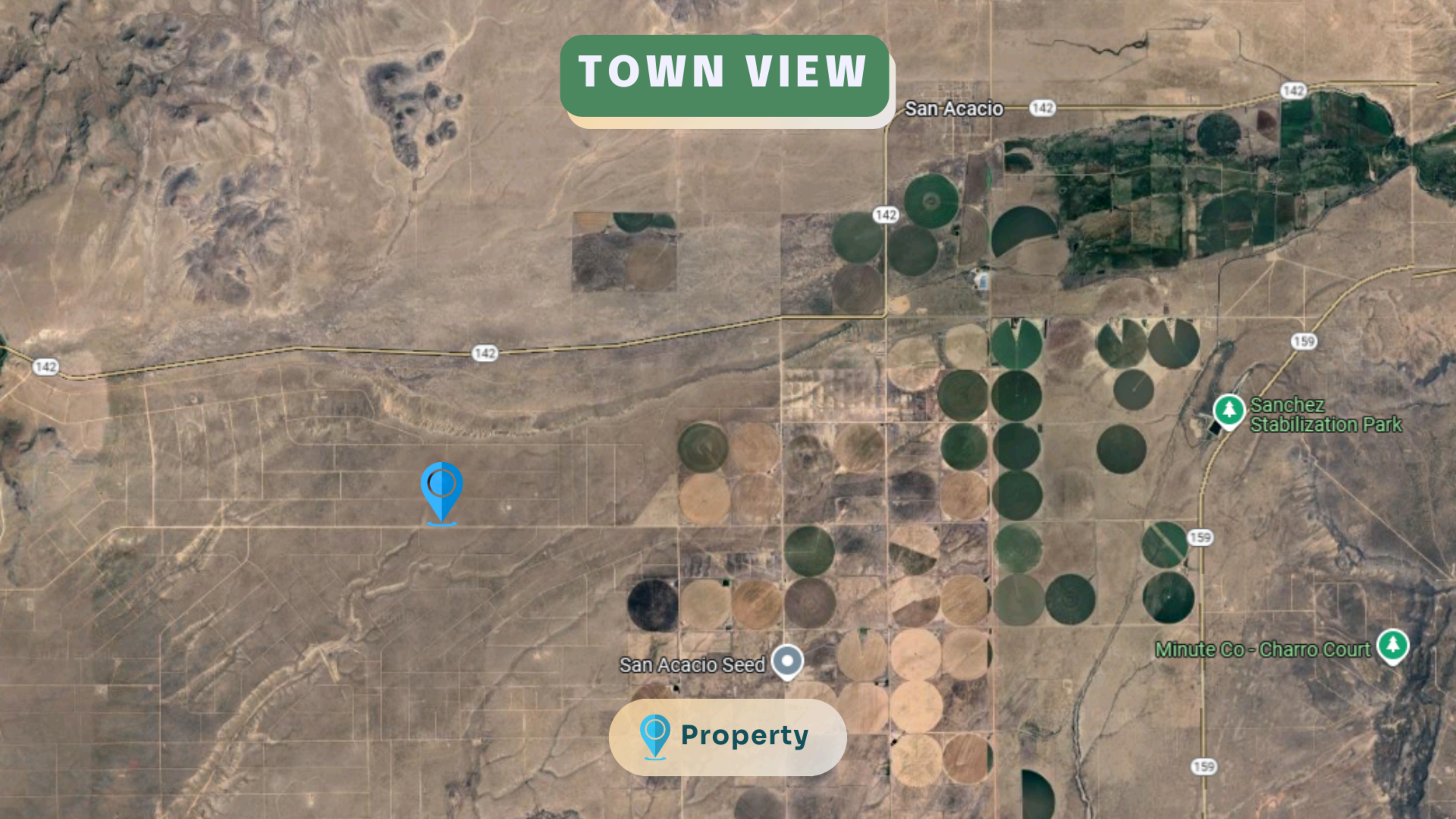


TOWN VIEW



San Acacio

142

142

142

142

142

159

159

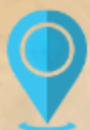
159

San Acacio Seed

159

Minute Co - Charro Court

159

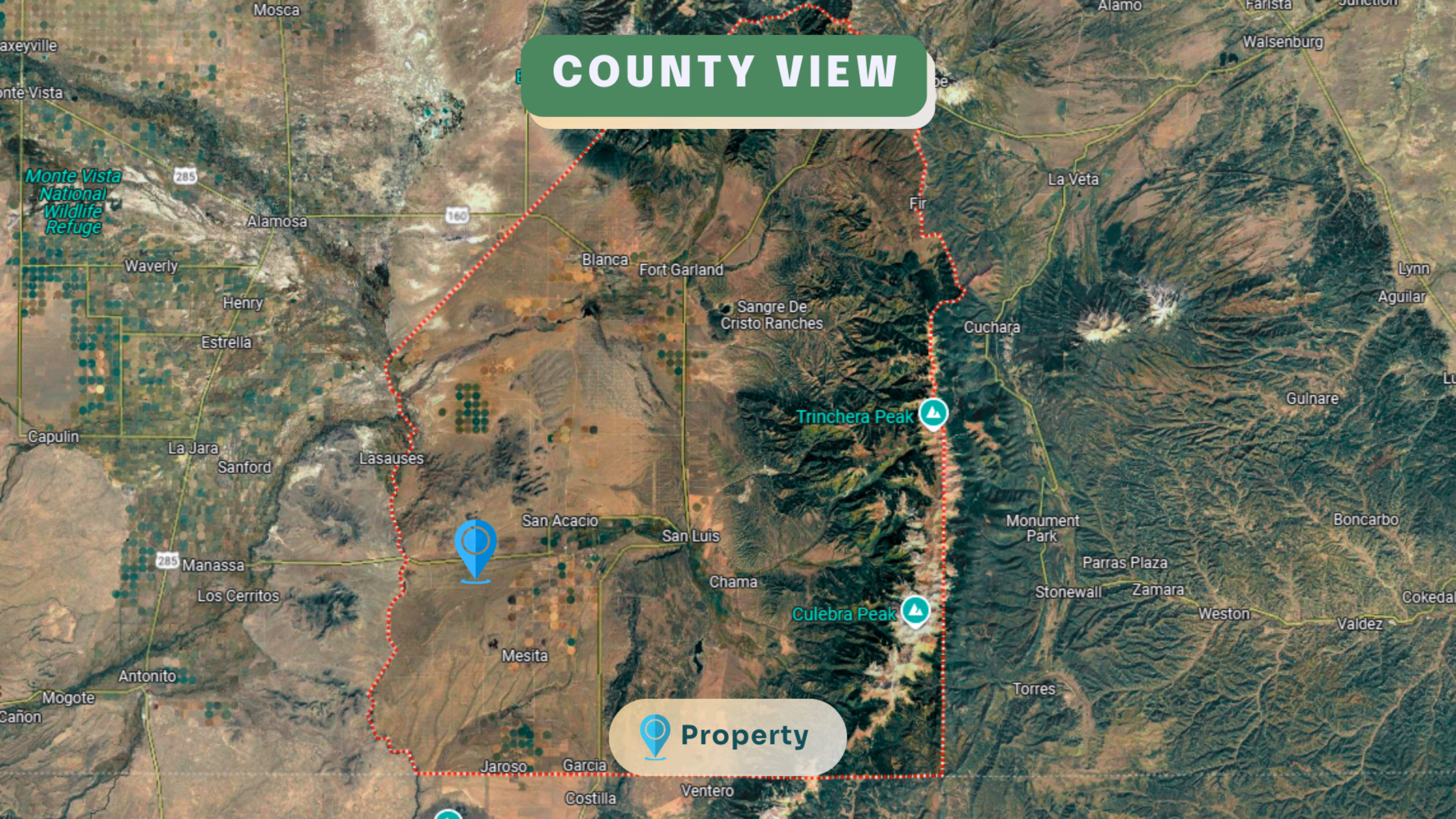


Property



Sanchez Stabilization Park


COUNTY VIEW



Monte Vista
National
Wildlife
Refuge

Trinchera Peak

Culebra Peak

 Property

KEY ACCESS ROUTES

US Highway 285

Manassa

Los Cerritos

Antonito

Lobatos

San Antonio

285

Cañon

Capulin

La Jara

Sanford


Lasauses

San Acacio

Mesita

374-406 Main Street

Chama
San Pablo
Los Fuertes

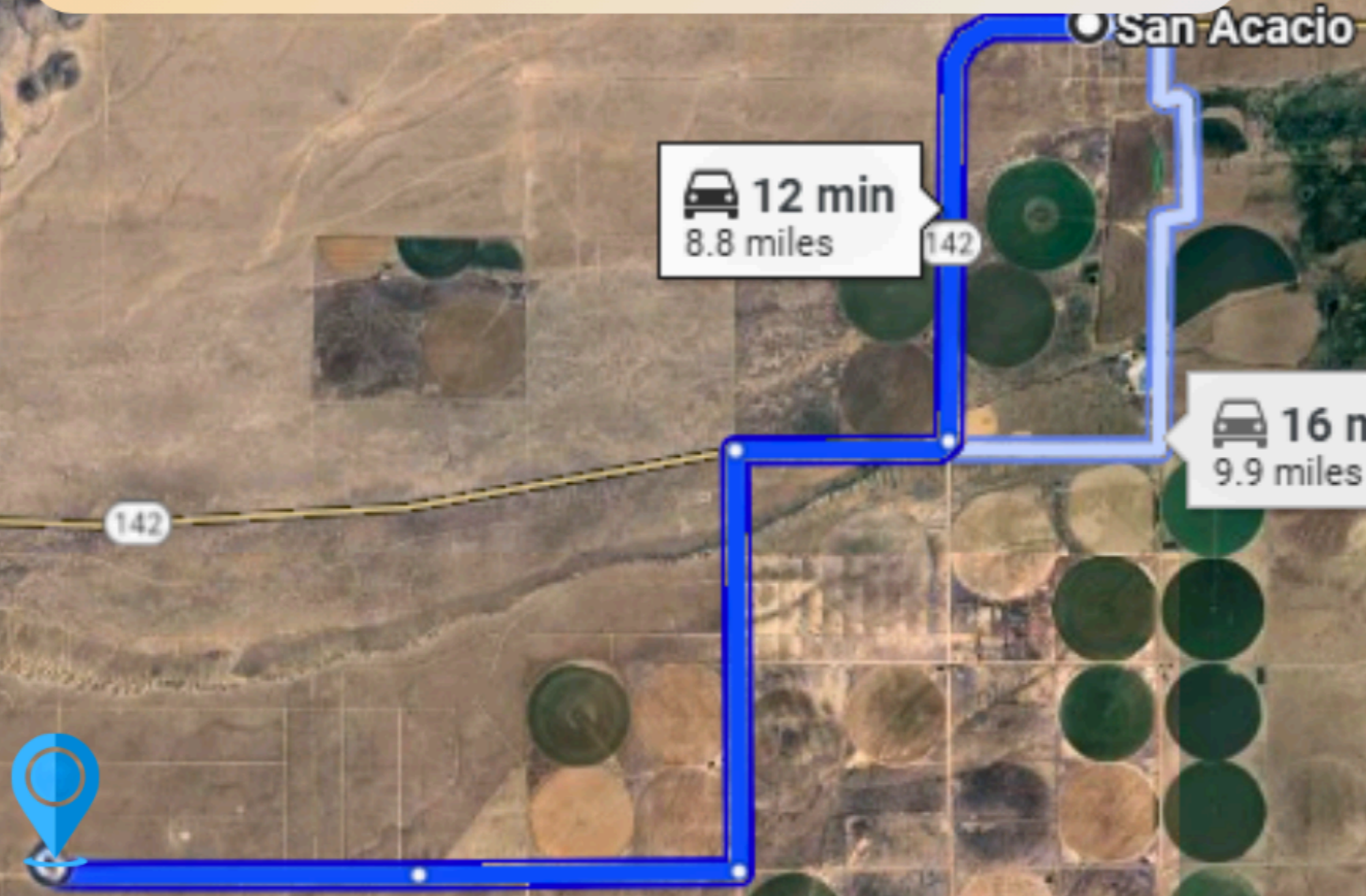
The  property is situated on Smith Road along Co 142, offering convenient access from both US Highway 159 and US Highway 285, making it highly accessible.


Ventero

Garcia

Costilla

DRIVING DIRECTIONS



From Cerritos Rd, take CO-142 W for 3.5 miles, left on Rd 10 for 2 miles, right on Rd M for 1.5 miles, continue on Nance Blvd for 1.7 miles, then right on Smith Rd. The  property is on the left.