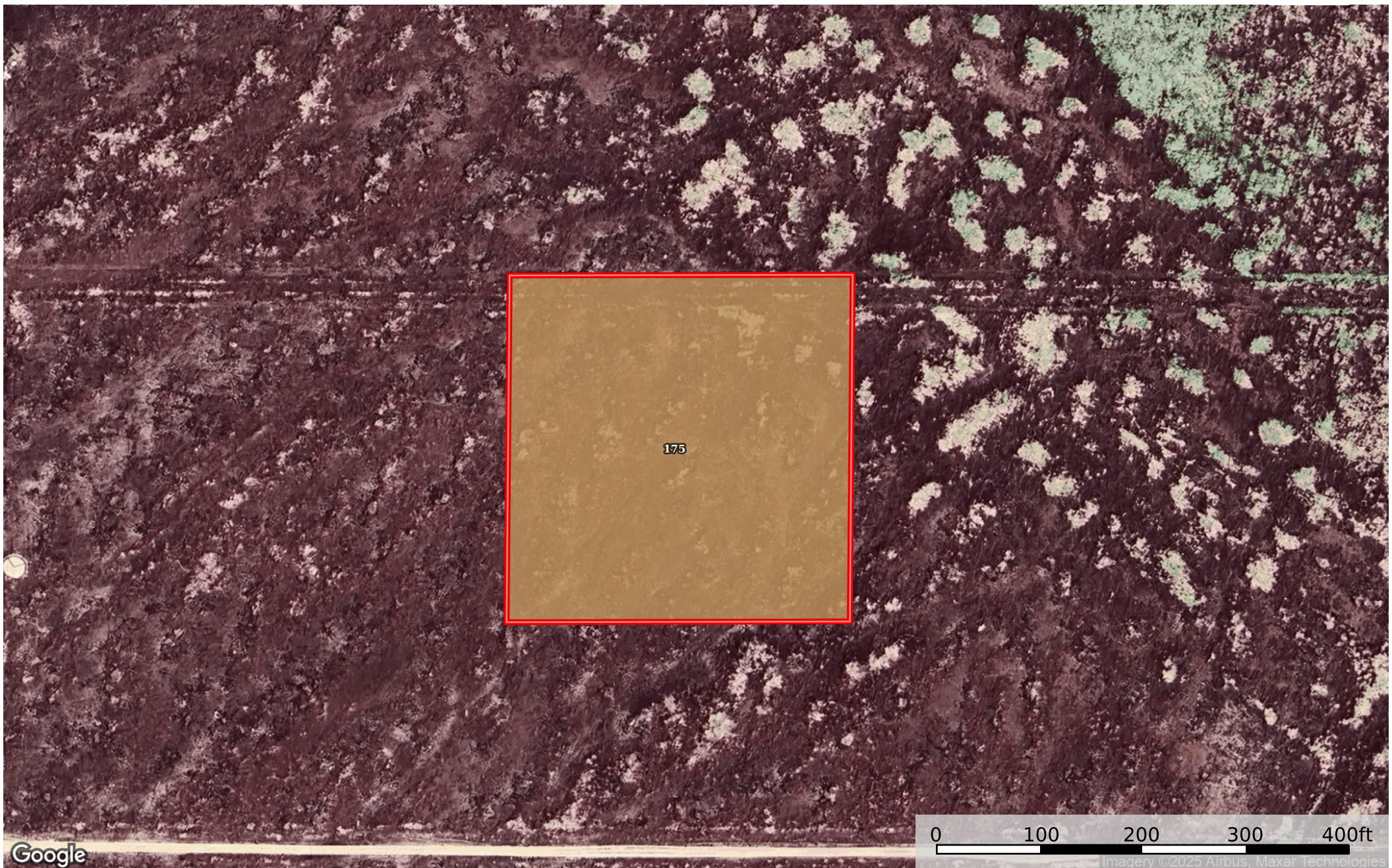
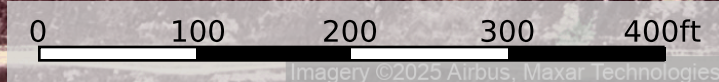


**2.50 Acres Santa Margarita, San Luis Obispo County, CA**  
San Luis Obispo County, California, 2.5 AC +/-




175



Google

Imagery ©2025 Airbus, Maxar Technologies

 Boundary

 The information contained herein was obtained from sources deemed to be reliable. Land id™ Services makes no warranties or guarantees as to the completeness or accuracy thereof.

Boundary 2.56 ac

SOIL CODE	SOIL DESCRIPTION	ACRES	%	CPI	NCCPI	CAP
175	Polonio-Thomhill complex, 2 to 9 percent slopes	2.56	100	0	17	4e
TOTALS		2.56(*)	100%	-	17.0	4

(\*) Total acres may differ in the second decimal compared to the sum of each acreage soil. This is due to a round error because we only show the acres of each soil with two decimal.

