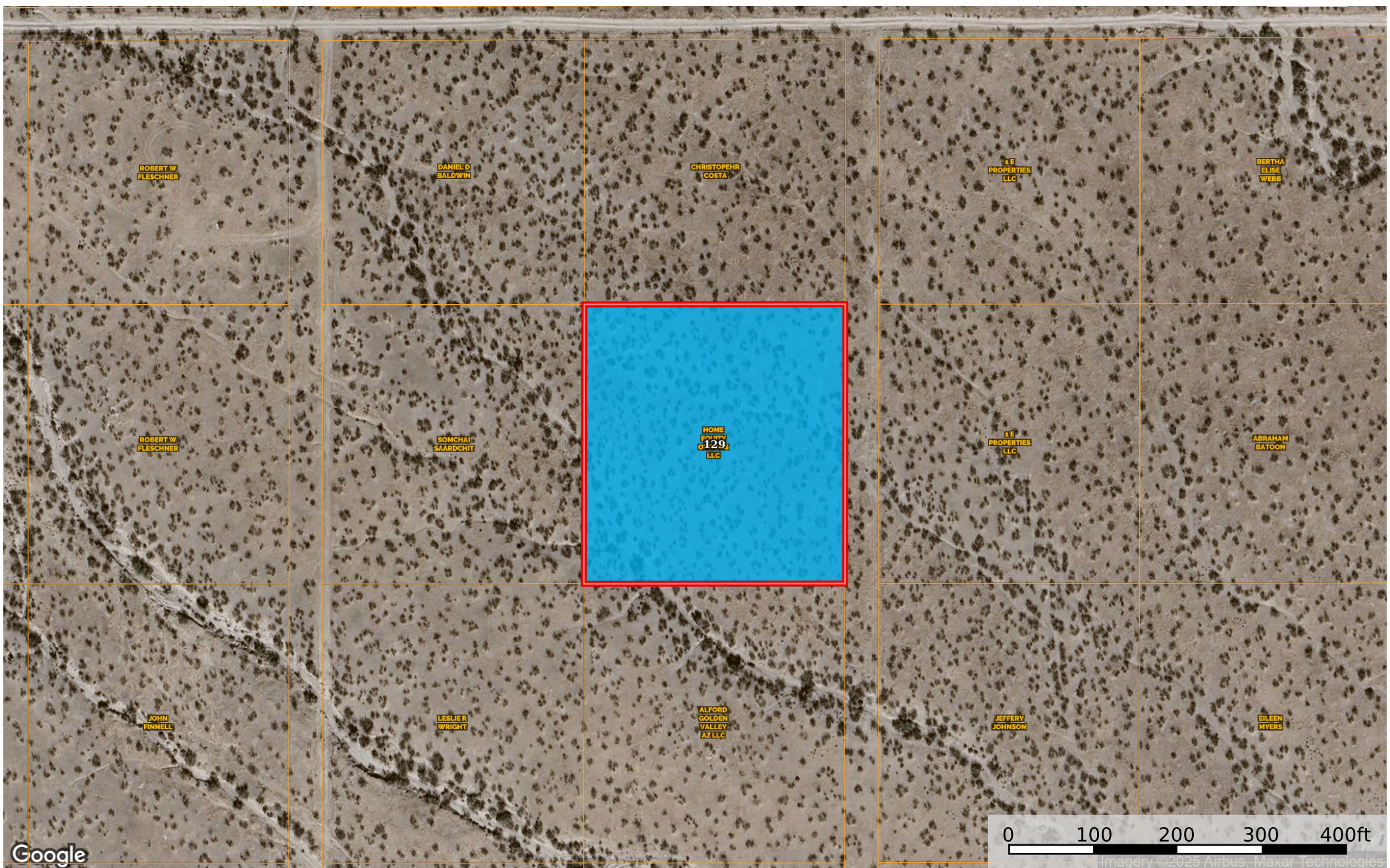


2.35 Acres Golden Valley, Mohave County, AZ 217-09-183

Mohave County, Arizona, 2.35 AC +/-



 Boundary

Boundary 2.35 ac

SOIL CODE	SOIL DESCRIPTION	ACRES	%	CPI	NCCPI	CAP
129	Whitehills very gravelly loam, dry, 2 to 15 percent slopes	2.35	100	0	6	7c
TOTALS		2.35(*)	100%	-	6.0	7

(*) Total acres may differ in the second decimal compared to the sum of each acreage soil. This is due to a round error because we only show the acres of each soil with two decimal.

