

Final Plat For:

The Highlands

LAND LOT ONE

TRACT - 5th SECTION - 2nd

CO - PICKENS & CLAIR STATE - GEORGIA

DATE - July 13, 2000

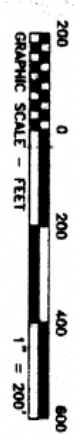
CHAUSTAIN & REECE, P.C.
LAND SURVEYING and PLANNING

P.O. Box 1358
Clinton, GA 30114
(770) 479-9696



P.O. Box 1624
Ellijay, GA 30540
(706) 276-7526

LOT FILE: 9991922 SHEET 02 OF 06



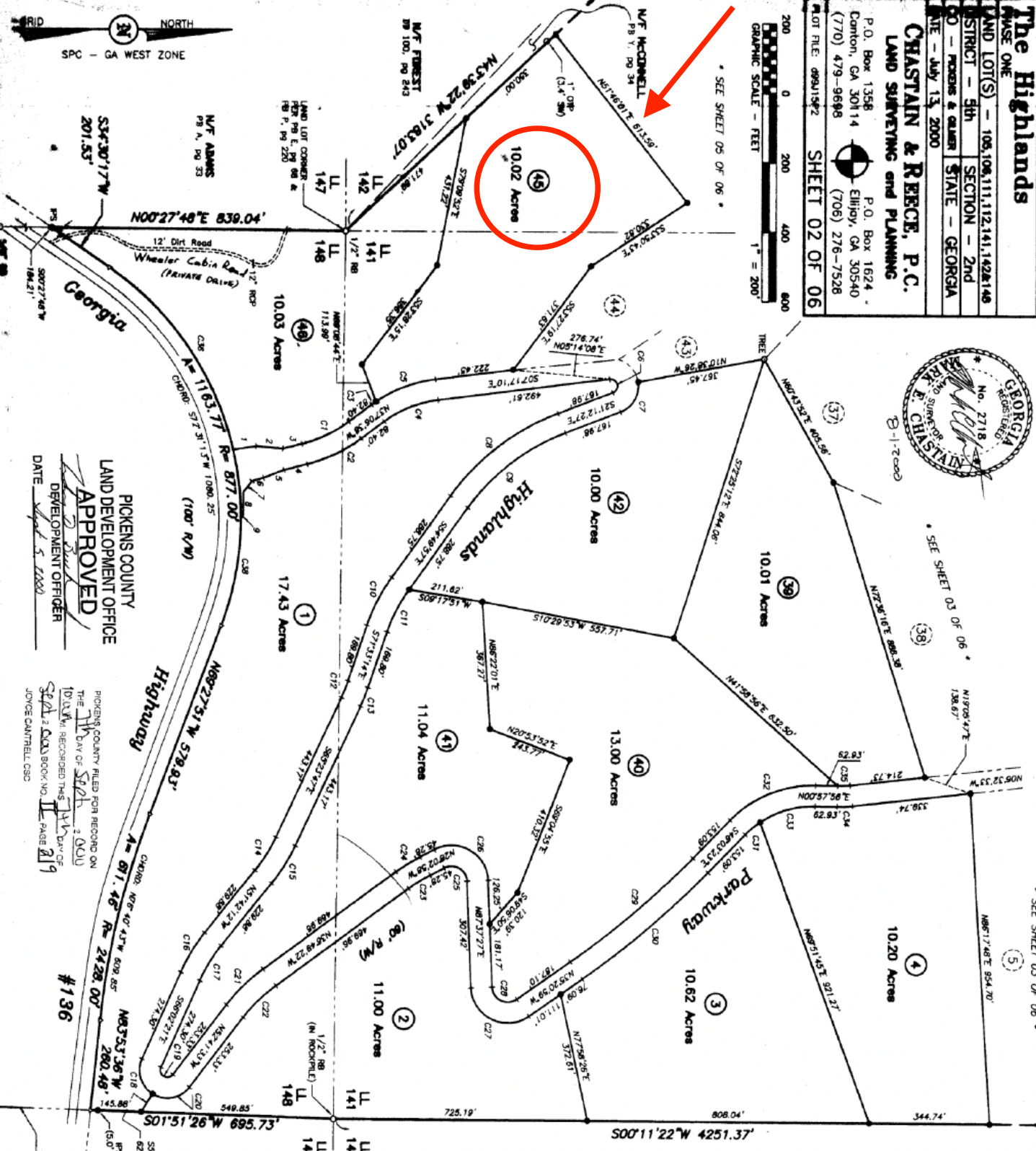
* SEE SHEET 05 OF 06 *



* SEE SHEET 03 OF 06 *

BK 11 PG 219

* SEE SHEET 03 OF 06 *



LOT LINE CURVE TABLE

CURVE	BEARING	LENGTH	CHORD	CHORD BEARING
1	S77°46'29"E	146.08	147.14	N62°53'36"W
2	S77°46'29"E	146.08	147.14	N62°53'36"W
3	S77°46'29"E	146.08	147.14	N62°53'36"W
4	S77°46'29"E	146.08	147.14	N62°53'36"W
5	S77°46'29"E	146.08	147.14	N62°53'36"W
6	S77°46'29"E	146.08	147.14	N62°53'36"W
7	S77°46'29"E	146.08	147.14	N62°53'36"W
8	S77°46'29"E	146.08	147.14	N62°53'36"W
9	S77°46'29"E	146.08	147.14	N62°53'36"W
10	S77°46'29"E	146.08	147.14	N62°53'36"W
11	S77°46'29"E	146.08	147.14	N62°53'36"W
12	S77°46'29"E	146.08	147.14	N62°53'36"W
13	S77°46'29"E	146.08	147.14	N62°53'36"W
14	S77°46'29"E	146.08	147.14	N62°53'36"W
15	S77°46'29"E	146.08	147.14	N62°53'36"W
16	S77°46'29"E	146.08	147.14	N62°53'36"W
17	S77°46'29"E	146.08	147.14	N62°53'36"W
18	S77°46'29"E	146.08	147.14	N62°53'36"W
19	S77°46'29"E	146.08	147.14	N62°53'36"W
20	S77°46'29"E	146.08	147.14	N62°53'36"W
21	S77°46'29"E	146.08	147.14	N62°53'36"W
22	S77°46'29"E	146.08	147.14	N62°53'36"W
23	S77°46'29"E	146.08	147.14	N62°53'36"W
24	S77°46'29"E	146.08	147.14	N62°53'36"W
25	S77°46'29"E	146.08	147.14	N62°53'36"W
26	S77°46'29"E	146.08	147.14	N62°53'36"W
27	S77°46'29"E	146.08	147.14	N62°53'36"W
28	S77°46'29"E	146.08	147.14	N62°53'36"W
29	S77°46'29"E	146.08	147.14	N62°53'36"W
30	S77°46'29"E	146.08	147.14	N62°53'36"W
31	S77°46'29"E	146.08	147.14	N62°53'36"W
32	S77°46'29"E	146.08	147.14	N62°53'36"W
33	S77°46'29"E	146.08	147.14	N62°53'36"W
34	S77°46'29"E	146.08	147.14	N62°53'36"W
35	S77°46'29"E	146.08	147.14	N62°53'36"W
36	S77°46'29"E	146.08	147.14	N62°53'36"W
37	S77°46'29"E	146.08	147.14	N62°53'36"W
38	S77°46'29"E	146.08	147.14	N62°53'36"W

LOT LINE CALL TABLE

COURSE	BEARING	DISTANCE
1	N62°53'36"W	66.53'
2	N62°53'36"W	74.94'
3	N62°53'36"W	55.05'
4	N62°53'36"W	67.44'
5	N62°53'36"W	34.41'
6	N62°53'36"W	39.53'
7	N62°53'36"W	65.12'
8	N62°53'36"W	11.49'
9	N62°53'36"W	11.49'

N/F TAYNE MOUNTAIN ASSOCIATES
REFERENCE PLAT BY BARTON SURVEYING, INC.
DATED AUGUST 12, 1999

LEGEND

- PF ○ IRON PIN FOUND
- IPS ○ IRON PIN SET
- △ COMPUTED POSITION
- LAND LOT LINE (L.L.)
- DB / PG DEED BOOK & PAGE
- PS / PS RIGHT OF WAY (R/W)
- STRM / STRM STREAM / R/W
- N/F NOW OR FORMERLY
- E or P/L PROPERTY LINE
- ± or C/L CENTER LINE
- OR OVERHEAD UTILITY
- OR OR UTILITY POLE
- OR or RB REMOVING ROAD
- OR OR OPEN TOP PILE
- OR OR CHUTE TOP PILE
- PAV. PAVEMENT
- OR OR POINT OF BEGINNING
- P.O.B. POINT OF BEGINNING
- NON-PLAT DIMENSIONS ARE OUTSIDE/INTERNAL DIMENSIONS ALL P.S. ARE 5/8" REBAR UNLESS OTHERWISE NOTED

PICKENS COUNTY
LAND DEVELOPMENT OFFICE
APPROVED
DATE July 5, 2000
DEVELOPMENT OFFICER

PICKENS COUNTY FILED FOR RECORD ON
THE DAY OF SEP 2000
BY JOYCE CANTRELL, CSR
BOOK NO. 19 PAGE 219

#136

LAND LOT LINE
BY P.S. L. PG. 06

SPC - GA WEST ZONE

