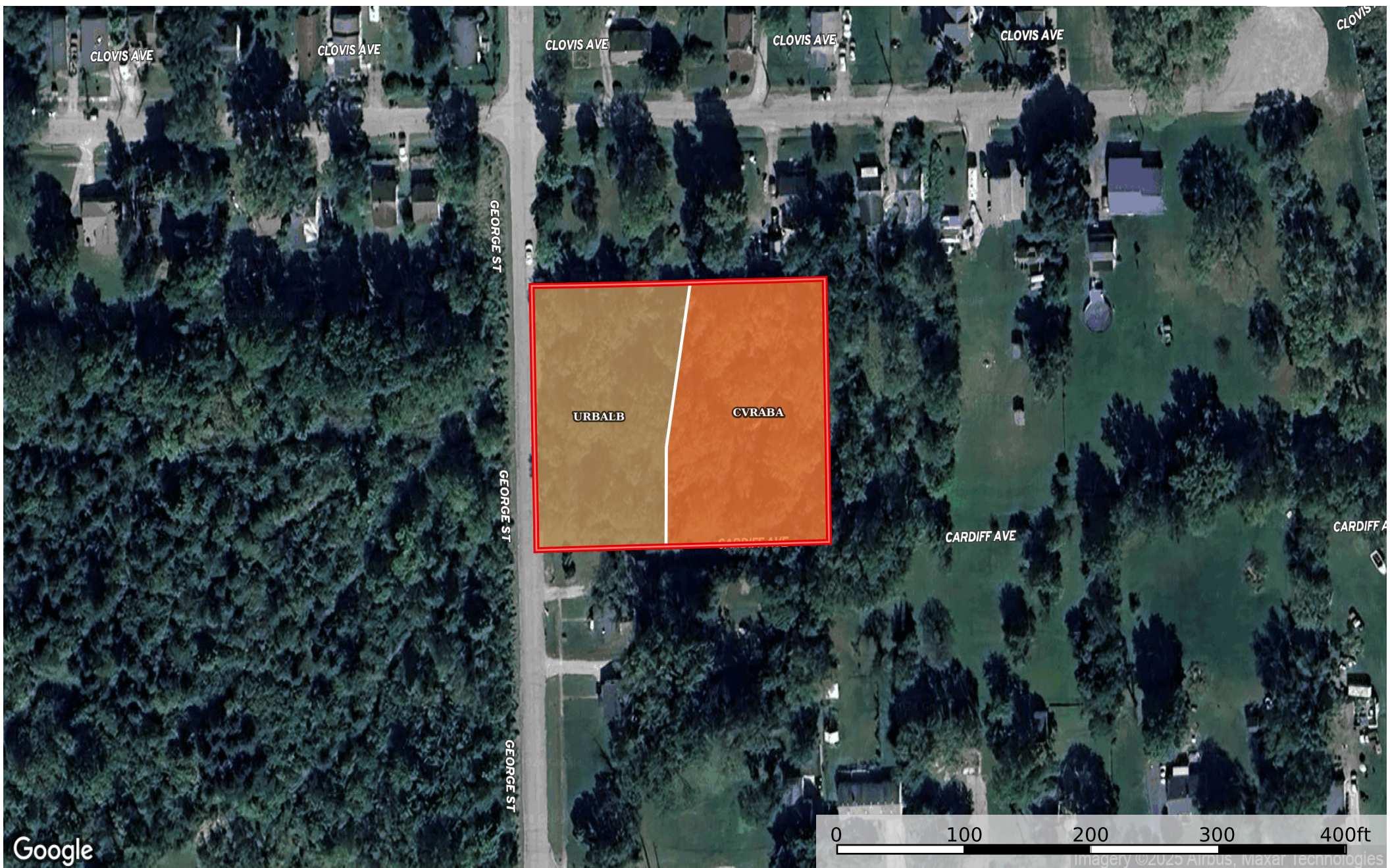



0.69 Acre Mount Morris, Genesee County, MI 11-18-552-
Genesee County, Michigan, 0.69 AC +/-



 Boundary

 Boundary 0.92 ac

SOIL CODE	SOIL DESCRIPTION	ACRES	%	CPI	NCCPI	CAP
CvrabA	Conover loam, 0 to 3 percent slopes	0.48	52.17	0	53	2w
UrbalB	Urban land-Crosier-Williamstown complex, 2 to 6 percent slopes	0.44	47.83	0	31	-
TOTALS		0.92(*)	100%	-	42.48	2.0

(*) Total acres may differ in the second decimal compared to the sum of each acreage soil. This is due to a round error because we only show the acres of each soil with two decimal.

