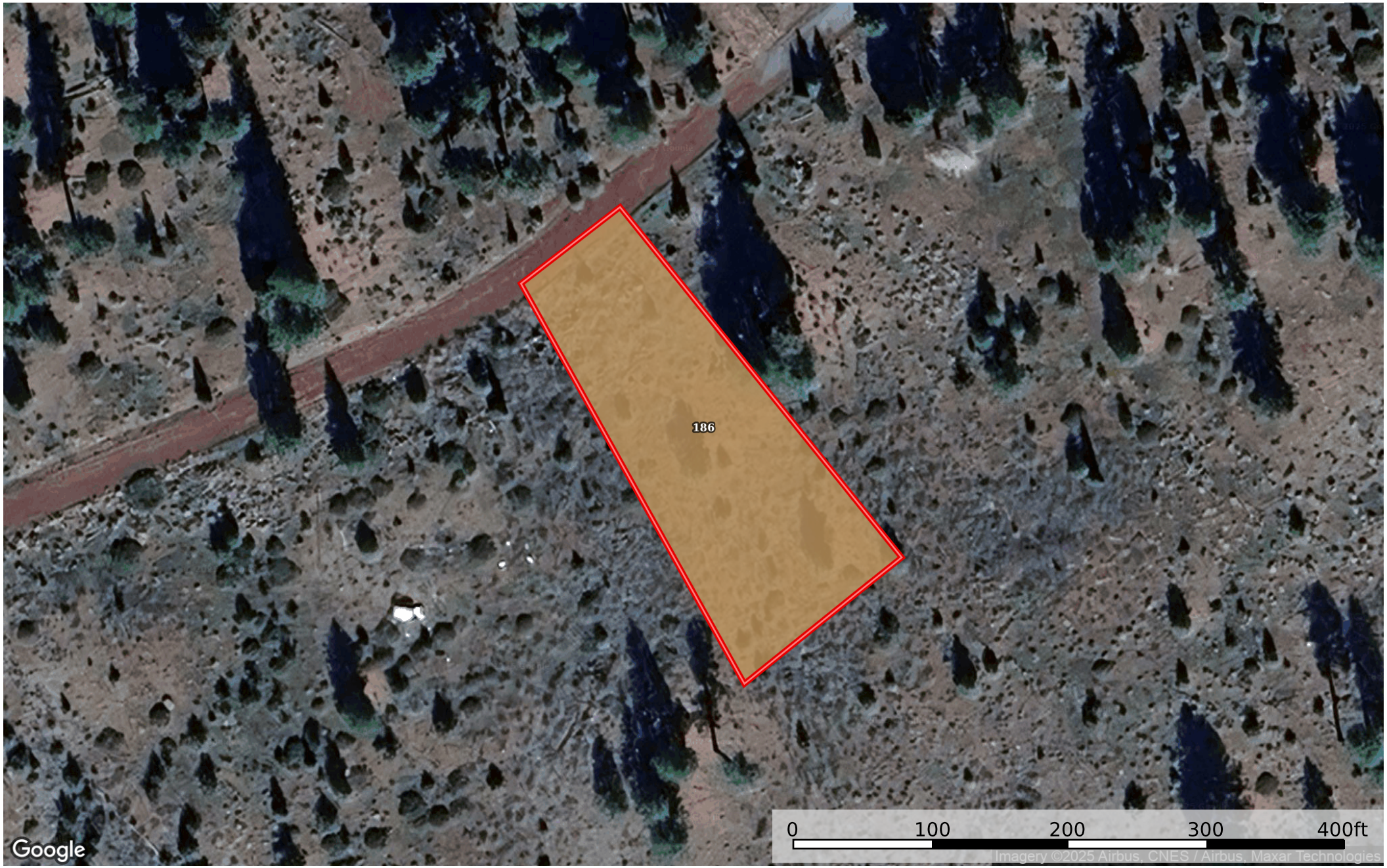



0.89 Acre Alturas, Modoc County, CA 038-242-003-000  
Modoc County, California, 0.89 AC +/-



 Boundary

Boundary 0.89 ac

SOIL CODE	SOIL DESCRIPTION	ACRES	%	CPI	NCCPI	CAP
186	Hermit-Canyoncreek complex, 2 to 15 percent slopes	0.89	100	0	8	6e
TOTALS		0.89(*)	100%	-	8.0	6

(\*) Total acres may differ in the second decimal compared to the sum of each acreage soil. This is due to a round error because we only show the acres of each soil with two decimal.

