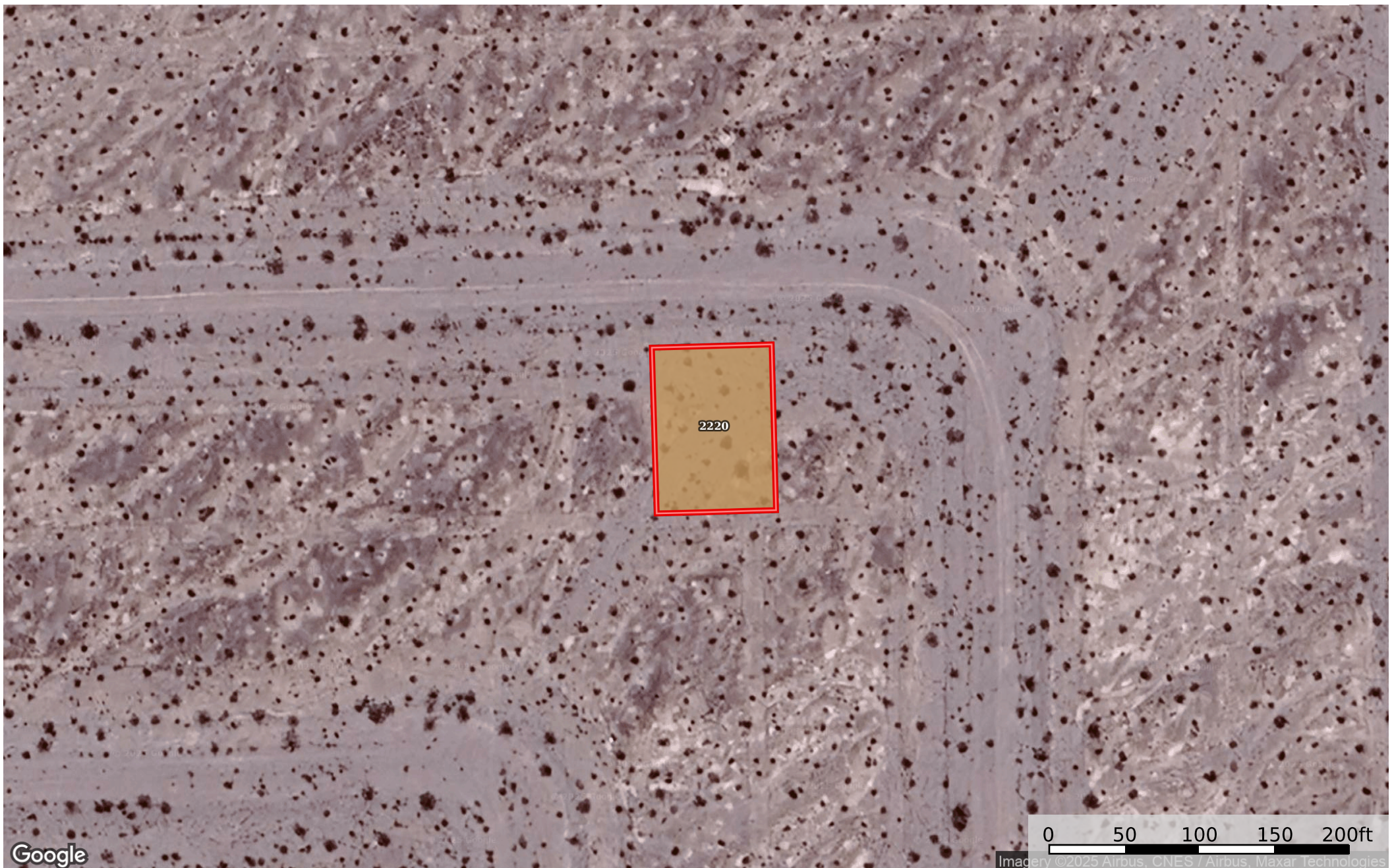


0.20 Acre Pahrump, Nye County, NV 030-083-03
Nye County, Nevada, 0.2 AC +/-




Google

0 50 100 150 200ft

Imagery ©2025 Airbus, CNES / Airbus, Maxar Technologies

 Boundary

 The information contained herein was obtained from sources deemed to be reliable. Land id™ Services makes no warranties or guarantees as to the completeness or accuracy thereof.

|  Boundary 0.2 ac

SOIL CODE	SOIL DESCRIPTION	ACRES	%	CPI	NCCPI	CAP
2220	Canoto-Arizo complex, 2 to 4 percent slopes	0.2	100	0	3	7s
TOTALS		0.2(*)	100%	-	3.0	7

(*) Total acres may differ in the second decimal compared to the sum of each acreage soil. This is due to a round error because we only show the acres of each soil with two decimal.

