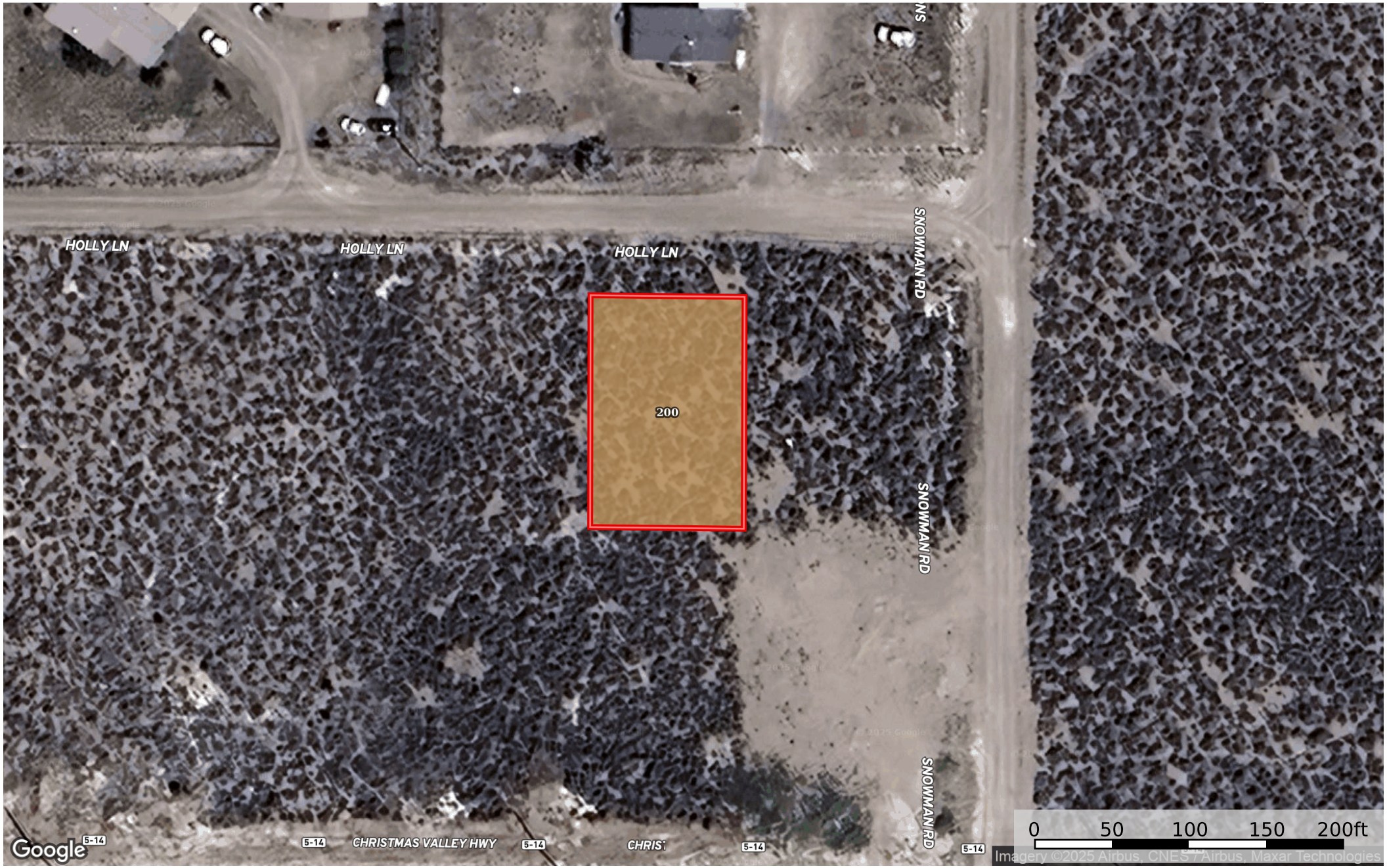


0.34 Acre Christmas Valley, Lake County, OR 5245  
Lake County, Oregon, 0.34 AC +/-



Google 5-14

5-14 CHRISTMAS VALLEY HWY 5-14 CHRIS 5-14

0 50 100 150 200ft  
Imagery ©2025 Airbus, CNES/Airbus, Maxar Technologies

Boundary

id. The information contained herein was obtained from sources deemed to be reliable. Land id™ Services makes no warranties or guarantees as to the completeness or accuracy thereof.



Boundary 0.34 ac

SOIL CODE	SOIL DESCRIPTION	ACRES	%	CPI	NCCPI	CAP
200	Abert ashy loamy sand, 0 to 2 percent slopes	0.34	100.0	0	2	6s
TOTALS		0.34(*)	100%	-	2.0	6.0

(\*) Total acres may differ in the second decimal compared to the sum of each acreage soil. This is due to a round error because we only show the acres of each soil with two decimal.

