



0.55 acre in New Mexico!

\$999 down payment \$129/month

An aerial photograph of a rugged, mountainous landscape. The terrain is characterized by dark, rocky hills and valleys, with sparse, scrubby vegetation. Several dirt roads and paths are visible, winding through the terrain. In the foreground, there are some buildings and structures, possibly a farm or a small settlement. The overall scene is remote and secluded.

Property Highlights

- Remote Location
- Peaceful and Quiet
- Private, secluded location



0.55-ACRE IN NEW MEXICO

Otero County

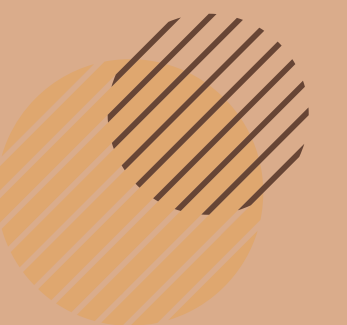
OPTION A:

Discounted Cash Price

OPTION B:

Owner Financing

**\$129/month
for 72 months!**



Nearby Attractions



Apache Point Observatory
20 miles away from property

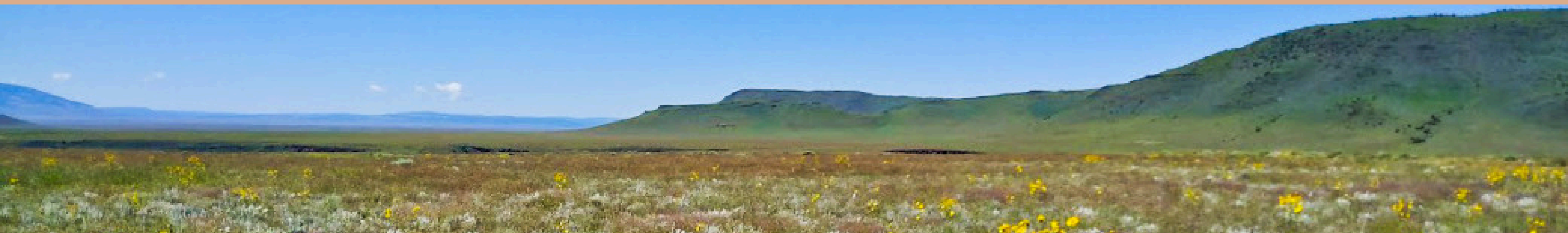
Cathey canyon
20 miles away from property



Riparian Nature Trail
70 miles away from property

Interested or have questions?

Contact us today!



682-382-9719



sales@lifetimelandusa.com

