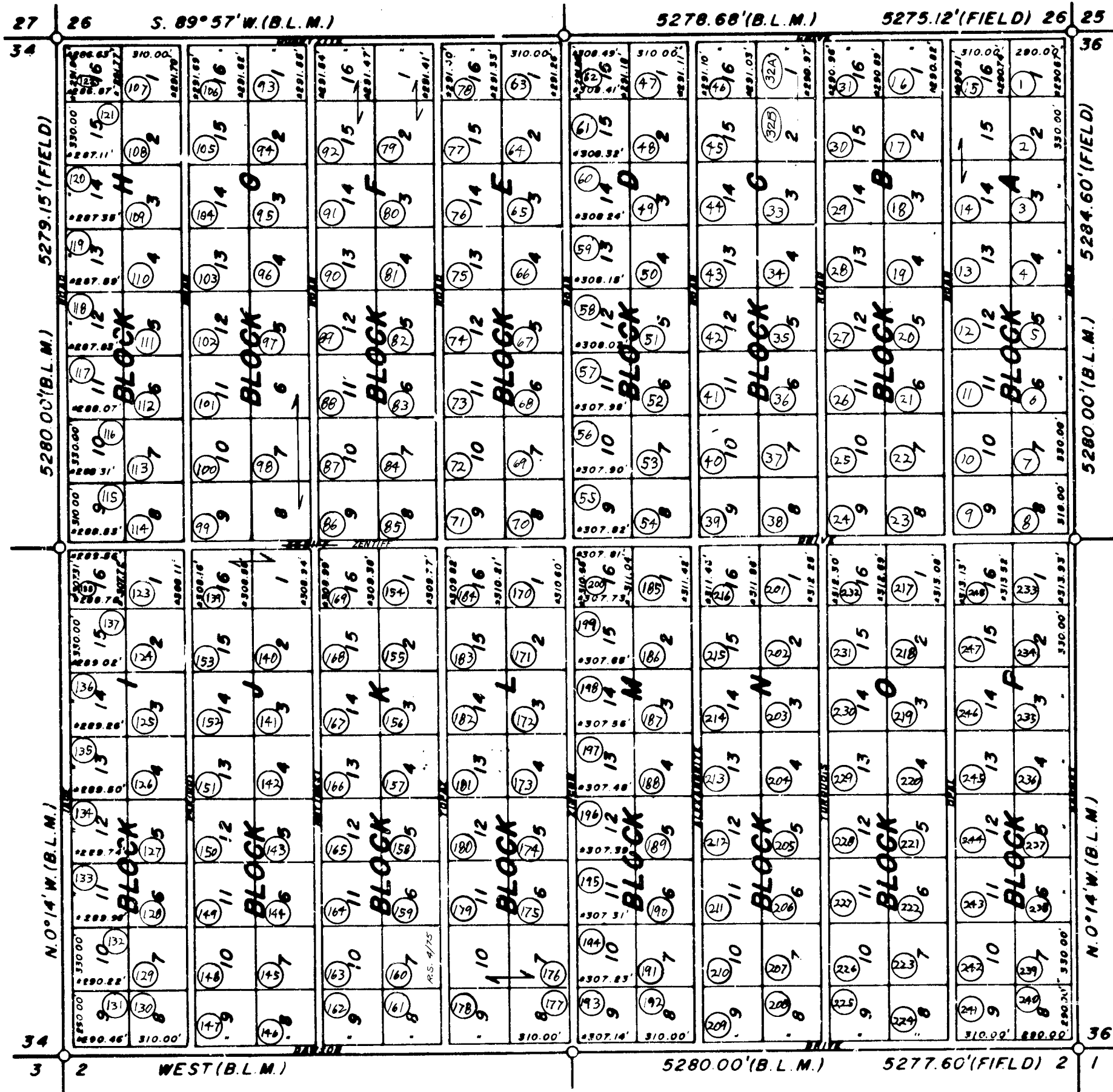


TOWNSHIP 20N RANGE 19W
SECTION 35

GOLDEN VALLEY RANCHOS
UNIT 21

MAP 11

Code 1630
Code



SCALE 1" = 600'
OFFICIAL STREET NAMES
PER RES. P.F.Z 05-201
JAN 6, 1986

MOHAVE COUNTY ASSESSOR

20N-19W-35
NOV. 17, 1989