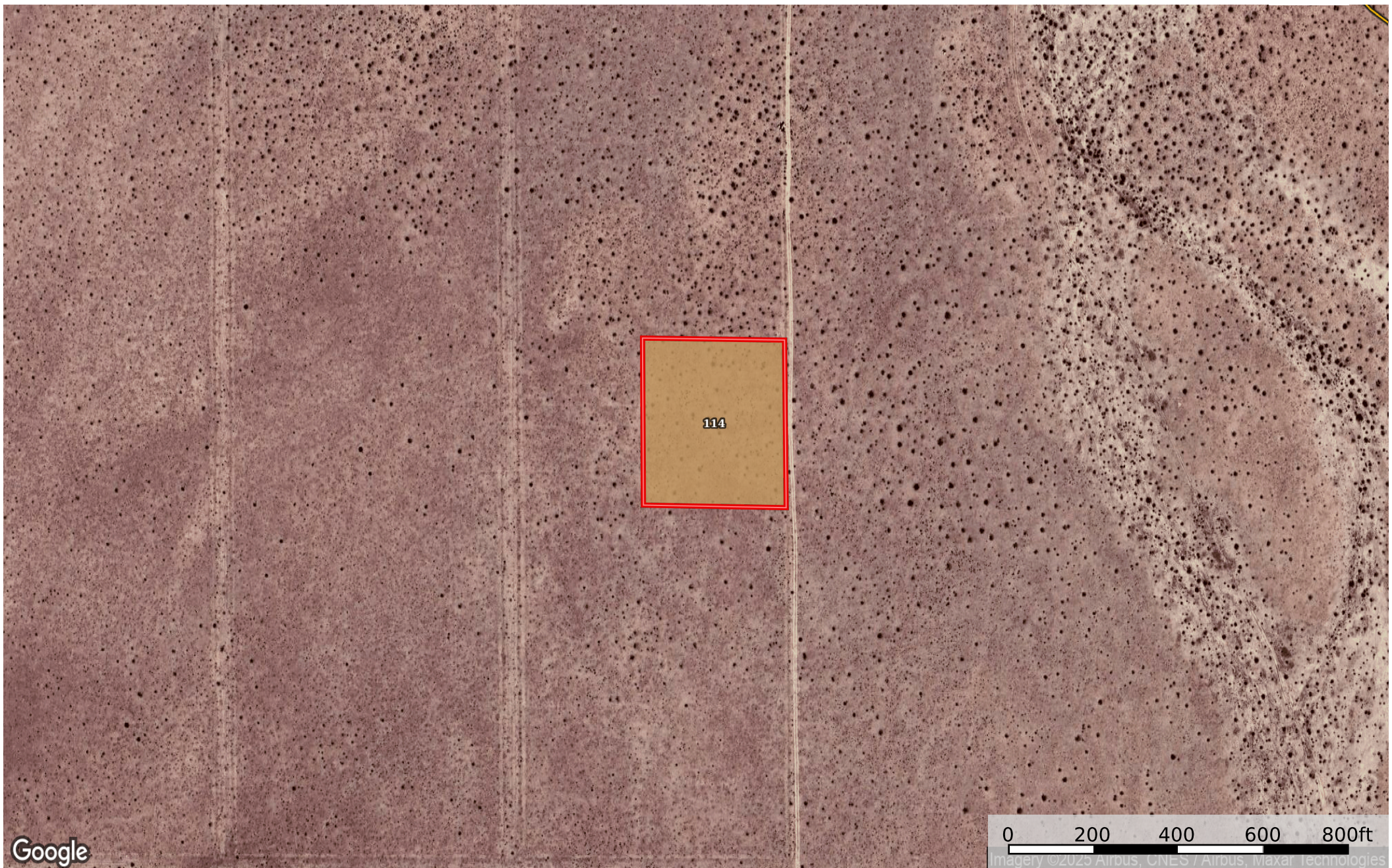


2.50 Acres Edwards, Kern County, CA 233-090-21-00-6
Kern County, California, 2.5 AC +/-



Google



 Boundary

Boundary 2.56 ac

SOIL CODE	SOIL DESCRIPTION	ACRES	%	CPI	NCCPI	CAP
114	Cajon loamy sand, 0 to 5 percent slopes	2.56	100	0	5	7e
TOTALS		2.56(*)	100%	-	5.0	7

(*) Total acres may differ in the second decimal compared to the sum of each acreage soil. This is due to a round error because we only show the acres of each soil with two decimal.

