

A paved road winding through a dense forest of green trees. The road is asphalt and curves gently to the right. The trees are lush and green, creating a canopy overhead. The sky is visible through the branches. The overall scene is peaceful and scenic.

0.22 acres in peaceful Arkansas!
\$100 down payment \$120/month

Property Highlights

- Peaceful and Quiet
- Good road access
- Lake nearby
- -Private, secluded location

Nearby Attractions



Crown Lake Pier

3.2 miles away from property

**Horseshoe Bend Garden Club Park
2.1 miles away from property**

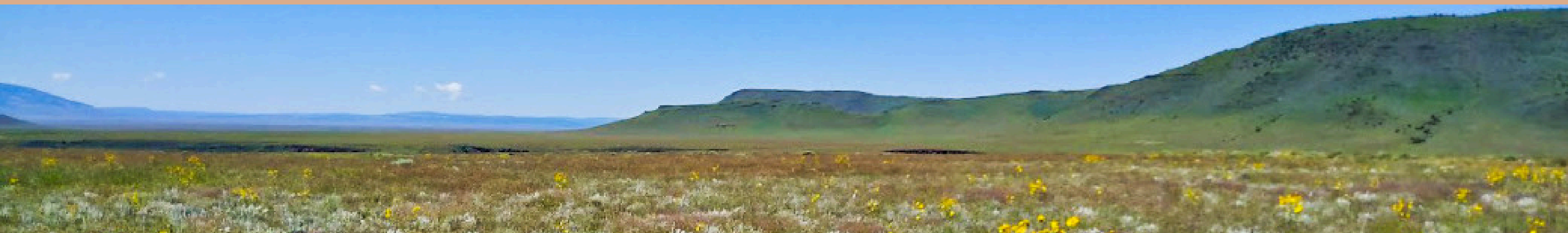


Diamond Lake

6 miles away from property

Interested or have questions?

Contact us today!



682-382-9719



sales@lifetimelandusa.com

