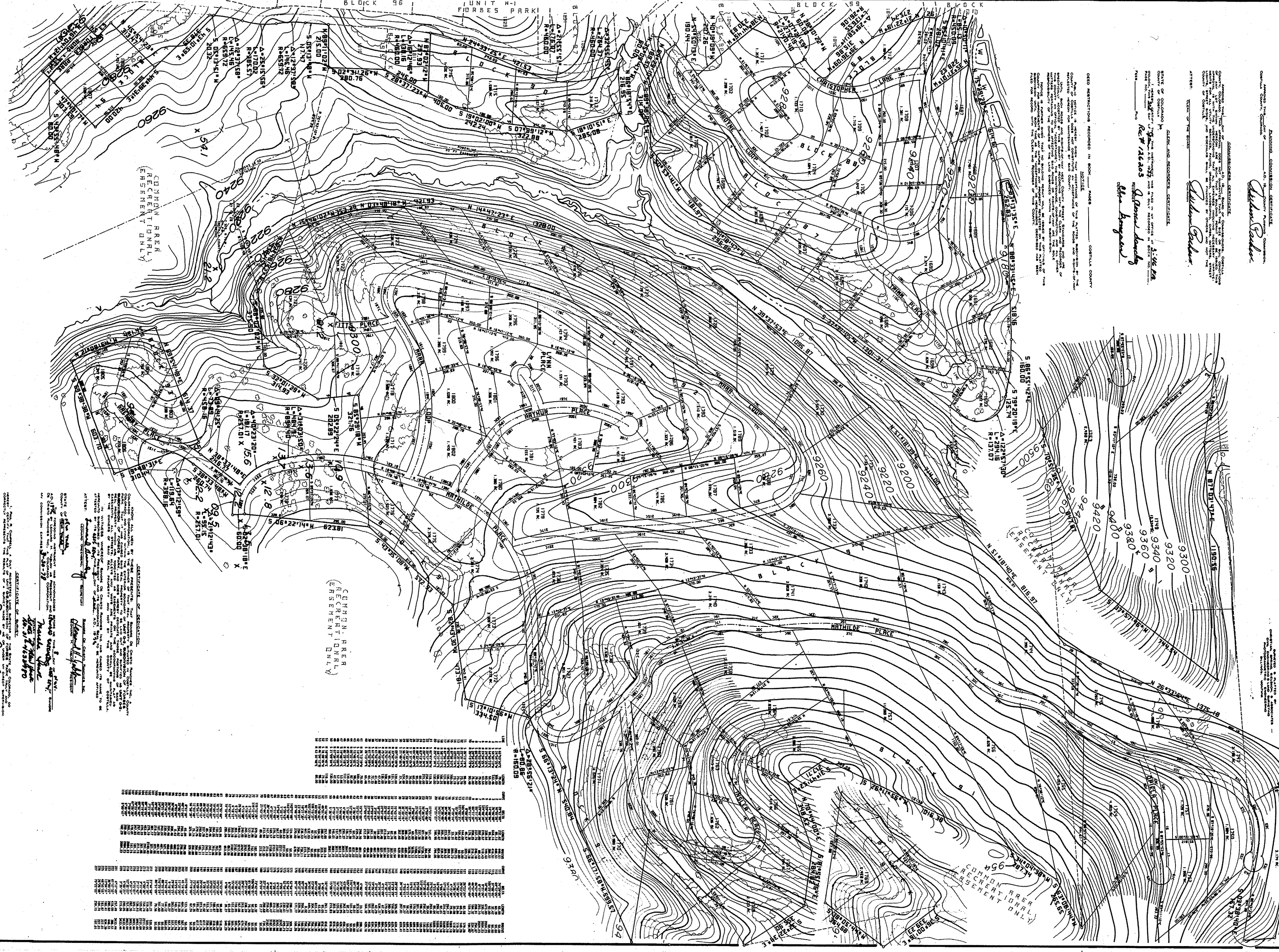
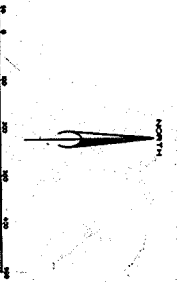


- NOTES:
1. FROM VARIOUS SOURCES, INCLUDING THE U.S. GEOLOGICAL SURVEY, THE FOLLOWING DATA HAS BEEN OBTAINED:
  2. ALL RIGHTS OF WAY FROM WATER RIGHTS ARE SHOWN BY DASHED LINES.
  3. ALL RIGHTS OF WAY FROM WATER RIGHTS ARE SHOWN BY DASHED LINES.
  4. ALL RIGHTS OF WAY FROM WATER RIGHTS ARE SHOWN BY DASHED LINES.
  5. ALL RIGHTS OF WAY FROM WATER RIGHTS ARE SHOWN BY DASHED LINES.
  6. ALL RIGHTS OF WAY FROM WATER RIGHTS ARE SHOWN BY DASHED LINES.
  7. ALL RIGHTS OF WAY FROM WATER RIGHTS ARE SHOWN BY DASHED LINES.

PLANNING, CONSULTING, ENGINEERING  
 CONSULTING ENGINEERS  
 1500 W. 10TH AVENUE, DENVER, COLORADO  
 ATTORNEYS: *William G. Baker*  
 STATE OF COLORADO  
 COUNTY OF COSTILLA  
 REC'D 1/26/24  
 FILED 1/26/24  
*John S. Langley*  
*John S. Langley*

UNIT G-4, SUBDIVISION  
 OF  
**FORBES PARK**  
 SITUATED IN A PORTION OF THE  
 SANBORN DE COASTILLA COUNTY, COLORADO



COMMUNAL FOREST  
 (RECREATIONAL RESERVE ONLY)

COMMUNAL FOREST  
 (RECREATIONAL RESERVE ONLY)

COMMUNAL FOREST  
 (RECREATIONAL RESERVE ONLY)

COMMUNAL FOREST  
 (RECREATIONAL RESERVE ONLY)

COMMUNAL FOREST  
 (RECREATIONAL RESERVE ONLY)