

NOTE
The bearings shown on this survey were calculated from a random traverse using field angles and a single magnetic observation. The bearings may differ from previous surveys due to magnetic declination even though the property lines are the same.

This survey subject to all rights of way and easements as shown or on record. Acreage calculation based on dimension as shown on plot.

**SURVEY FOR
GEORGIA MARBLE COMPANY**

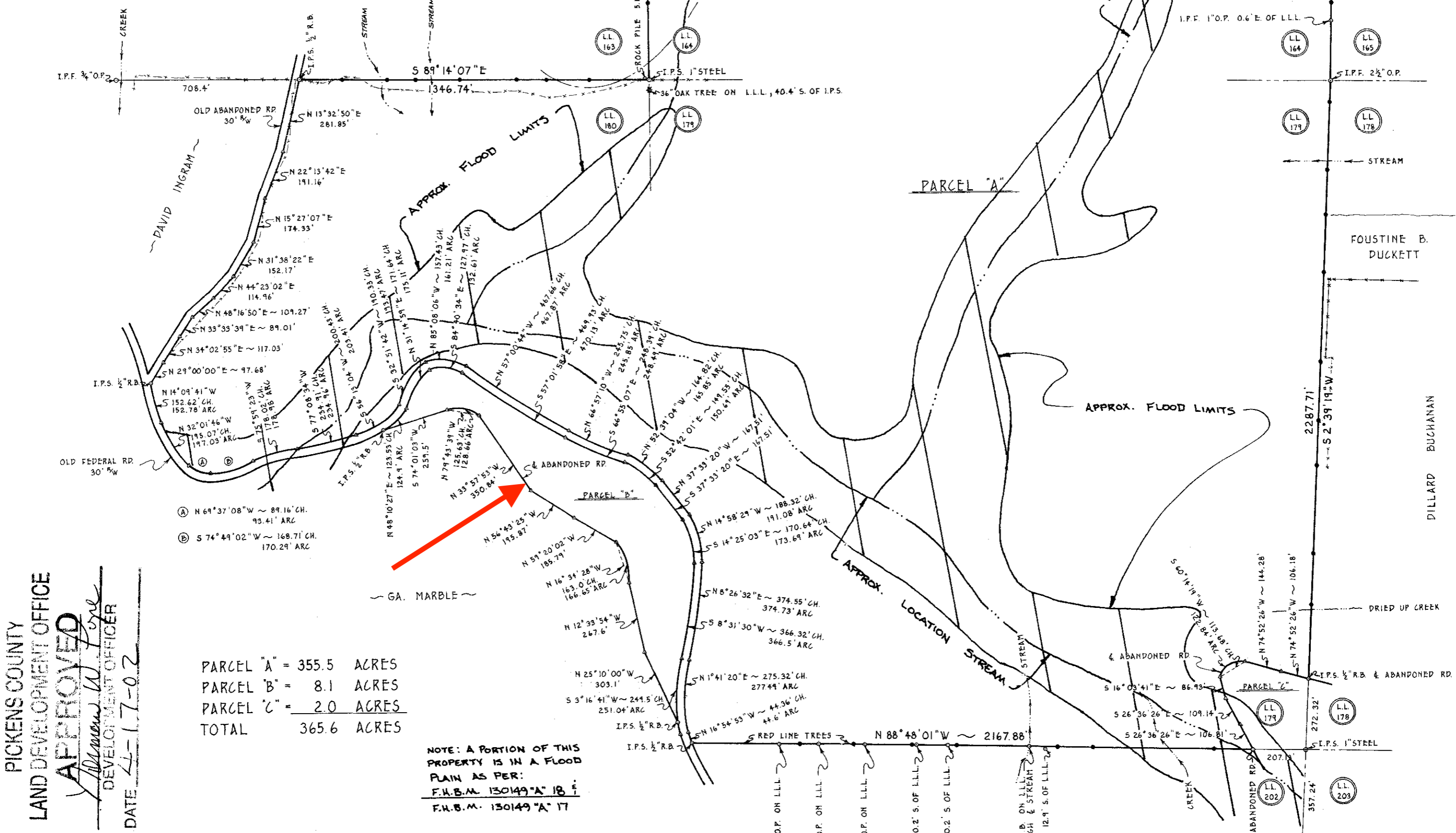
LAND LOTS 164, 179, 180 ~ 4TH DISTRICT ~ 2ND SECTION
PICKENS COUNTY, GA. AUGUST, 1979

SCALE: 1" = 200'

"The field data upon which this map or plan is based is a closure traverse of one foot in 350,000 feet and an angular error of 0.00" per angle point, and was adjusted using COLLINGS rule."

"This map or plan has been calculated for closure and is found to be accurate within one foot in 350,000 feet."

PICKENS COUNTY FILED FOR RECORD C.
THE 18 DAY OF April 2002
BY M. RECORDED THIS 25 DAY OF
April 2002 BOOK NO. 44 PAGE 217
JOYCE GANTRELL CSC



PICKENS COUNTY
LAND DEVELOPMENT OFFICE
APPROVED
John W. Ford
DEVELOPMENT OFFICER
DATE 4-17-02

PARCEL "A" = 355.5 ACRES
PARCEL "B" = 8.1 ACRES
PARCEL "C" = 2.0 ACRES
TOTAL 365.6 ACRES

NOTE: A PORTION OF THIS PROPERTY IS IN A FLOOD PLAIN AS PER: F.H.B.M. 130149 "A" 18 & F.H.B.M. 130149 "A" 17



In my opinion, this plat is a correct representation of the facts plotted and has been prepared in conformity with the minimum standards and requirements of law.
James E. Bishop
LAND SURVEYOR



- ABBREVIATIONS**
- 1" = HIGH PIN SET
 - 1" = IRON PIN FOUND
 - 1" = BENTONITE MARK
 - 1" = IRON STEEL BAR
 - 1" = CROWN PIPE
 - 1" = CONCRETE FOUNDATION
 - 1" = METAL ROD
 - 1" = QUILTED TOWER LINE
 - 1" = LAND LOT
 - 1" = LAND LOT CORNER
 - 1" = CENTER LINE
 - 1" = ABANDONING FENCE LINE

NOTE
This survey performed using a K & E Parsons 30" Transit and JCI level. A computer used for all calculations.

NOTE
This survey performed using a HP 9810A Texas Instruments computer used for all calculations.

