

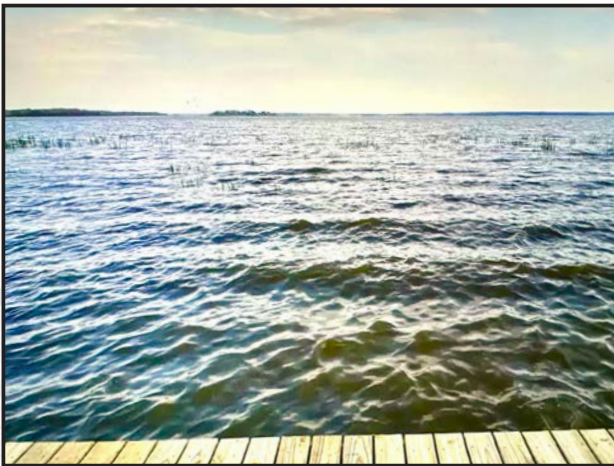
EXPEDITION POINT



EXPEDITION POINT
ON THE NATCHEZ TRACE



**Our first house building on
Neptune Shore**



**The seawall along
Neptune Shore**



**View of Expedition Point
from the water**

EXPEDITION POINT

Welcome to Expedition Point, Madison County's newest residential lakeside development. Situated on 123 acres of forested land at the corner of the Natchez Trace Parkway and Highway 43. Expedition Point is an island of calm surrounded by tens of thousands of acres of water and parkland. Nearby and seemingly far away, Expedition Point is only fifteen minutes from schools, offices, and shopping in Madison, Ridgeland, and Jackson.

Taking guidance from its unique natural setting and historic location, Expedition Point was designed to fit lightly on the land to preserve almost half of the entire site as untouched natural green space. No matter where you build in Expedition Point you will be close to nature and a wide variety of outdoor activities.

Expedition Point's beautiful parklike setting and 60 feet of elevation on the lake offer an ample variety of lot types consisting of: shoreline, waterview, inland forest, and even opportunities to build right on the water. Due to Expedition Point's purposeful design and delightful topography, almost 70% of our lots will have water views.

Expedition Point will offer a variety of home sizes to meet your needs. Whether you are just getting started in life, growing your family, or an empty nester looking to downsize without sacrificing quality, Expedition Point may be the place for you.

Existing amenities on or adjacent to Expedition Point include:

- Boat ramps
- Fishing, boating, and water sports on 33,000 acres of water
- Natchez Trace pedestrian and equestrian trail (21 miles)
- Sporting clays, archery and range at Turcotte – just across Hwy 43
- Cycling on the Natchez Trace Parkway
- Over 10,000 acres of hunting land managed by the PRVWSD
- Natchez Trace National Scenic Parkway (permanent green buffer)

Amenities to be built at Expedition Point during Phase 1 and 2 include:

- Proposed clubhouse and pool
- Playground
- Multi-sport playing field (baseball, soccer, and football)
- Fishing piers
- Outdoor amphitheater
- Walking and biking trails
- Improving the boat landing



Expedition Point Home Types will include:

- Homes from 2,000 sf
- Houses from 2,750 sf
- Large Houses from 3,500 sf
- Estate Homes from 4,250 sf



LOT & HOME TYPES



Homes from 2,000 sf



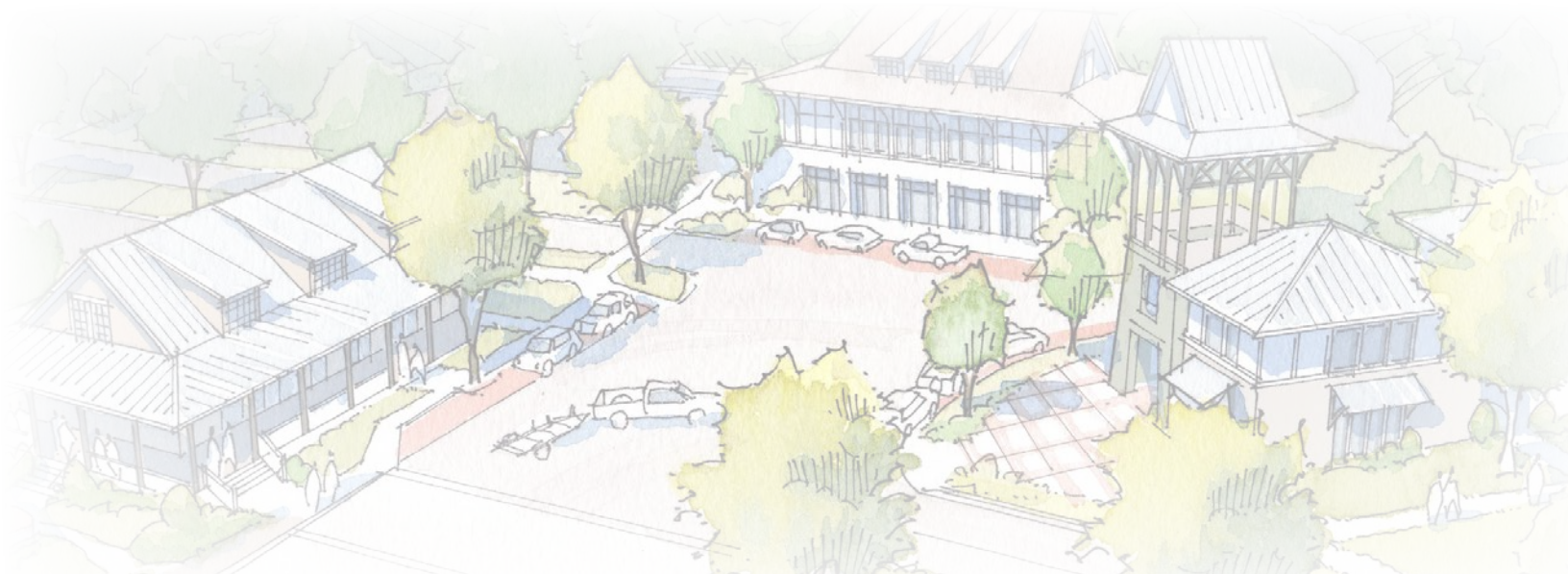
Houses from 2,750 sf



Large Houses from 3,500 sf



Homes from 4,250 sf





EXPEDITION
POINT

www.expeditionpoint.com

Please Contact Lindsey Gennaro cell- 601-695-2667,
email- lindseygennaro@gmail.com

Lot #52-
\$73,500



Ball Field

Gate

Gate

Gate

EXPEDITION
POINT

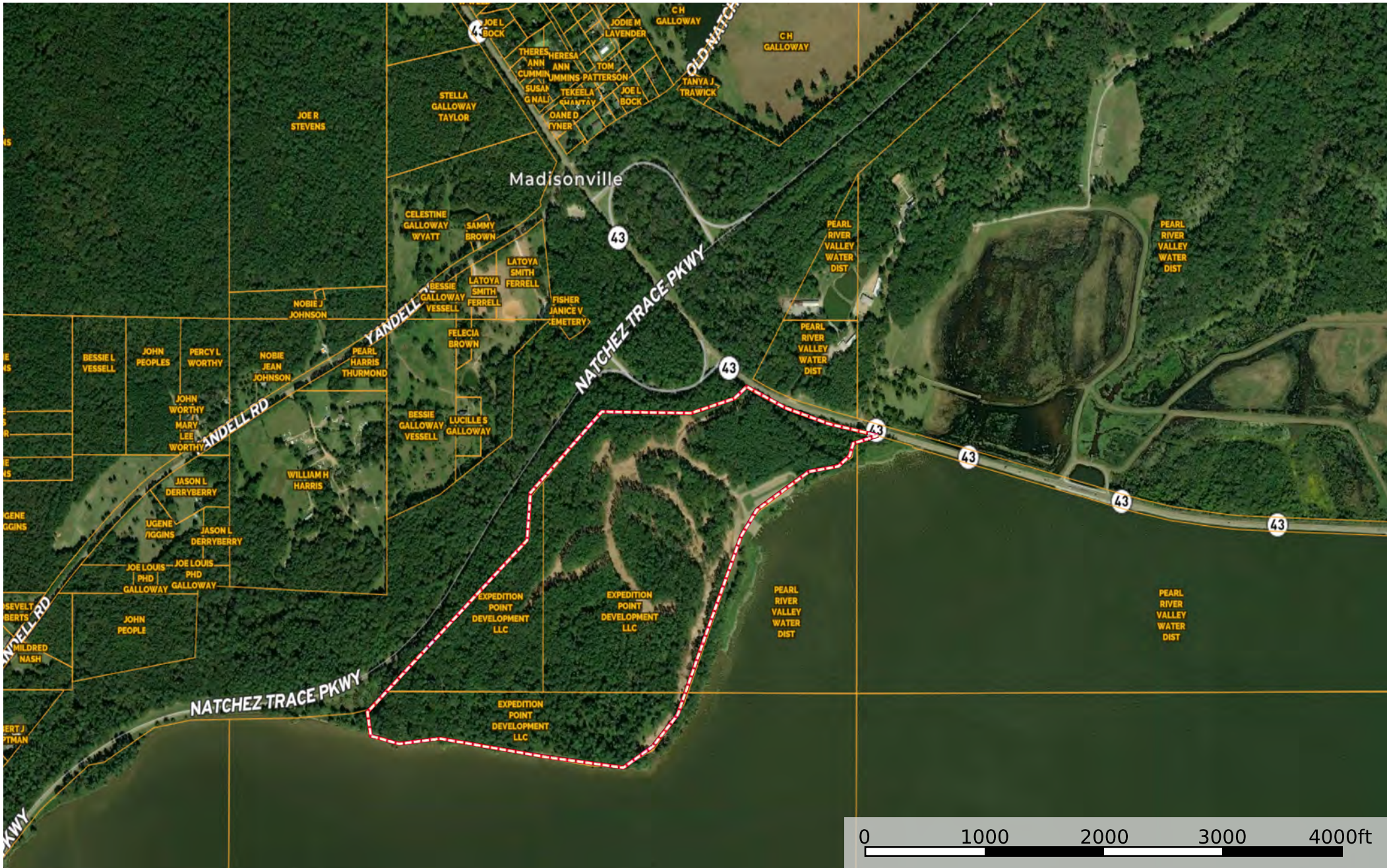
LEGEND


- Phase 1
- Future Phase
- Common Areas

GRAPHIC SCALE

1" = 100'

1" = 200'



 Boundary

Mississippi, AC +/-



Boundary