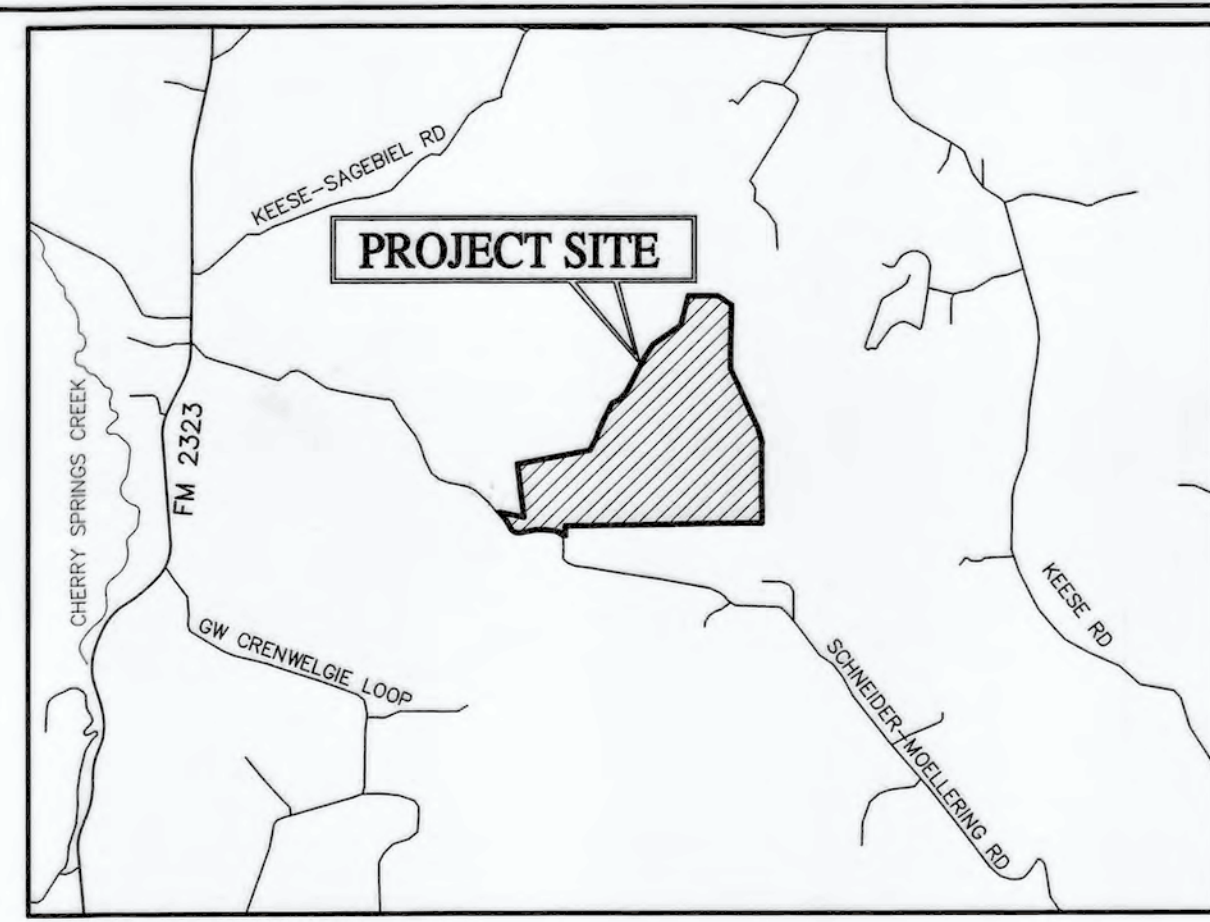
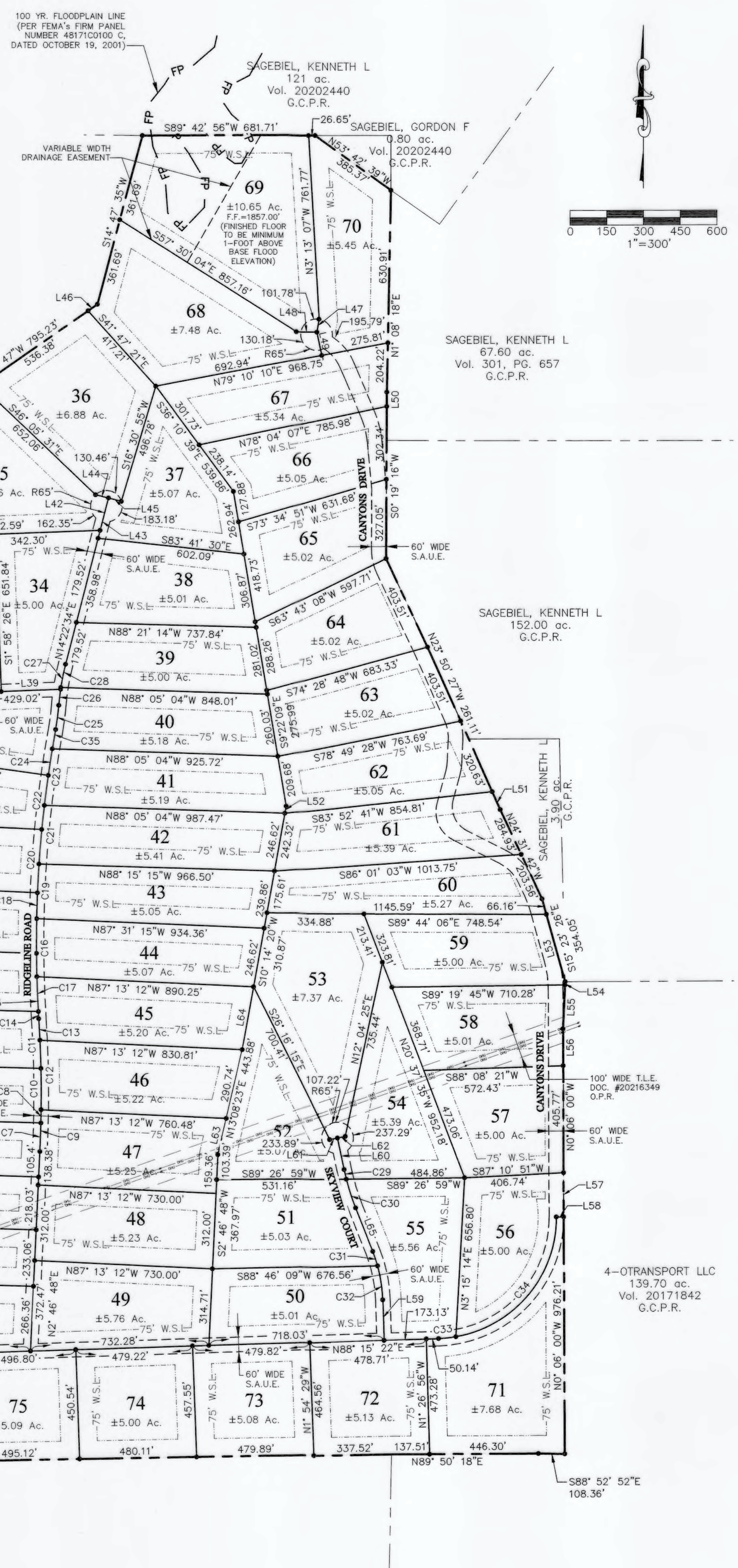


LINE #	LENGTH	DIRECTION
L1	91.50'	N44°06'21"W
L2	187.06'	N73°50'57"W
L3	97.76'	N84°48'19"W
L4	177.61'	N84°48'19"W
L5	187.69'	S89°44'29"W
L6	24.77'	S79°54'50"W
L7	368.29'	S79°54'50"W
L8	108.12'	N84°33'50"W
L9	80.07'	N52°36'36"W
L10	70.43'	N31°36'21"W
L11	267.85'	N29°30'23"W
L12	66.57'	S35°26'02"E
L13	191.00'	S88°15'22"W
L14	60.10'	S88°15'22"W
L15	210.00'	N9°26'07"E
L16	352.83'	N9°26'07"E
L17	192.51'	N9°26'07"E
L18	21.62'	N9°26'07"E
L19	286.40'	N26°12'31"W
L20	52.47'	N18°59'13"E
L21	177.19'	N18°59'13"E
L22	84.59'	N60°02'10"E
L23	169.38'	N60°02'10"E
L24	17.95'	N27°30'24"W
L25	218.20'	N38°34'49"E
L26	101.22'	N27°28'46"E
L27	217.27'	S47°32'33"E
L28	216.60'	S14°3'32"E
L29	73.50'	S14°3'32"E
L30	107.62'	S7°48'25"W
L31	117.05'	N89°01'20"W
L32	54.54'	S70°14'34"E
L33	55.39'	S68°52'40"E

LINE #	LENGTH	DIRECTION
L34	21.75'	N64°50'11"E
L35	95.18'	S19°45'26"W
L36	133.50'	S19°45'26"W
L37	116.59'	S19°45'26"W
L38	31.07'	N7°59'43"E
L39	243.76'	N87°58'22"E
L40	185.26'	N87°58'22"E
L41	98.57'	S91°6'50"E
L42	171.75'	N14°22'34"E
L43	138.32'	S14°22'34"W
L44	54.82'	S75°37'26"E
L45	54.82'	S75°37'26"E
L46	46.88'	N54°57'47"E
L47	54.39'	N9°27'28"E
L48	84.95'	N89°35'53"W
L49	98.41'	S11°44'05"E
L50	58.92'	N01°9'16"E
L51	81.43'	S23°50'27"E
L52	29.68'	N101°4'20"E
L53	267.89'	N15°23'26"W
L54	13.73'	N2°40'01"E
L55	182.33'	S2°40'01"W
L56	152.67'	S0°06'00"E
L57	182.30'	S0°06'00"E
L58	30.00'	N89°54'00"E
L59	167.19'	N1°44'38"W
L60	132.87'	N11°45'27"W
L61	32.50'	N78°14'33"E
L62	32.50'	N78°14'33"E
L63	153.14'	N13°08'23"E
L64	265.24'	N101°4'20"E
L102	628.07'	N84°56'47"W
L65	193.36'	N21°14'38"W

CURVE #	ARC LENGTH	RADIUS	DELTA	CHORD	CHORD LENGTH
C1	101.78	150.00'	38°52'42"	S72° 18' 18"E	101.78'
C2	163.10	150.00'	62°18'03"	S21° 42' 55"E	163.10'
C3	48.90	997.44'	2°48'33"	S1° 20' 21"E	48.90'
C4	127.65	997.44'	7°19'57"	S1° 55' 20"W	127.65'
C5	325.40	997.44'	18°41'30"	S10° 24' 41"W	325.40'
C6	246.66	997.44'	14°10'07"	S12° 40' 22"W	246.66'
C7	117.56	5000.00'	1°20'50"	N2° 06' 23"E	117.56'
C8	54.09	5000.00'	0°37'11"	N1° 07' 22"E	54.09'
C9	171.66	5000.00'	1°58'01"	N1° 47' 47"E	171.66'
C10	170.19	5000.00'	1°57'01"	N0° 09' 44"W	170.19'
C11	205.28	5000.00'	2°21'08"	N2° 18' 49"W	205.28'
C12	286.61	5000.00'	3°17'03"	N0° 49' 45"W	286.61'
C13	88.86	5000.00'	1°01'06"	N2° 58' 50"W	88.86'
C14	30.15	5000.00'	0°20'44"	S3° 19' 01"E	30.15'
C15	241.40	5000.00'	2°45'58"	S1° 45' 40"E	241.40'
C16	239.96	5095.29'	2°41'54"	S0° 07' 34"E	239.96'
C17	145.18	5000.00'	1°39'49"	S2° 18' 44"E	145.18'

CURVE #	ARC LENGTH	RADIUS	DELTA	CHORD	CHORD LENGTH
C18	250.14	5000.00'	2°51'59"	S1° 03' 19"W	250.14'
C19	225.31	5144.06'	2°30'34"	S2° 34' 55"W	225.31'
C20	261.96	5000.00'	3°00'07"	S3° 59' 22"W	261.96'
C21	243.07	5000.00'	2°47'07"	S5° 14' 38"W	243.07'
C22	225.54	5000.00'	2°35'04"	S6° 46' 57"W	225.54'
C23	236.35	5000.00'	2°42'30"	S7° 59' 28"W	236.35'
C24	80.92	5000.00'	0°55'38"	S9° 48' 30"W	80.92'
C25	101.12	1000.00'	5°47'37"	N7° 22' 31"E	101.12'
C26	66.64	1000.00'	3°49'05"	S6° 23' 15"W	66.64'
C27	106.11	1000.00'	6°04'46"	S11° 20' 11"W	106.11'
C28	98.17	1000.00'	5°37'29"	S11° 33' 50"W	98.17'
C29	40.96	1000.00'	2°20'49"	S12° 55' 52"E	40.96'
C30	124.60	1000.00'	7°08'22"	S17° 40' 27"E	124.60'
C31	62.41	600.00'	5°57'34"	N18° 15' 51"W	62.41'
C32	141.80	600.00'	13°32'28"	N8° 30' 51"W	141.80'
C33	71.36	500.00'	8°10'40"	N84° 10' 01"E	71.36'
C34	699.69	500.00'	80°10'41"	N39° 59' 21"E	699.69'



LEGEND

- PROPERTY BOUNDARY
- - - ADJACENT PROPERTY BOUNDARY
- EXISTING OVERHEAD UTILITY LINE
- - - PROPOSED LOT LINE
- - - PROPOSED EASEMENT
- FP 100-YEAR FLOODPLAIN LINE (PER FIRM)
- - - PROPOSED SETBACK LINE
- S.A.U.E. SHARED ACCESS & UTILITY EASEMENT
- U.E. UTILITY EASEMENT
- T.L.E. TRANSMISSION LINE EASEMENT
- W.S.L. WATER SETBACK LINE
- SET MAG NAIL

**A
FINAL PLAT
FOR**

THE CANYONS

437.36 acres

4776 SCHNEIDER-MOELLERING RD, FREDERICKSBURG, GILLESPIE COUNTY, TEXAS.

LANDSTAR HOLDINGS, LLC OWNER
CONTACT: PETE ELMER (704) 897-6850
200 NORTH HARBOR PLACE DRIVE SUITE G DAVIDSON, NC 28036 FAX: (704) 895-8751

VEI CONSULTING ENGINEERS ENGINEER
ENGINEERING CONTACT: KEVIN W. SPRAGGINS (830) 997-4744
507-D E. HIGHWAY ST. FREDERICKSBURG, TX 78624 FAX: (830) 997-6967
Texas Registration # F-165

MDS LAND SURVEYING
SURVEYOR CONTACT: JEFF BOERNER (830) 816-1818
874 HARPER ROAD # 104 KERRVILLE, TEXAS 78028 TBPLS FIRM NO. 10019600

FILE NO: 20107
DATE: 08/24/2021 SHEET: FP (1 OF 2)

