

ICHETUCKNEE RIVER ESTATES.

·FIRST ADDITION·

Situated in Section 27, Township 6 South, Range 15 East
Suwannee County, Florida.

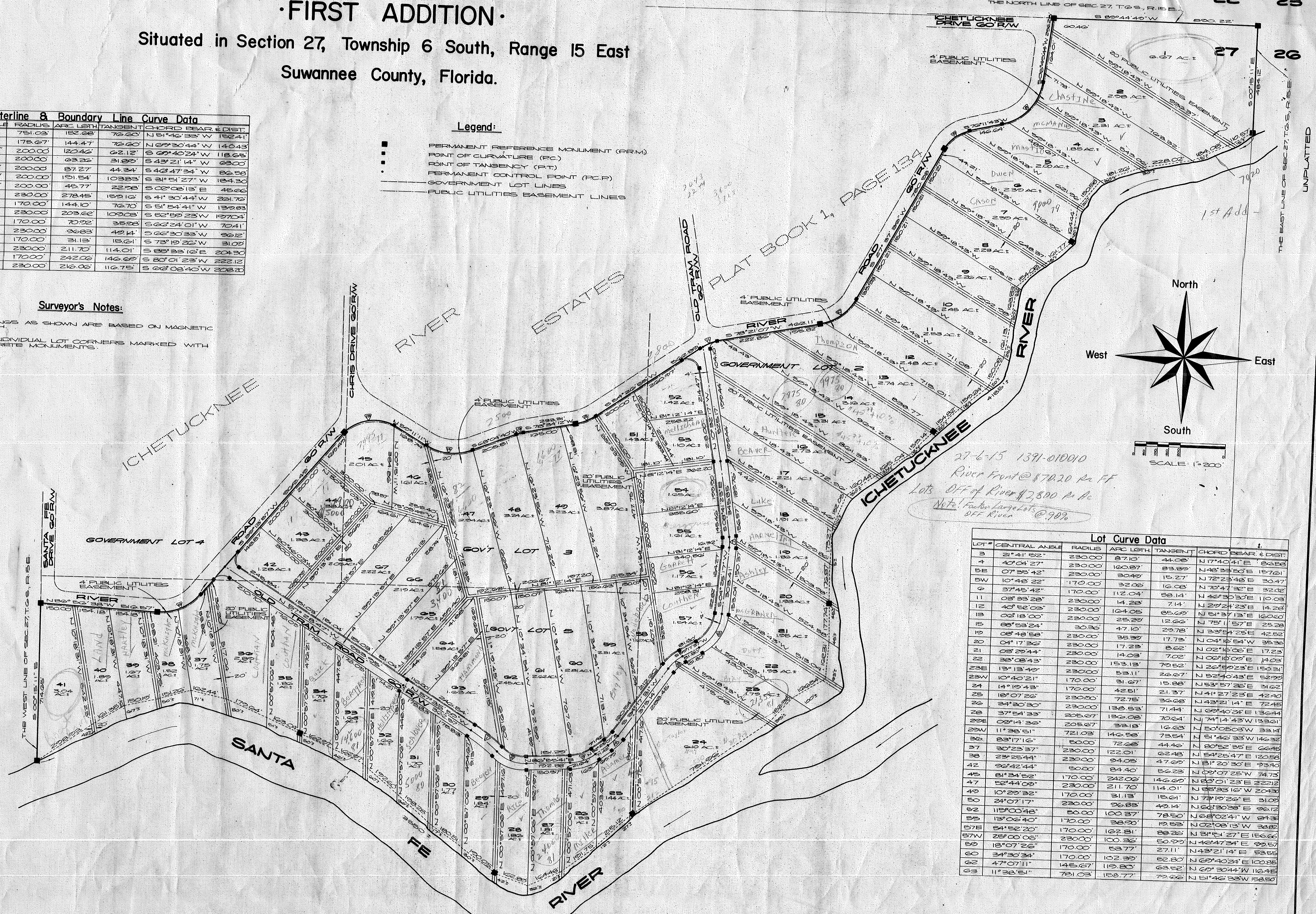
No.	CENT ANGLE	RADIUS	ARC LENGTH	TANGENT	CHORD	BEAR & DIST.
1	11°38'51"	751.03	152.68	76.60	N 51°46'33" W 152.41'	
2	47°07'11"	175.67	144.47	76.60	N 69°30'44" W 140.43'	
3	34°30'54"	200.00	120.46	62.12	S 69°40'24" W 118.65'	
4	18°07'22"	200.00	63.22	31.69	S 43°21'14" W 69.00'	
5	25°00'06"	200.00	87.27	44.24	S 46°47'34" W 66.56'	
6	54°52'20"	200.00	151.54	103.83	S 31°51'27" W 184.30'	
7	13°06'40"	200.00	45.77	22.58	S 02°08'13" E 45.66'	
8	69°21'59"	230.00	278.45	159.12	S 41°30'44" W 231.72'	
9	48°34'04"	170.00	144.10	73.70	S 55°54'41" W 139.04'	
10	50°43'28"	230.00	203.62	109.02	S 52°59'23" W 197.04'	
11	23°54'12"	170.00	70.92	35.98	S 63°24'01" W 70.41'	
12	24°07'17"	230.00	96.83	42.14	S 62°30'33" W 96.12'	
13	10°23'32"	170.00	31.13	15.61	S 73°19'22" W 31.02'	
14	52°44'09"	230.00	211.70	114.01	S 65°33'16" E 204.30'	
15	81°34'52"	170.00	242.06	146.69	S 80°01'23" W 222.12'	
16	53°49'25"	230.00	216.06	116.75	S 62°08'40" W 208.30'	

- Legend:**
- PERMANENT REFERENCE MONUMENT (PRM)
 - POINT OF CURVATURE (P.C.)
 - POINT OF TANGENCY (P.T.)
 - PERMANENT CONTROL POINT (P.C.P.)
 - GOVERNMENT LOT LINES
 - PUBLIC UTILITIES EASEMENT LINES

Surveyor's Notes:

(1) BEARINGS AS SHOWN ARE BASED ON MAGNETIC NORTH.

(2) ALL INDIVIDUAL LOT CORNERS MARKED WITH CONCRETE MONUMENTS.



27-6-15 1391-010010
River Front @ \$70.20 Per FF
Lots Off of River @ \$2,800 Per Ac
Note: Fraction Large Lots @ 90%OFF RIVER

LOT #	CENTRAL ANGLE	RADIUS	ARC LENGTH	TANGENT	CHORD	BEAR & DIST.
3	21°41'52"	230.00	87.10	44.08	N 17°40'41" E 162.62'	
4	40°04'27"	230.00	160.87	83.89	N 48°33'53" E 157.61'	
5E	07°55'42"	230.00	30.49	15.27	N 72°23'48" E 20.47'	
5W	10°48'22"	170.00	32.06	16.03	N 70°47'32" E 32.02'	
6	37°45'42"	170.00	112.04	58.14	N 46°35'30" E 110.03'	
11	03°33'28"	230.00	14.29	7.14	N 29°24'23" E 14.23'	
12	40°52'03"	230.00	164.05	85.69	N 51°37'13" E 160.60'	
13	03°18'00"	230.00	25.29	12.66	N 75°11'57" E 25.28'	
15	88°53'24"	30.36	47.10	29.78	N 23°54'25" E 42.52'	
19	08°48'58"	230.00	35.39	17.75	N 04°16'54" W 35.32'	
20	04°17'32"	230.00	17.23	8.62	N 02°16'05" E 17.23'	
21	05°23'44"	230.00	14.03	7.02	N 06°10'09" E 14.03'	
22	38°08'43"	230.00	153.13	79.52	N 22°49'23" E 153.21'	
23E	13°13'49"	230.00	53.11	26.67	N 52°40'43" E 52.99'	
24	14°15'43"	170.00	31.67	15.88	N 53°57'26" E 31.62'	
25	18°07'26"	170.00	42.51	21.37	N 41°27'23" E 42.40'	
26	34°20'20"	230.00	138.53	71.44	N 62°40'24" E 136.44'	
28	37°54'23"	205.07	132.08	70.64	N 74°14'43" W 133.61'	
29E	09°14'26"	205.07	33.18	16.59	N 50°05'03" W 33.14'	
29W	11°38'51"	721.03	146.58	73.54	N 51°46'33" W 146.32'	
36	83°17'16"	50.00	72.68	44.46	N 80°52'35" E 66.45'	
37	30°23'37"	230.00	123.01	62.48	N 54°25'47" E 120.58'	
38	23°25'44"	230.00	94.05	47.69	N 81°20'30" E 93.40'	
42	26°42'44"	50.00	84.40	56.23	N 09°07'25" W 74.73'	
45	81°34'52"	170.00	242.06	146.69	N 80°01'23" E 222.12'	
47	52°44'09"	230.00	211.70	114.01	N 65°33'16" W 204.30'	
49	10°23'32"	170.00	31.13	15.61	N 73°19'22" E 31.02'	
50	24°07'17"	230.00	96.83	42.14	N 62°30'33" E 96.12'	
52	115°00'48"	50.00	100.37	38.90	N 68°02'41" W 84.38'	
53	13°06'40"	170.00	31.13	15.61	N 02°08'13" W 31.02'	
57E	54°52'20"	170.00	162.81	88.23	N 31°51'27" E 156.66'	
57W	25°00'06"	230.00	100.36	50.99	N 46°47'34" E 96.56'	
59	18°07'26"	170.00	53.77	27.11	N 43°21'14" E 53.58'	
60	34°30'34"	170.00	102.39	52.80	N 69°40'24" E 100.28'	
62	47°07'11"	145.67	119.80	63.52	N 69°30'44" W 116.45'	
63	11°38'51"	751.03	158.77	79.66	N 51°46'33" W 152.41'	