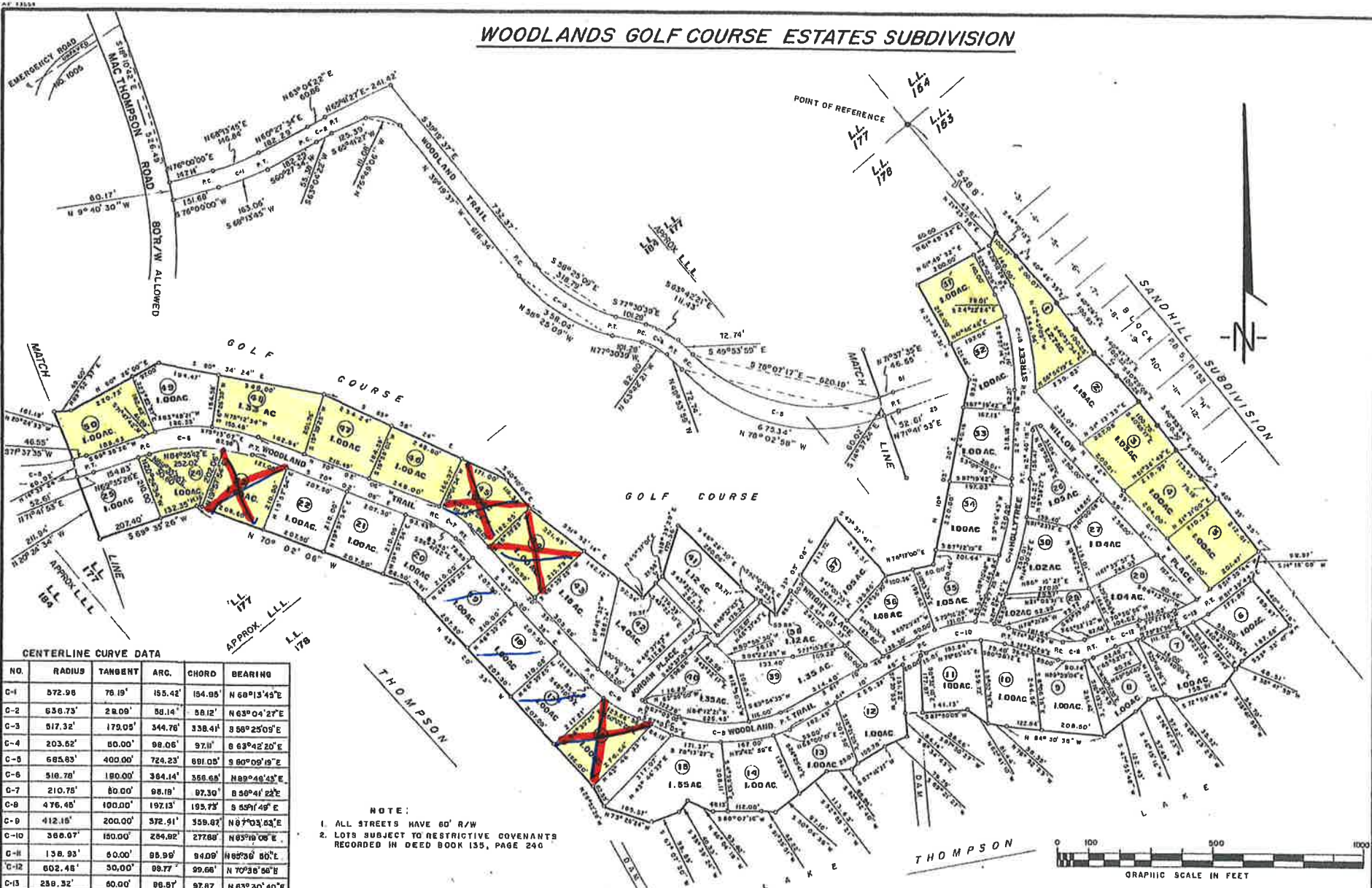


# WOODLANDS GOLF COURSE ESTATES SUBDIVISION



**CENTERLINE CURVE DATA**

NO.	RADIUS	TANGENT	ARC.	CHORD	BEARING
C-1	572.98	76.19'	155.42'	194.95'	N 68°13'45"E
C-2	636.73'	2.809'	86.14'	58.12'	N 63°04'27"E
C-3	517.32'	179.09'	344.76'	338.41'	S 58°25'09"E
C-4	203.62'	80.00'	98.06'	97.11'	S 63°42'20"E
C-5	685.83'	400.00'	724.23'	891.05'	S 60°09'19"E
C-6	516.78'	180.00'	364.14'	388.65'	N 89°46'45"E
C-7	210.76'	80.00'	98.19'	97.30'	S 56°41'22"E
C-8	476.46'	100.00'	197.13'	195.73'	S 59°14'49"E
C-9	412.15'	200.00'	372.91'	359.87'	N 87°03'03"E
C-10	366.07'	150.00'	284.82'	278.89'	N 83°19'06"E
C-11	138.93'	60.00'	88.99'	94.09'	N 88°08'10"E
C-12	602.48'	30.00'	88.77'	89.66'	N 70°38'08"W
C-13	288.32'	60.00'	98.87'	97.87'	N 83°20'40"E
C-14	1187.44'	200.00'	396.29'	394.45'	N 12°13'47"E
C-15	618.67'	170.64'	333.01'	329.00'	N 12°49'10"W

**NOTE:**  
 1. ALL STREETS HAVE 60' R/W  
 2. LOTS SUBJECT TO RESTRICTIVE COVENANTS RECORDED IN DEED BOOK 135, PAGE 240

- LEGEND:**
- = existing iron pipe
  - = iron pipe set
  - = fence
  - = not to scale
  - L.L. = land lot
  - L.L.L. = land lot line

**NOTE**  
 The field data upon which this map or plat is based has a closure precision of one foot in 38,506 feet, and an angular error of 2" per angle point, and was adjusted using compass rule.  
 This map or plat has been calculated for closure and is accurate within one foot in 10,000 feet.  
 The types of equipment used to obtain the measurements on this map or plat are as follows:  
 Sine measurement, E D M  
 angular measurement, TOPCON THEODOLITE



*T. Jerry Peacock, Sr.*  
 T. JERRY PEACOCK SR. GEORGIA REGISTERED LAND SURVEYOR NUMBER 2132

SUBDIVISION  
 FOR  
**CHARLES A. THOMPSON JR.**  
 LAND LOTS 184, 177, AND 178, 21<sup>ST</sup> LAND DISTRICT

BLECKLEY COUNTY, GEORGIA.

SCALE: 1" = 200'      DATE: APRIL 28, 1996

**T. JERRY PEACOCK SR. SURVEYING SERVICE**  
 COCHRAN, GEORGIA PHONE (912) 934-8325