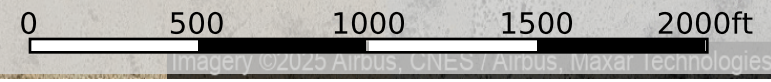
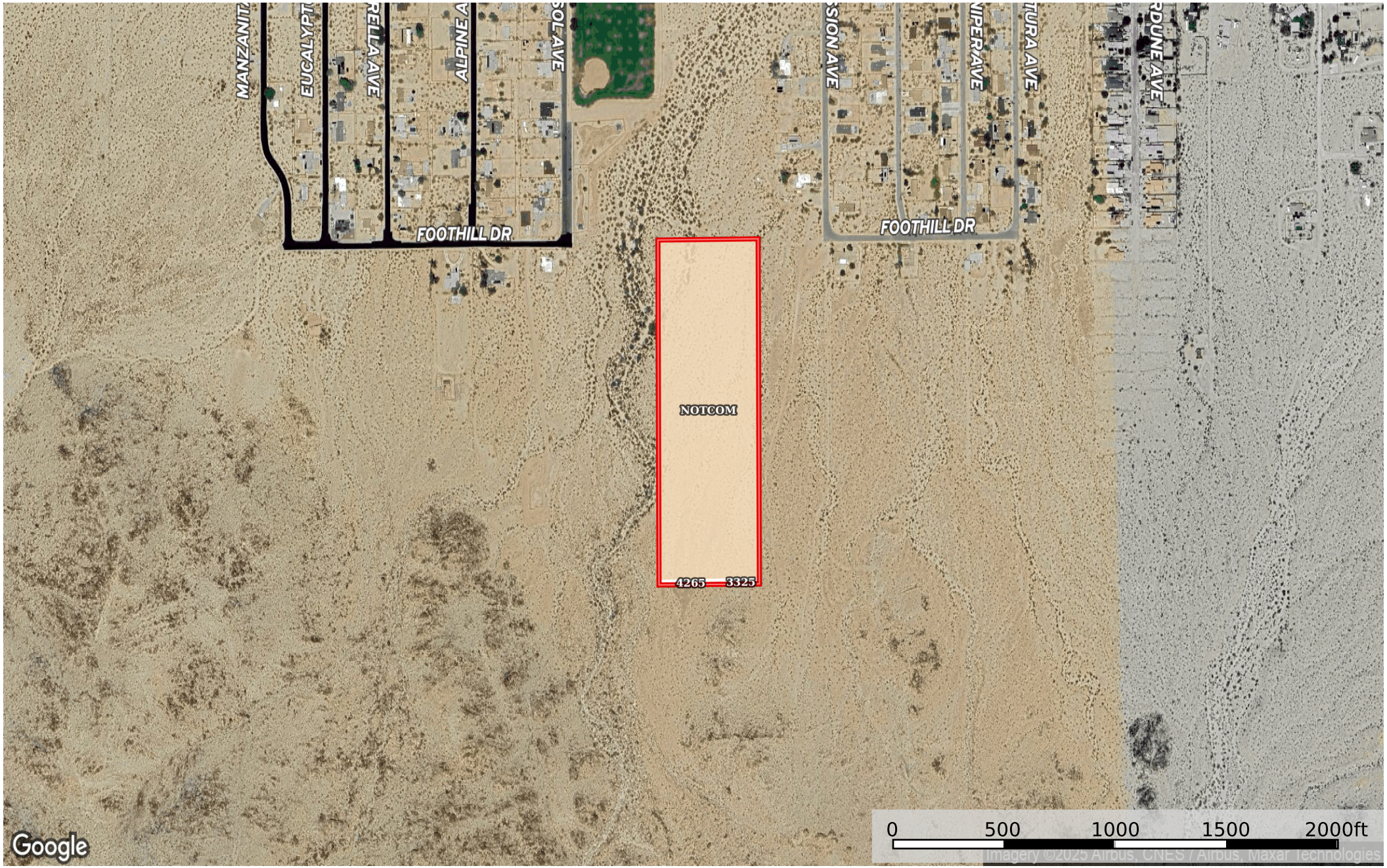


13.63 Acres Twentynine Palms, San Bernardino County,
San Bernardino County, California, 13.63 AC +/-



Google

 Boundary

Boundary 13.52 ac

SOIL CODE	SOIL DESCRIPTION	ACRES	%	CPI	NCCPI	CAP
NOTCOM	No Digital Data Available	13.36	98.74	0	-	-
4265	Werewolf gravelly sandy loam, 4 to 15 percent slopes	0.1	0.74	0	1	7e
3325	Ironped-Rock outcrop-Hexie complex, 30 to 60 percent slopes	0.06	0.44	0	0	7e
TOTALS		13.52(*)	100%	-	0.01	7.0

(*) Total acres may differ in the second decimal compared to the sum of each acreage soil. This is due to a round error because we only show the acres of each soil with two decimal.

