

SURVEY LEGEND

BLACK LINE: SURVEY PROPERTY LINE
 DASHED LINE: ADJACENT PROPERTY LINE
 SOLID LINE: UTILITY ALIGNMENT
 DOTTED LINE: EXISTING FENCE LINE
 THICK SOLID LINE: EXISTING FENCE LINE (ASBESTOS)
 THICK DASHED LINE: EXISTING FENCE LINE (LEAD)
 THICK SOLID LINE: EXISTING FENCE LINE (ZINC)
 THICK DASHED LINE: EXISTING FENCE LINE (ALUMINUM)
 THICK SOLID LINE: EXISTING FENCE LINE (STEEL)
 THICK DASHED LINE: EXISTING FENCE LINE (COPPER)
 THICK SOLID LINE: EXISTING FENCE LINE (BRASS)
 THICK DASHED LINE: EXISTING FENCE LINE (SILVER)
 THICK SOLID LINE: EXISTING FENCE LINE (GOLD)
 THICK DASHED LINE: EXISTING FENCE LINE (PLATINUM)

1/4" IRON ROD FOUND FOR CORNER
 1/2" IRON ROD FOUND FOR CORNER
 3/4" IRON ROD FOUND FOR CORNER
 1" IRON ROD FOUND FOR CORNER
 1 1/4" IRON ROD FOUND FOR CORNER
 1 1/2" IRON ROD FOUND FOR CORNER
 1 3/4" IRON ROD FOUND FOR CORNER
 2" IRON ROD FOUND FOR CORNER
 2 1/2" IRON ROD FOUND FOR CORNER
 3" IRON ROD FOUND FOR CORNER
 3 1/2" IRON ROD FOUND FOR CORNER
 4" IRON ROD FOUND FOR CORNER
 4 1/2" IRON ROD FOUND FOR CORNER
 5" IRON ROD FOUND FOR CORNER
 5 1/2" IRON ROD FOUND FOR CORNER
 6" IRON ROD FOUND FOR CORNER
 6 1/2" IRON ROD FOUND FOR CORNER
 7" IRON ROD FOUND FOR CORNER
 7 1/2" IRON ROD FOUND FOR CORNER
 8" IRON ROD FOUND FOR CORNER
 8 1/2" IRON ROD FOUND FOR CORNER
 9" IRON ROD FOUND FOR CORNER
 9 1/2" IRON ROD FOUND FOR CORNER
 10" IRON ROD FOUND FOR CORNER
 10 1/2" IRON ROD FOUND FOR CORNER
 11" IRON ROD FOUND FOR CORNER
 11 1/2" IRON ROD FOUND FOR CORNER
 12" IRON ROD FOUND FOR CORNER
 12 1/2" IRON ROD FOUND FOR CORNER
 13" IRON ROD FOUND FOR CORNER
 13 1/2" IRON ROD FOUND FOR CORNER
 14" IRON ROD FOUND FOR CORNER
 14 1/2" IRON ROD FOUND FOR CORNER
 15" IRON ROD FOUND FOR CORNER
 15 1/2" IRON ROD FOUND FOR CORNER
 16" IRON ROD FOUND FOR CORNER
 16 1/2" IRON ROD FOUND FOR CORNER
 17" IRON ROD FOUND FOR CORNER
 17 1/2" IRON ROD FOUND FOR CORNER
 18" IRON ROD FOUND FOR CORNER
 18 1/2" IRON ROD FOUND FOR CORNER
 19" IRON ROD FOUND FOR CORNER
 19 1/2" IRON ROD FOUND FOR CORNER
 20" IRON ROD FOUND FOR CORNER
 20 1/2" IRON ROD FOUND FOR CORNER
 21" IRON ROD FOUND FOR CORNER
 21 1/2" IRON ROD FOUND FOR CORNER
 22" IRON ROD FOUND FOR CORNER
 22 1/2" IRON ROD FOUND FOR CORNER
 23" IRON ROD FOUND FOR CORNER
 23 1/2" IRON ROD FOUND FOR CORNER
 24" IRON ROD FOUND FOR CORNER
 24 1/2" IRON ROD FOUND FOR CORNER
 25" IRON ROD FOUND FOR CORNER
 25 1/2" IRON ROD FOUND FOR CORNER
 26" IRON ROD FOUND FOR CORNER
 26 1/2" IRON ROD FOUND FOR CORNER
 27" IRON ROD FOUND FOR CORNER
 27 1/2" IRON ROD FOUND FOR CORNER
 28" IRON ROD FOUND FOR CORNER
 28 1/2" IRON ROD FOUND FOR CORNER
 29" IRON ROD FOUND FOR CORNER
 29 1/2" IRON ROD FOUND FOR CORNER
 30" IRON ROD FOUND FOR CORNER
 30 1/2" IRON ROD FOUND FOR CORNER
 31" IRON ROD FOUND FOR CORNER
 31 1/2" IRON ROD FOUND FOR CORNER
 32" IRON ROD FOUND FOR CORNER
 32 1/2" IRON ROD FOUND FOR CORNER
 33" IRON ROD FOUND FOR CORNER
 33 1/2" IRON ROD FOUND FOR CORNER
 34" IRON ROD FOUND FOR CORNER
 34 1/2" IRON ROD FOUND FOR CORNER
 35" IRON ROD FOUND FOR CORNER
 35 1/2" IRON ROD FOUND FOR CORNER
 36" IRON ROD FOUND FOR CORNER
 36 1/2" IRON ROD FOUND FOR CORNER
 37" IRON ROD FOUND FOR CORNER
 37 1/2" IRON ROD FOUND FOR CORNER
 38" IRON ROD FOUND FOR CORNER
 38 1/2" IRON ROD FOUND FOR CORNER
 39" IRON ROD FOUND FOR CORNER
 39 1/2" IRON ROD FOUND FOR CORNER
 40" IRON ROD FOUND FOR CORNER
 40 1/2" IRON ROD FOUND FOR CORNER
 41" IRON ROD FOUND FOR CORNER
 41 1/2" IRON ROD FOUND FOR CORNER
 42" IRON ROD FOUND FOR CORNER
 42 1/2" IRON ROD FOUND FOR CORNER
 43" IRON ROD FOUND FOR CORNER
 43 1/2" IRON ROD FOUND FOR CORNER
 44" IRON ROD FOUND FOR CORNER
 44 1/2" IRON ROD FOUND FOR CORNER
 45" IRON ROD FOUND FOR CORNER
 45 1/2" IRON ROD FOUND FOR CORNER
 46" IRON ROD FOUND FOR CORNER
 46 1/2" IRON ROD FOUND FOR CORNER
 47" IRON ROD FOUND FOR CORNER
 47 1/2" IRON ROD FOUND FOR CORNER
 48" IRON ROD FOUND FOR CORNER
 48 1/2" IRON ROD FOUND FOR CORNER
 49" IRON ROD FOUND FOR CORNER
 49 1/2" IRON ROD FOUND FOR CORNER
 50" IRON ROD FOUND FOR CORNER
 50 1/2" IRON ROD FOUND FOR CORNER
 51" IRON ROD FOUND FOR CORNER
 51 1/2" IRON ROD FOUND FOR CORNER
 52" IRON ROD FOUND FOR CORNER
 52 1/2" IRON ROD FOUND FOR CORNER
 53" IRON ROD FOUND FOR CORNER
 53 1/2" IRON ROD FOUND FOR CORNER
 54" IRON ROD FOUND FOR CORNER
 54 1/2" IRON ROD FOUND FOR CORNER
 55" IRON ROD FOUND FOR CORNER
 55 1/2" IRON ROD FOUND FOR CORNER
 56" IRON ROD FOUND FOR CORNER
 56 1/2" IRON ROD FOUND FOR CORNER
 57" IRON ROD FOUND FOR CORNER
 57 1/2" IRON ROD FOUND FOR CORNER
 58" IRON ROD FOUND FOR CORNER
 58 1/2" IRON ROD FOUND FOR CORNER
 59" IRON ROD FOUND FOR CORNER
 59 1/2" IRON ROD FOUND FOR CORNER
 60" IRON ROD FOUND FOR CORNER
 60 1/2" IRON ROD FOUND FOR CORNER
 61" IRON ROD FOUND FOR CORNER
 61 1/2" IRON ROD FOUND FOR CORNER
 62" IRON ROD FOUND FOR CORNER
 62 1/2" IRON ROD FOUND FOR CORNER
 63" IRON ROD FOUND FOR CORNER
 63 1/2" IRON ROD FOUND FOR CORNER
 64" IRON ROD FOUND FOR CORNER
 64 1/2" IRON ROD FOUND FOR CORNER
 65" IRON ROD FOUND FOR CORNER
 65 1/2" IRON ROD FOUND FOR CORNER
 66" IRON ROD FOUND FOR CORNER
 66 1/2" IRON ROD FOUND FOR CORNER
 67" IRON ROD FOUND FOR CORNER
 67 1/2" IRON ROD FOUND FOR CORNER
 68" IRON ROD FOUND FOR CORNER
 68 1/2" IRON ROD FOUND FOR CORNER
 69" IRON ROD FOUND FOR CORNER
 69 1/2" IRON ROD FOUND FOR CORNER
 70" IRON ROD FOUND FOR CORNER
 70 1/2" IRON ROD FOUND FOR CORNER
 71" IRON ROD FOUND FOR CORNER
 71 1/2" IRON ROD FOUND FOR CORNER
 72" IRON ROD FOUND FOR CORNER
 72 1/2" IRON ROD FOUND FOR CORNER
 73" IRON ROD FOUND FOR CORNER
 73 1/2" IRON ROD FOUND FOR CORNER
 74" IRON ROD FOUND FOR CORNER
 74 1/2" IRON ROD FOUND FOR CORNER
 75" IRON ROD FOUND FOR CORNER
 75 1/2" IRON ROD FOUND FOR CORNER
 76" IRON ROD FOUND FOR CORNER
 76 1/2" IRON ROD FOUND FOR CORNER
 77" IRON ROD FOUND FOR CORNER
 77 1/2" IRON ROD FOUND FOR CORNER
 78" IRON ROD FOUND FOR CORNER
 78 1/2" IRON ROD FOUND FOR CORNER
 79" IRON ROD FOUND FOR CORNER
 79 1/2" IRON ROD FOUND FOR CORNER
 80" IRON ROD FOUND FOR CORNER
 80 1/2" IRON ROD FOUND FOR CORNER
 81" IRON ROD FOUND FOR CORNER
 81 1/2" IRON ROD FOUND FOR CORNER
 82" IRON ROD FOUND FOR CORNER
 82 1/2" IRON ROD FOUND FOR CORNER
 83" IRON ROD FOUND FOR CORNER
 83 1/2" IRON ROD FOUND FOR CORNER
 84" IRON ROD FOUND FOR CORNER
 84 1/2" IRON ROD FOUND FOR CORNER
 85" IRON ROD FOUND FOR CORNER
 85 1/2" IRON ROD FOUND FOR CORNER
 86" IRON ROD FOUND FOR CORNER
 86 1/2" IRON ROD FOUND FOR CORNER
 87" IRON ROD FOUND FOR CORNER
 87 1/2" IRON ROD FOUND FOR CORNER
 88" IRON ROD FOUND FOR CORNER
 88 1/2" IRON ROD FOUND FOR CORNER
 89" IRON ROD FOUND FOR CORNER
 89 1/2" IRON ROD FOUND FOR CORNER
 90" IRON ROD FOUND FOR CORNER
 90 1/2" IRON ROD FOUND FOR CORNER
 91" IRON ROD FOUND FOR CORNER
 91 1/2" IRON ROD FOUND FOR CORNER
 92" IRON ROD FOUND FOR CORNER
 92 1/2" IRON ROD FOUND FOR CORNER
 93" IRON ROD FOUND FOR CORNER
 93 1/2" IRON ROD FOUND FOR CORNER
 94" IRON ROD FOUND FOR CORNER
 94 1/2" IRON ROD FOUND FOR CORNER
 95" IRON ROD FOUND FOR CORNER
 95 1/2" IRON ROD FOUND FOR CORNER
 96" IRON ROD FOUND FOR CORNER
 96 1/2" IRON ROD FOUND FOR CORNER
 97" IRON ROD FOUND FOR CORNER
 97 1/2" IRON ROD FOUND FOR CORNER
 98" IRON ROD FOUND FOR CORNER
 98 1/2" IRON ROD FOUND FOR CORNER
 99" IRON ROD FOUND FOR CORNER
 99 1/2" IRON ROD FOUND FOR CORNER
 100" IRON ROD FOUND FOR CORNER
 100 1/2" IRON ROD FOUND FOR CORNER

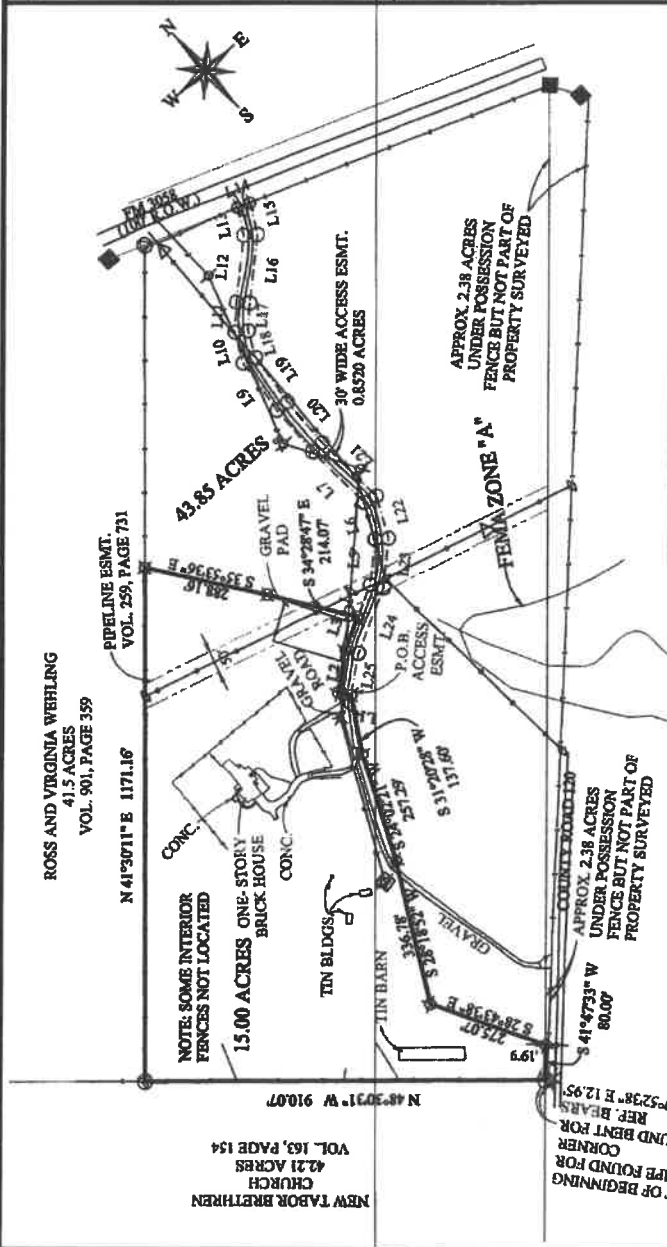
Survey Notes:
 1) The bearings of this survey are based on the Texas State Plane Coordinate System, Central Zone, NAD83(2011) EPOCH 2010, and boundary referenced to 1/2" iron rods found for and found as noted on the previous recorded deed.
 2) Drawing Scale is 1"=300'
 3) Drawn by: Adam Wallace
 4) Said lot does appear to be under the 100 year flood plain, as identified by the Federal Emergency Management Agency on Community Parcel No. 48041007332 effective date: 05-16-2012
 5) Adam Wallace, Registered Professional Land Surveyor No. 6132, do hereby certify that the above survey is a true and accurate representation of an actual on the ground survey performed on October 24, 2016, made under my supervision and that there are no encroachments or overlaps unless otherwise shown.

Adam Wallace
 Texas Registered Professional Land Surveyor, Number 6132

SURVEY PLAT

AREA: 13.00 ACRES
 ABSTRACT: BRADFORD HUGHES SURVEY, A-135
 STREET ADDRESS: 5100 FM 3058
 COUNTY: BURLINSON
 SURVEYED FOR: JOHN FREDRICKSON & WENDY FREDRICKSON
 TITLE CO: SOUTHLAND
 OWN: FC1807530

ATM Surveying
 P.O. Box 10513, College Station, TX 77840
 PHONE: (979)209-9291 email: Adam@ATMSurveying.com
 www.ATMSurveying.com - FIRM #101784-40



LINE	DISTANCE	BEARING	LINE	DISTANCE	BEARING
L1	30.00'	N 38°16'03" W	L13	63.50'	N 27°58'00" E
L2	96.61'	N 51°43'57" E	L14	30.27'	S 69°39'24" E
L3	79.16'	N 62°12'23" E	L15	72.81'	S 27°58'00" W
L4	78.38'	N 62°12'23" E	L16	155.99'	S 47°59'27" W
L5	104.42'	N 47°16'21" E	L17	63.49'	S 44°28'32" W
L6	87.60'	N 25°36'17" E	L18	63.58'	S 26°33'31" W
L7	167.07'	N 03°31'08" W	L19	125.55'	S 05°32'19" W
L8	124.98'	N 00°54'59" E	L20	122.60'	S 00°54'59" W
L9	132.32'	N 05°32'19" E	L21	173.77'	S 03°31'08" E
L10	73.87'	N 26°33'31" E	L22	101.14'	S 25°50'17" W
L11	69.14'	N 44°28'32" E	L23	114.03'	S 47°16'21" W
L12	151.62'	N 47°59'27" E	L24	158.72'	S 02°12'23" W
			L25	93.86'	S 51°42'57" W