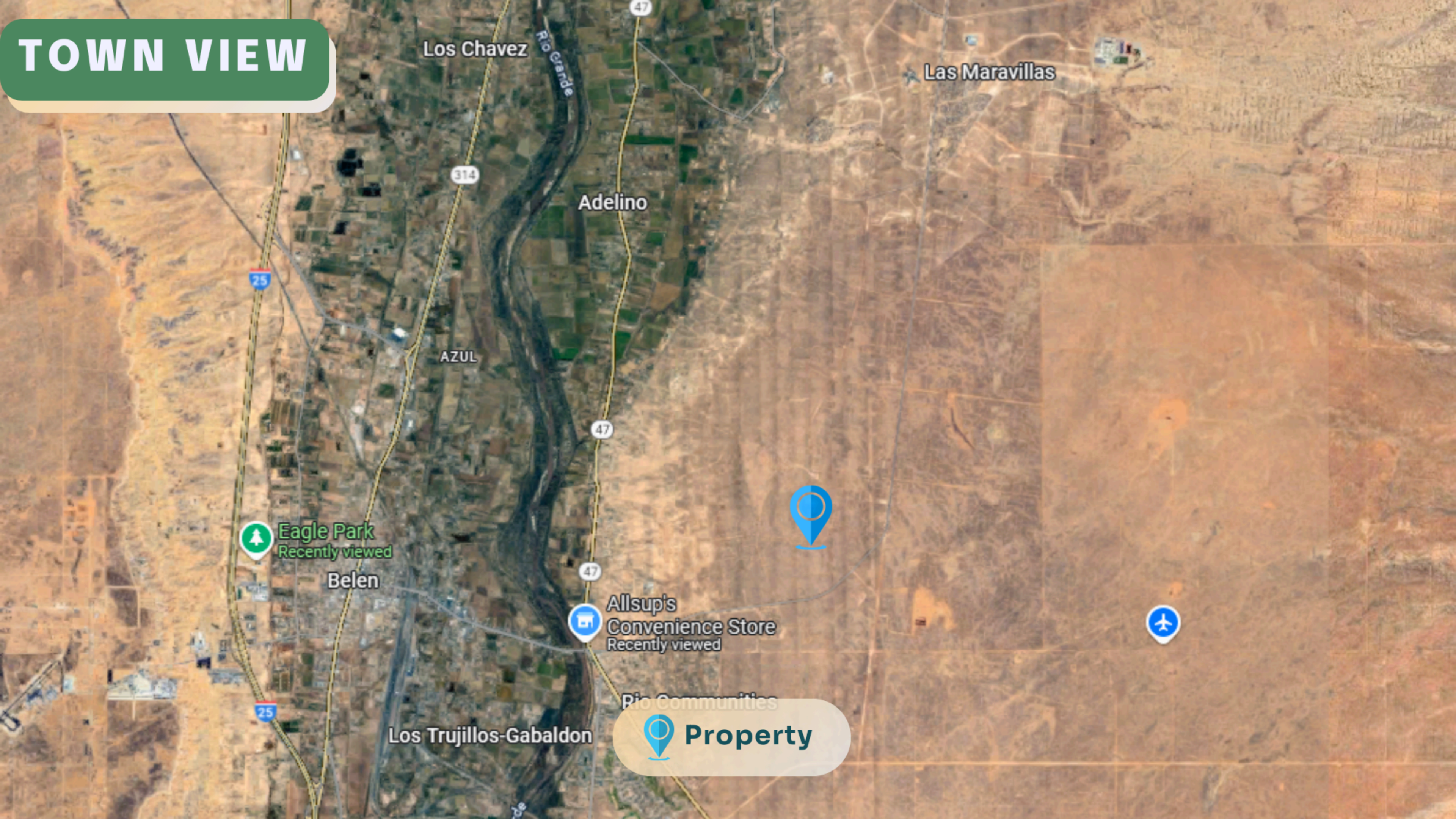


# TOWN VIEW



Los Chavez

Las Maravillas

Adelino

25

314

47

AZUL

47



Eagle Park  
Recently viewed

Belen

47




Allsup's  
Convenience Store  
Recently viewed



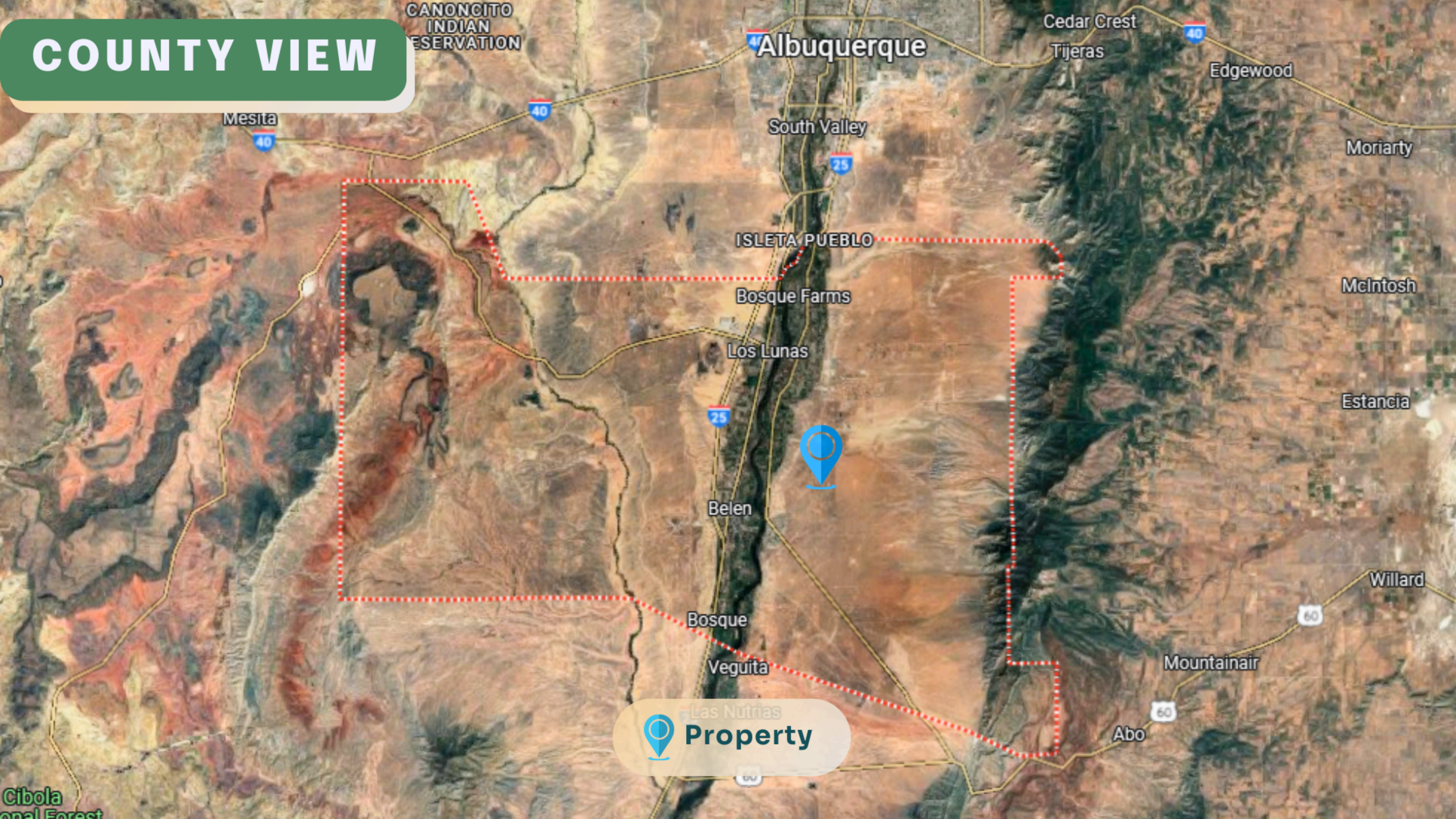
Rio Communities

Los Trujillos-Gabaldon

 **Property**

25

# COUNTY VIEW



CANONCITO  
INDIAN  
RESERVATION

Albuquerque

Cedar Crest  
Tijeras

Edgewood

Mesita

South Valley

Moriarty

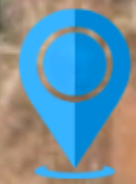
ISLETA PUEBLO

Bosque Farms

McIntosh

Los Lunas

Estancia



Belen

Willard

Bosque

Mountainair

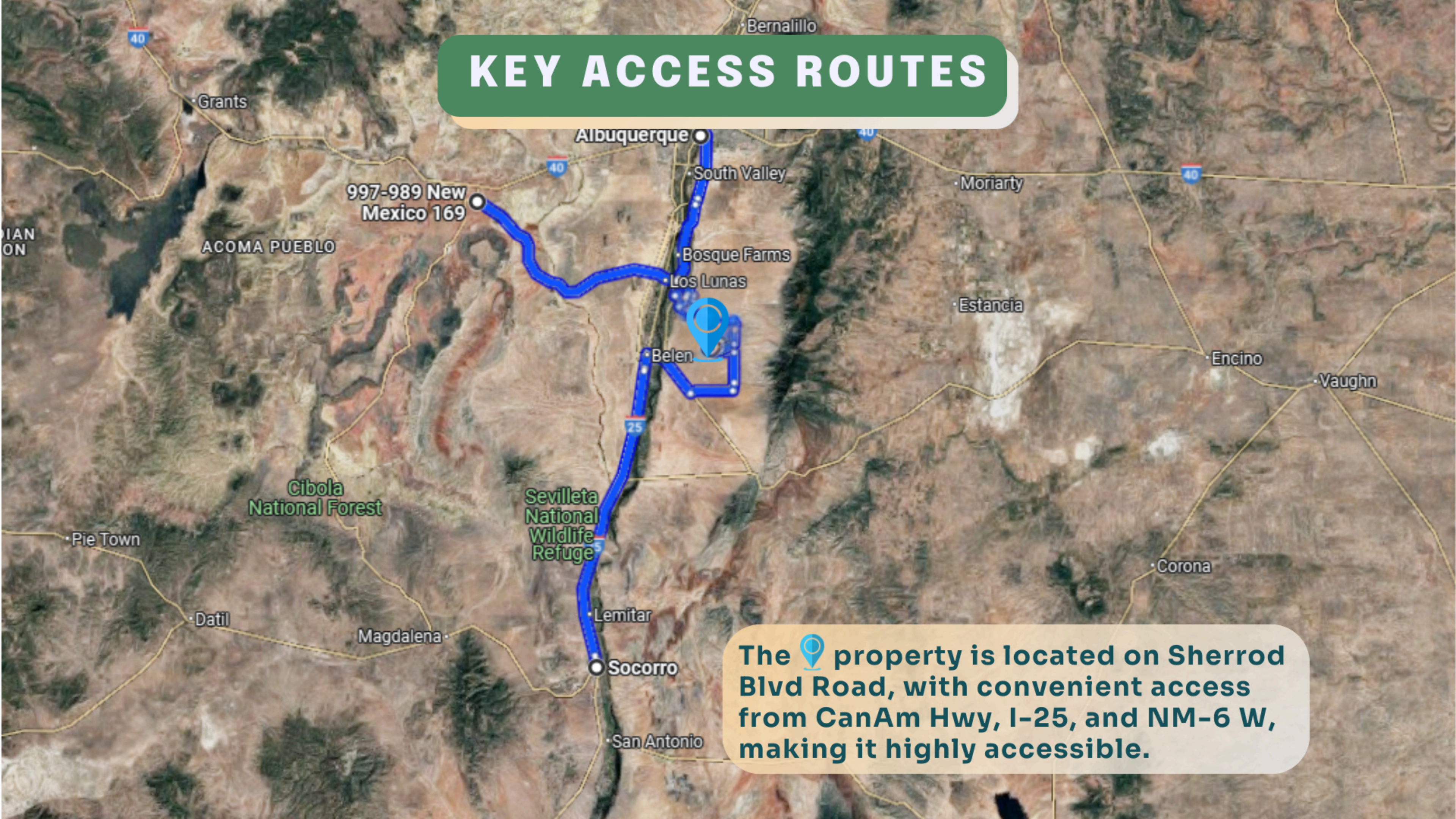
Veguita

Abo

Las Nutrias  
Property

Cibola  
National Forest

# KEY ACCESS ROUTES




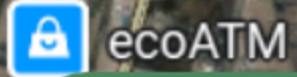
997-989 New Mexico 169

ACOMA PUEBLO

Cibola National Forest

Sevilleta National Wildlife Refuge

The  property is located on Sherrod Blvd Road, with convenient access from CanAm Hwy, I-25, and NM-6 W, making it highly accessible.



# DRIVING DIRECTIONS

Belen

Sausal

47

47



Greg's Airstrip

Tierra Del Sol Golf Club

Pueblitos

Head east on NM-309 E/W Reinken Ave for 2.4 miles, continue on Manzano Expy for 1.9 miles, then turn left onto De Haan Loop and drive 1.3 miles. The property is on the right.

Jarales