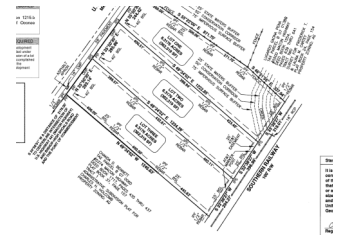


Bishop Estates Tract 1



Offered for \$250,000



+/- 8.3 Acres | Macon Hwy | Oconee County, GA | 30621

Southern Land Exchange is proud to present Bishop Estates Tract 1, an 8.3 acre all wooded, A-1 zoned property located in Bishop, GA (Oconee County). The tract is mostly level with a very gentle slope towards the back boundary line. The overall topography doesn't get much better. The tract consists of a mixture of mature pines and hardwoods. There's plenty of buildable acreage for your dream home and the beautiful wooded lot provides sufficient privacy along with minimal maintenance. Tract 1 has 244ft of frontage on Hwy 441/ Macon Hwy with access off Hwy 441 already in place via a small driveway into the property. Conveniently located half a mile from Bishop & 1.5 miles from Watkinsville. Additional tracts may be available. For more information or to set up a showing contact Travis Ebbert with Southern Land Exchange at 706-614-8840. Seller holds a real estate license in Georgia.

Travis Ebbert

Listing Agent

1551 Jennings Mill Rd. Suite 1400A

Phone: 706.549.5050

Mobile: 706.614.8840

Fax: 706.549.8909

Email:

tebbert@southernlandexchange.com



**Southern
Land Exchange**