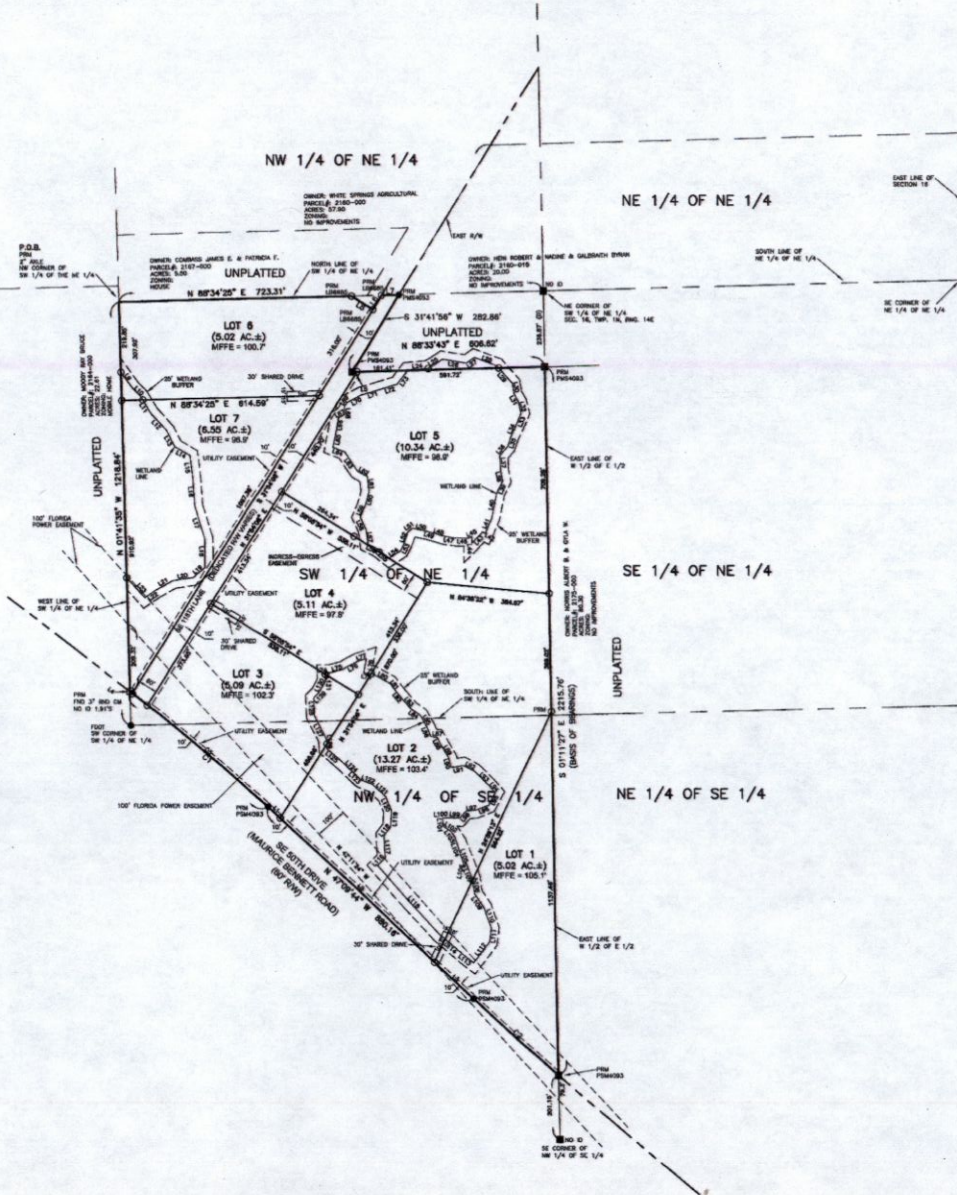




Bailey Bishop & Lane, Inc.
 P.O. Box 3717 1923 Capital Circle NE
 Lake City, FL 32056 Tallahassee, FL 32308
 Ph. 386-752-5640 Ph. 850-894-1200
 Eng. Lic. 7362 Survey Lic. LB-0006685
 BBL Job Number: L071204RAT

TIMBERLINE ESTATES REPLAT

IN
SECTION 16, TOWNSHIP 1 NORTH, RANGE 14 EAST
HAMILTON COUNTY, FLORIDA



CURVE	RADIUS	DELTA ANGLE	CHORD BEARING	CHORD LENGTH	ARC LENGTH
C1	3750.58	04°52'19"	N 49°34'43" W	462.83	462.83
C2	50182.04	01°01'56"	N 71°53'39" W	386.20	386.20
C3	2750.84	59°35'55"	N 49°52'33" W	582.59	582.82

LINE	BEARING	DISTANCE	LINE	BEARING	DISTANCE
L1	N 47°09'44" W	61.68	L87	S 71°31'13" W	21.90
L2	N 47°09'44" W	66.03	L88	S 71°31'13" W	21.90
L3	N 47°09'44" W	107.48	L89	S 71°31'13" W	21.90
L4	N 52°29'21" W	13.38	L90	S 71°31'13" W	21.90
L5	N 58°28'43" W	12.28	L91	S 71°31'13" W	21.90
L6	N 31°44'08" E	52.52	L92	S 71°31'13" W	21.90
L7	N 58°28'43" W	12.28	L93	S 71°31'13" W	21.90
L8	N 57°58'59" E	79.54	L94	S 71°31'13" W	21.90
L9	N 32°33'11" W	46.27	L95	S 71°31'13" W	21.90
L10	N 46°13'12" W	30.95	L96	S 71°31'13" W	21.90
L11	N 39°34'48" W	61.19	L97	S 71°31'13" W	21.90
L12	N 42°22'11" W	73.70	L98	S 71°31'13" W	21.90
L13	N 29°58'59" E	58.23	L99	S 71°31'13" W	21.90
L14	N 59°21'39" W	39.82	L100	S 71°31'13" W	21.90
L15	N 07°23'11" W	10.44	L101	S 71°31'13" W	21.90
L16	N 04°09'50" W	90.07	L102	S 71°31'13" W	21.90
L17	N 17°08'59" W	105.74	L103	S 71°31'13" W	21.90
L18	N 01°21'30" W	41.20	L104	S 71°31'13" W	21.90
L19	N 50°19'07" W	48.01	L105	S 71°31'13" W	21.90
L20	N 81°47'43" W	19.55	L106	S 71°31'13" W	21.90
L21	N 60°53'54" E	64.89	L107	S 71°31'13" W	21.90
L22	N 59°02'25" E	36.97	L108	S 71°31'13" W	21.90
L23	N 47°24'58" E	65.56	L109	S 71°31'13" W	21.90
L24	N 85°07'49" W	69.20	L110	S 71°31'13" W	21.90
L25	N 58°28'43" W	34.85	L111	S 71°31'13" W	21.90
L26	N 81°02'50" W	78.38	L112	S 71°31'13" W	21.90
L27	N 54°52'58" W	39.88	L113	S 71°31'13" W	21.90
L28	N 88°44'33" W	74.56	L114	S 71°31'13" W	21.90
L29	N 41°52'58" W	72.80	L115	S 71°31'13" W	21.90
L30	N 107°18'50" W	34.69	L116	S 71°31'13" W	21.90
L31	N 59°50'59" W	28.19	L117	S 71°31'13" W	21.90
L32	N 12°58'10" W	36.53	L118	S 71°31'13" W	21.90
L33	N 31°42'24" E	33.43	L119	S 71°31'13" W	21.90
L34	N 29°21'03" E	42.39	L120	S 71°31'13" W	21.90
L35	N 18°44'59" E	31.79	L121	S 71°31'13" W	21.90
L36	N 41°19'07" E	38.07	L122	S 71°31'13" W	21.90
L37	N 03°01'18" W	46.88	L123	S 71°31'13" W	21.90
L38	N 11°10'48" W	39.53	L124	S 71°31'13" W	21.90
L39	N 22°59'38" W	44.03	L125	S 71°31'13" W	21.90
L40	N 19°59'09" W	77.98	L126	S 71°31'13" W	21.90
L41	N 23°59'09" W	53.14	L127	S 71°31'13" W	21.90
L42	S 82°17'45" W	10.58	L128	S 71°31'13" W	21.90
L43	S 42°28'14" W	63.87	L129	S 71°31'13" W	21.90
L44	S 02°17'42" W	20.33	L130	S 71°31'13" W	21.90
L45	N 89°43'58" E	10.44	L131	S 71°31'13" W	21.90
L46	S 86°53'59" E	10.44	L132	S 71°31'13" W	21.90
L47	S 81°02'58" E	37.60	L133	S 71°31'13" W	21.90
L48	S 73°02'59" E	10.44	L134	S 71°31'13" W	21.90
L49	S 79°11'31" E	28.81	L135	S 71°31'13" W	21.90
L50	S 79°58'59" E	41.82	L136	S 71°31'13" W	21.90
L51	N 39°23'59" E	11.24	L137	S 71°31'13" W	21.90
L52	N 18°30'58" E	36.89	L138	S 71°31'13" W	21.90
L53	N 32°58'09" E	29.03	L139	S 71°31'13" W	21.90
L54	N 59°30'22" E	44.29	L140	S 71°31'13" W	21.90
L55	S 52°03'08" E	47.47	L141	S 71°31'13" W	21.90
L56	S 64°18'22" E	34.74	L142	S 71°31'13" W	21.90
L57	S 07°07'18" E	49.97	L143	S 71°31'13" W	21.90
L58	S 56°12'27" E	10.44	L144	S 71°31'13" W	21.90
L59	S 33°05'51" E	38.23	L145	S 71°31'13" W	21.90
L60	S 15°14'13" W	46.24	L146	S 71°31'13" W	21.90
L61	S 39°24'49" W	31.11	L147	S 71°31'13" W	21.90
L62	S 62°58'59" W	34.92	L148	S 71°31'13" W	21.90
L63	S 70°52'03" W	69.88	L149	S 71°31'13" W	21.90
L64	S 68°58'09" E	58.83	L150	S 71°31'13" W	21.90
L65	S 11°07'22" W	61.91	L151	S 71°31'13" W	21.90
L66	S 09°39'59" W	130.27	L152	S 71°31'13" W	21.90

DEVELOPER:
SOUTHEAST LAND GROUP, INC.
RONALD RATLIFF, PRESIDENT
106 NORTH HATLEY STREET
JASPER, FL 32052
(386) 792-8484

SURVEYOR:
MARY O'NEAL
P.O. BOX 3717
LAKE CITY, FL 32056
(386) 752-5640

LEGEND	
○	DENOTES 3/8" IRON ROD & CAP SET (B8888)
●	DENOTES IRON PIPE OR REBAR FOUND
□	DENOTES 4"x4" CONCRETE MONUMENT SET (B8888)
■	DENOTES 4"x4" CONCRETE MONUMENT FOUND
■	DENOTES NAIL & DISK FOUND (DF)
⊙	DENOTES 4"x4" CONCRETE MONUMENT (B8888) UNLESS OTHERWISE NOTED
±	MORE OR LESS
PC	POINT OF CURVATURE
PT	POINT OF TANGENCY
P	POINT OF INTERSECTION
PRC	POINT OF REVERSE CURVATURE
POC	POINT OF COMMENCEMENT
R	RADIUS
T	TANGENT
L	ARC LENGTH
Δ	CENTRAL ANGLE
CH	CHORD BEARING & DISTANCE
POP	PERMANENT CONTROL POINT
PRM	PERMANENT REFERENCE MONUMENT
R/W	RIGHT OF WAY
FDOT	FLORIDA DEPARTMENT OF TRANSPORTATION
TWP	TOWNSHIP
RNG	RANGE
LB	LOANED BUSINESS
PLS	PROFESSIONAL LAND SURVEYOR
CL	CURVE NUMBER
L1	LINE NUMBER
—	CONTOUR
MFE	FINISH FLOOR ELEVATION
PM	PROFESSIONAL SURVEY MAPPER
N	NORTH
E	EAST
S	SOUTH
W	WEST
C	CENTRALE
P	PLAT
CL	CALCULATED
BE	BEARING
NO ID	NO IDENTIFICATION
FIN	FOUND
CM	CONCRETE MONUMENT
#	IRON PIPE
RBC	IRON PIPE & CAP
RE	REBAR
RR	REBAR & CAP
RE	REBAR
IR	IRON ROD & CAP
NL	NAIL
N&D	NAIL & DISK
ORF	OFFICIAL RECORDS BOOK
POB	POINT OF BEGINNING
SEC	SECTION
BM	BENCHMARK
ELEV	ELEVATION
AC	ADDRESS
—	FLOW ARROW
○	SUR BORING