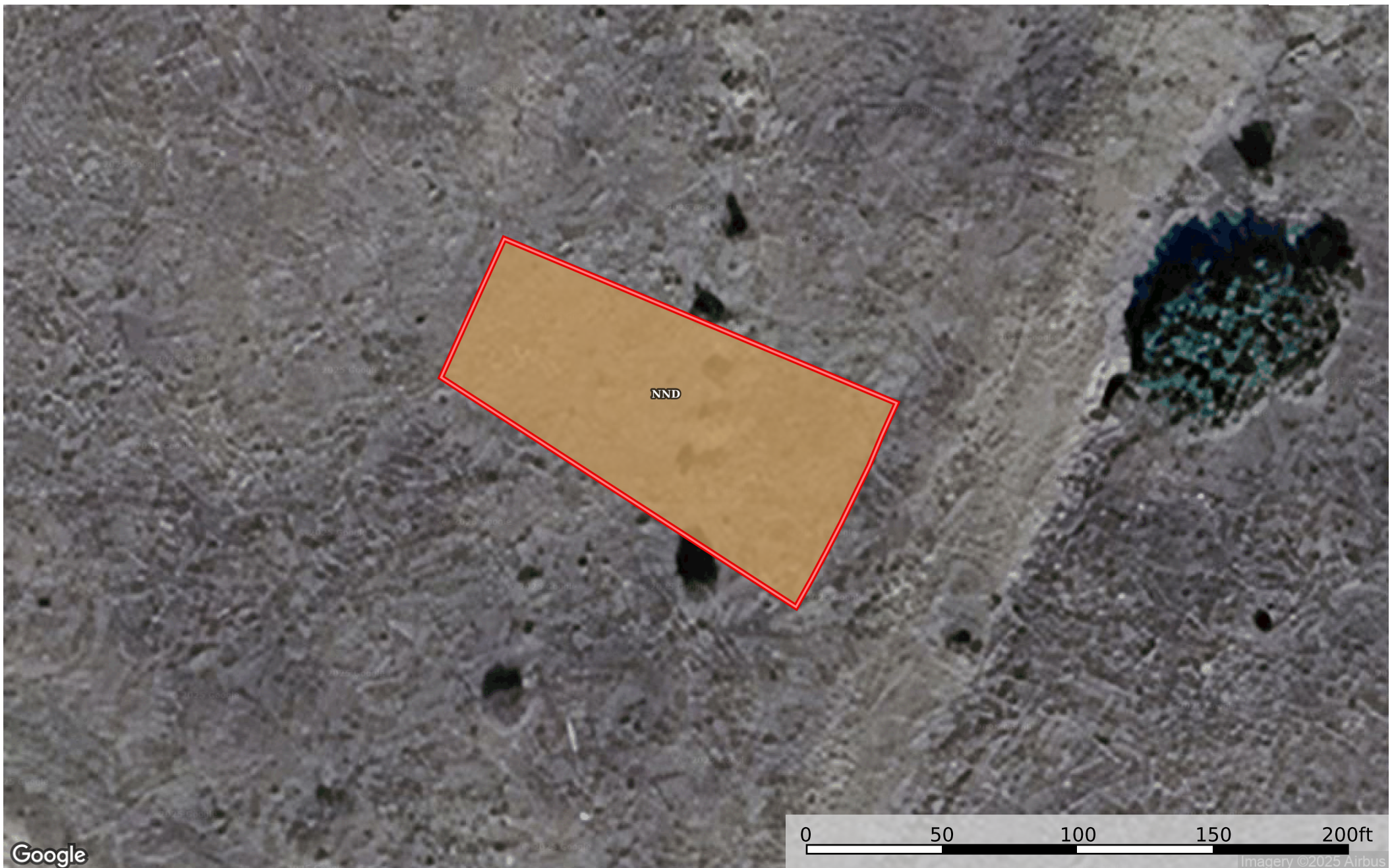
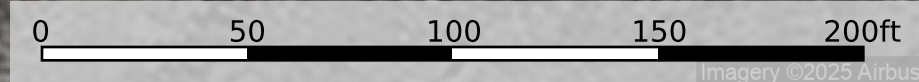


0.22 Acre Colorado City, Pueblo County, CO 4735324026
Pueblo County, Colorado, 0.22 AC +/-



Google



Imagery ©2025 Airbus

 Boundary

Boundary 0.25 ac

SOIL CODE	SOIL DESCRIPTION	ACRES	%	CPI	NCCPI	CAP
NnD	Nunn stony loam, 3 to 9 percent slopes	0.25	100	0	34	6e
TOTALS		0.25(*)	100%	-	34.0	6

(*) Total acres may differ in the second decimal compared to the sum of each acreage soil. This is due to a round error because we only show the acres of each soil with two decimal.

