

ROLLING ACRES ADDITION TO

HORSESHOE BEND ESTATES
 CONTAINING 188 LOTS AND 14 ACRES MORE OR LESS ALL LOCATED IN S1/2 OF SE 1/4 SECTION 6, T-18-N, R-7-W, IZARD COUNTY, KANSAS.

OWNERS CERTIFICATION
 WE HEREBY CERTIFY THAT WE ARE THE OWNERS OF THE PROPERTY SHOWN AND DESCRIBED HEREON, THAT WE ADOPT THE SUBDIVISION AND DEDICATE PERPETUAL USE OF ALL STREETS AND EASEMENTS AS NOTED.

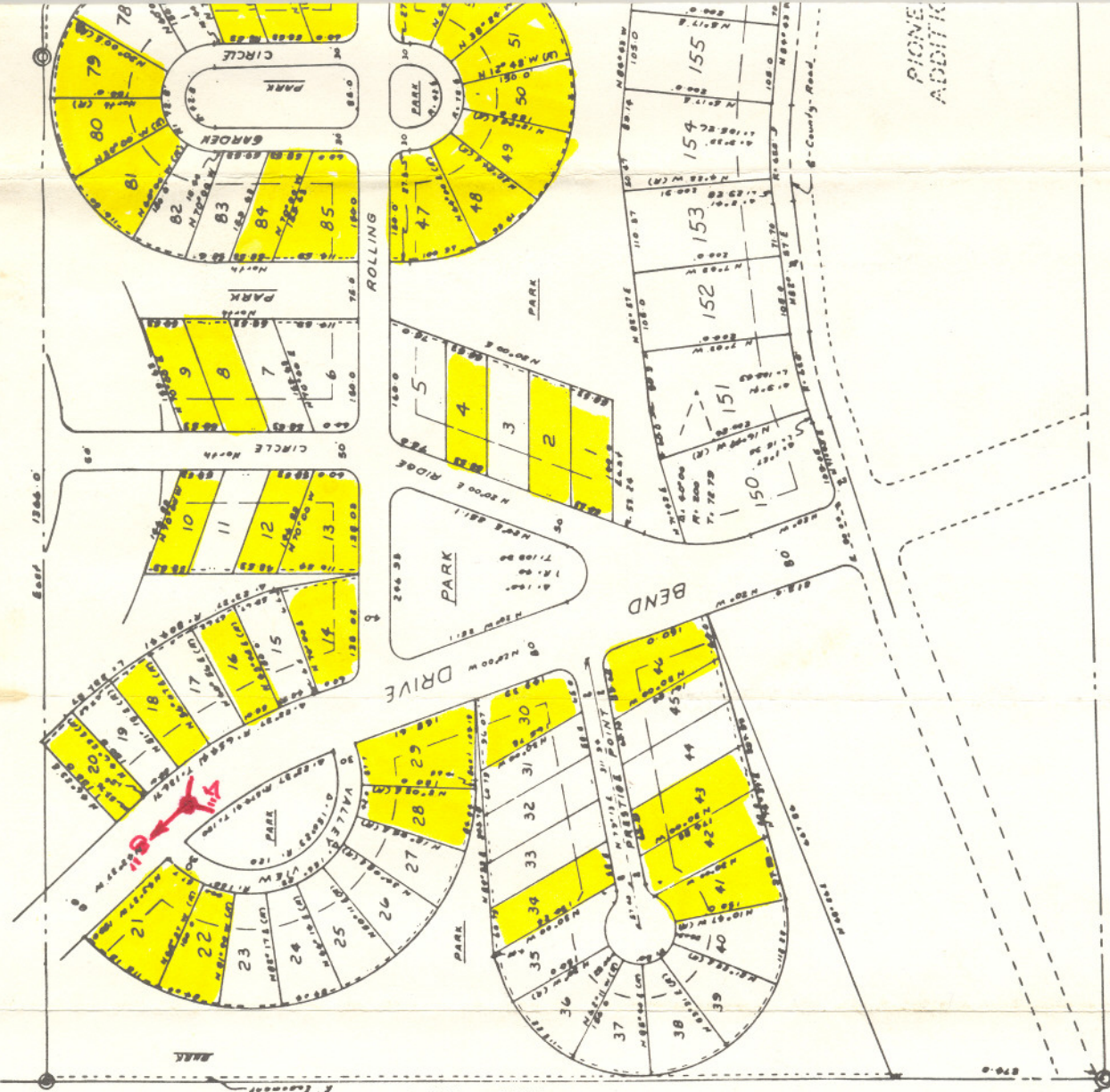
HORSESHOE DEVELOPMENT CORPORATION
 BY: *[Signature]*

13
ROLLING ACRES

FILED FOR OF IN BOOK

HW Co. SW 1/4 Sec 35, T. 18 N., R. 7 W., S. 4 E., Arkansas
 1001.0

HW Co. SW 1/4 Sec 35, T. 18 N., R. 7 W., S. 4 E., Arkansas
 1001.0



LAND SURVEYOR'S CERTIFICATION
 I HEREBY CERTIFY THAT THE PLAT SHOWN AND DESCRIBED
 HEREON IS THE RESULT OF A SURVEY MADE 8-15-1927 THAT
 IT IS A TRUE AND ACCURATE SURVEY AND THE MONUMENTS
 WERE FOUND OR SET AS NOTED.

James W. Cook
 JAMES W. COOK, R.L.S.
 ARKANSAS CERTIFICATE NO. 43

ROLLING
 ADDITION
 HORSESHOE BEND
 CONTAINING 188 LOTS
 OR LESS ALL LOCATED
 SECTION 6, T-18-N-R
 ARKANSAS.

PIONEER
 ADDITION