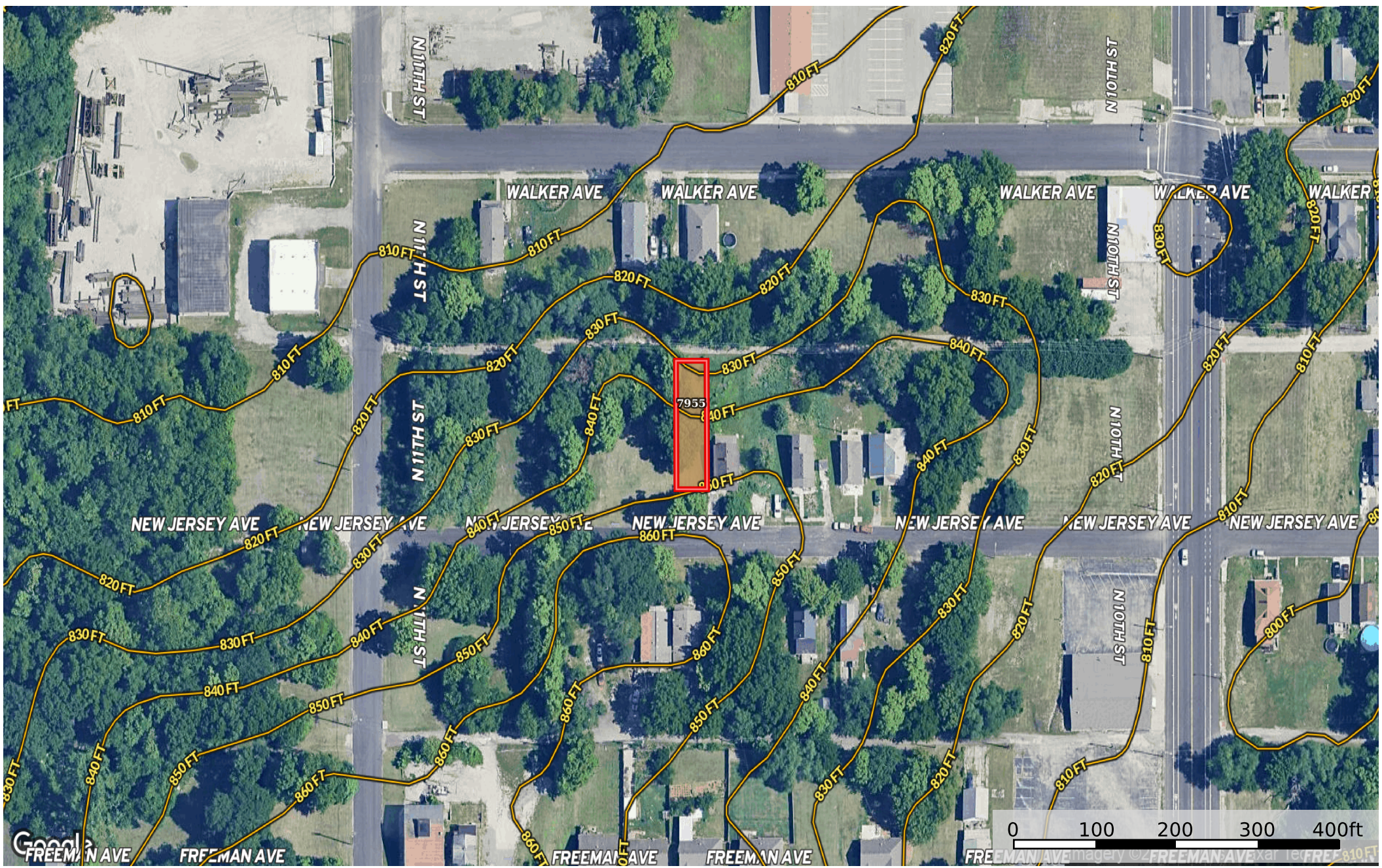


0.11 Acre Kansas City, Wyandotte County, KS 081224
Wyandotte County, Kansas, 0.11 AC +/-



 Boundary

Boundary 0.12 ac

SOIL CODE	SOIL DESCRIPTION	ACRES	%	CPI	NCCPI	CAP
7955	Knox silt loam, 7 to 12 percent slopes	0.12	100	0	85	3e
TOTALS		0.12(*)	100%	-	85.0	3

(*) Total acres may differ in the second decimal compared to the sum of each acreage soil. This is due to a round error because we only show the acres of each soil with two decimal.

