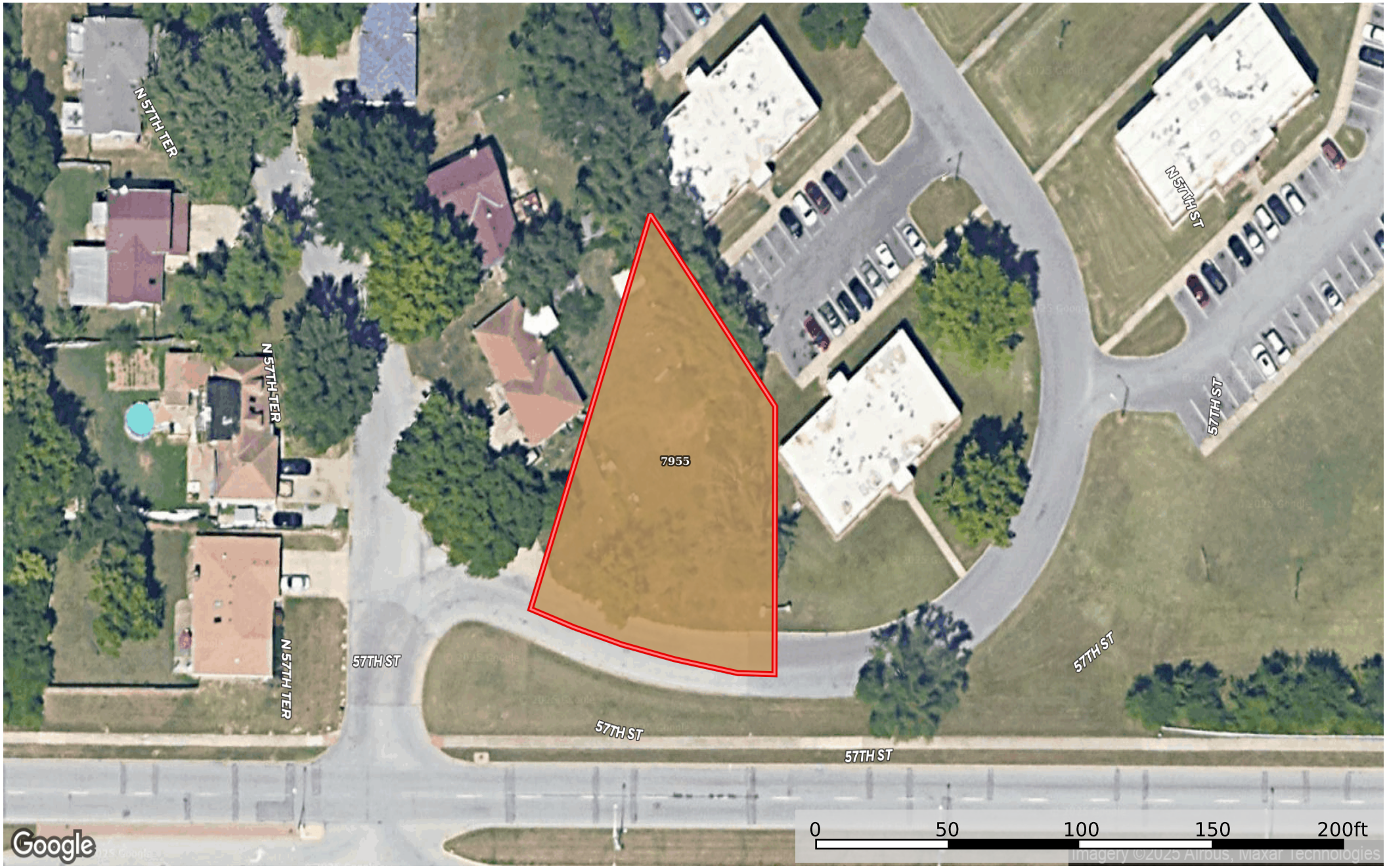


0.20 Acre Kansas City, Wyandotte County, KS 223031
Wyandotte County, Kansas, 0.2 AC +/-



 Boundary

|  Boundary 0.2 ac

SOIL CODE	SOIL DESCRIPTION	ACRES	%	CPI	NCCPI	CAP
7955	Knox silt loam, 7 to 12 percent slopes	0.2	100	0	85	3e
TOTALS		0.2(*)	100%	-	85.0	3

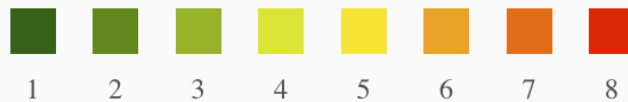
(*) Total acres may differ in the second decimal compared to the sum of each acreage soil. This is due to a round error because we only show the acres of each soil with two decimal.

Capability Legend

Increased Limitations and Hazards

Decreased Adaptability and Freedom of Choice Users

Land, Capability



	1	2	3	4	5	6	7	8
'Wild Life'	•	•	•	•	•	•	•	•
Forestry	•	•	•	•	•	•	•	
Limited	•	•	•	•	•	•	•	
Moderate	•	•	•	•	•	•		
Intense	•	•	•	•	•			
Limited	•	•	•	•				
Moderate	•	•	•					
Intense	•	•						
Very Intense	•							

Grazing Cultivation

(c) climatic limitations (e) susceptibility to erosion
 (s) soil limitations within the rooting zone (w) excess of water