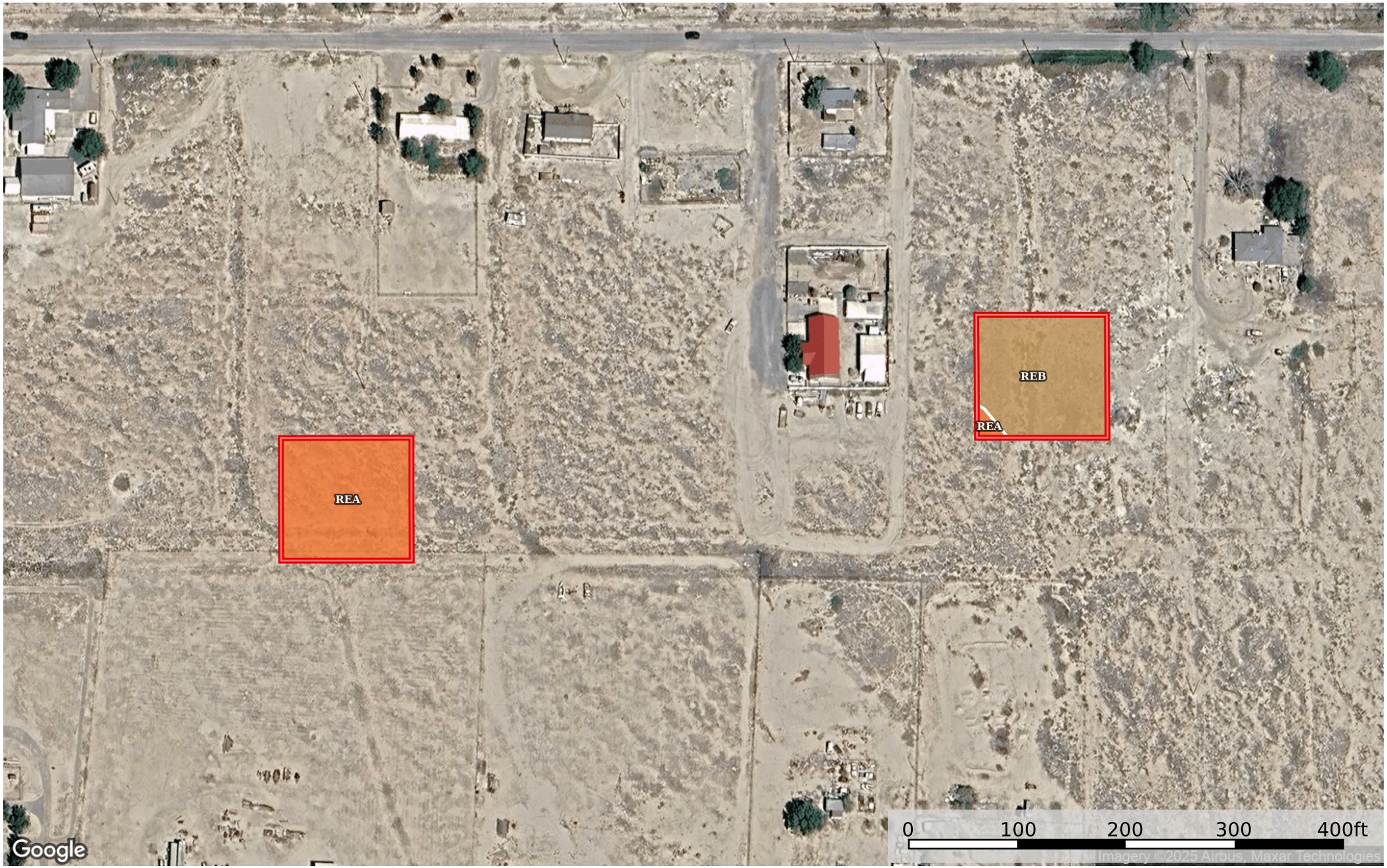
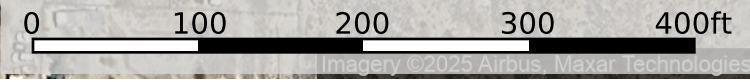


0.62 Acre Roswell, Chaves County, NM R001911/4-133-  
Chaves County, New Mexico, 0.62 AC +/-



Google



 Boundary



|  All Polygons 0.62 ac

SOIL CODE	SOIL DESCRIPTION	ACRES	%	CPI	NCCPI	CAP
ReA	Reakor loam, 0 to 1 percent slopes	0.32	51.61	0	18	7c
ReB	Reakor loam, 1 to 3 percent slopes	0.3	48.39	0	18	7e
TOTALS		0.62(*) )	100%	-	18.0	7.0

(\*) Total acres may differ in the second decimal compared to the sum of each acreage soil. This is due to a round error because we only show the acres of each soil with two decimal.

|  Boundary 0.31 ac

SOIL CODE	SOIL DESCRIPTION	ACRES	%	CPI	NCCPI	CAP
ReB	Reakor loam, 1 to 3 percent slopes	0.3	96.77	0	18	7e
ReA	Reakor loam, 0 to 1 percent slopes	0.01	3.23	0	18	7c
TOTALS		0.31(*) )	100%	-	18.0	7.0

(\*) Total acres may differ in the second decimal compared to the sum of each acreage soil. This is due to a round error because we only show the acres of each soil with two decimal.

|  Boundary 0.31 ac

SOIL CODE	SOIL DESCRIPTION	ACRES	%	CPI	NCCPI	CAP
ReA	Reakor loam, 0 to 1 percent slopes	0.31	100	0	18	7c
TOTALS		0.31(*) )	100%	-	18.0	7









(\*) Total acres may differ in the second decimal compared to the sum of each acreage soil. This is due to a round error because we only show the acres of each soil with two decimal.

## Capability Legend

Increased Limitations and Hazards

Decreased Adaptability and Freedom of Choice Users

Land, Capability

								
	1	2	3	4	5	6	7	8
'Wild Life'	•	•	•	•	•	•	•	•
Forestry	•	•	•	•	•	•	•	
Limited	•	•	•	•	•	•	•	
Moderate	•	•	•	•	•	•		
Intense	•	•	•	•	•			
Limited	•	•	•	•				
Moderate	•	•	•					
Intense	•	•						
Very Intense	•							

### Grazing Cultivation

(c) climatic limitations (e) susceptibility to erosion

(s) soil limitations within the rooting zone (w) excess of water