

For Sale:

www.wilnat.com

Madison County Livestock Farm

1435 US RT 42, LONDON, OH



**15.7
ACRES**

1129' Frontage on US Rt. 42

A nice old homestead with functional outbuildings for livestock, hay and equipment on improved pastures in an excellent location.

HOMESTEAD

1-1/2 Story, vinyl sided, 3 BR, 1-1/2 BA, 8 Rooms, 1,474 sq. ft., Gas Furnace

OUTBUILDINGS

58x65 Hay & Livestock Barn w/concrete floor, 40x60 loft, auto waterers

45x90 Morton pole bldg w/42x90 lean to w/concrete floor, livestock feeding area, auto waterers & working facilities

110x125 & 87x40 outside concrete feeding & loafing area

**48x45 Hay & Livestock pole bldg w/auto waterers
Fencing is vinyl, woven wire & livestock panels**



LOCATED: From London go west 1 mile on US 42, property on left.



WILSON NATIONAL LLC
A REAL ESTATE & AUCTION GROUP

CALL MARK WILSON 937-402-1961 or BRANDON WILSON 937-763-1993

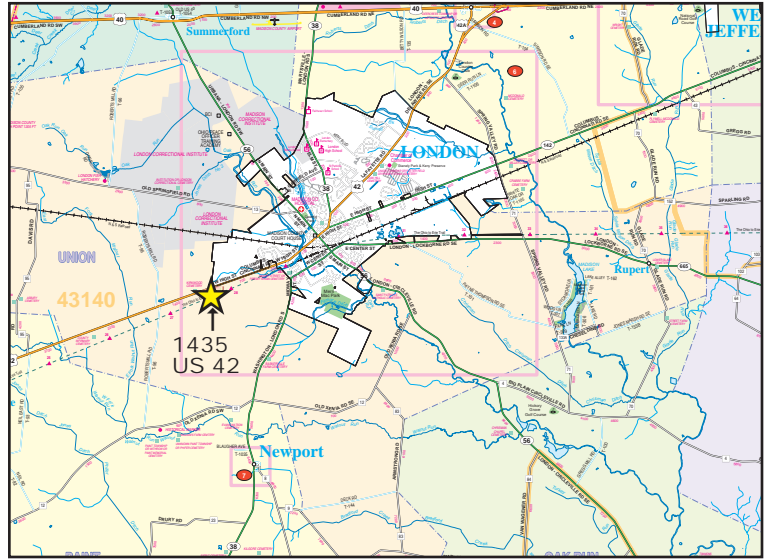
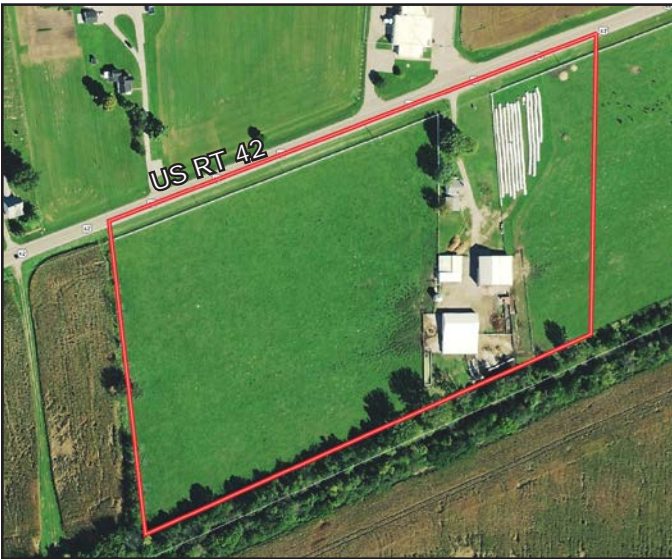
PARCEL #3000144000
Subject property coming out of a 25.3 acre parcel

\$550,000



WILSON NATIONAL LLC
A REAL ESTATE & AUCTION GROUP

TAXES ESTIMATED
\$1,403.39 PER HALF



800-450-3440

www.wilnat.com