



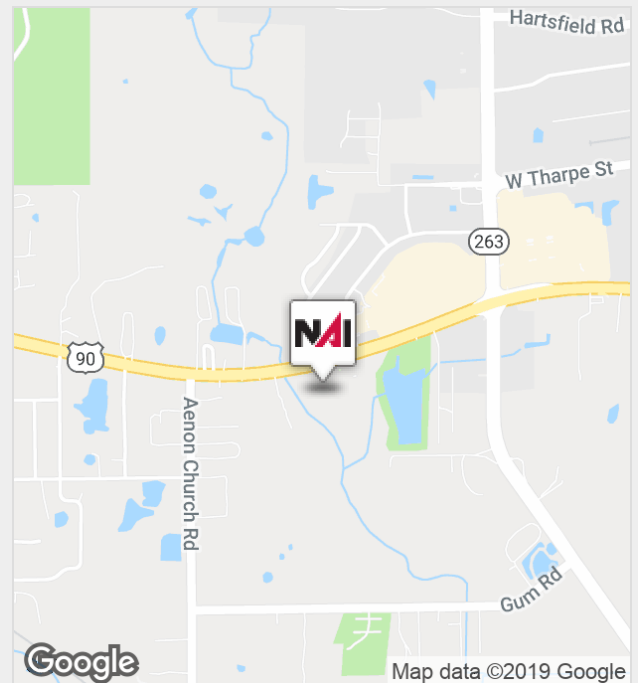
W. Tennessee St. - Keel Plaza

Tallahassee, Florida 32304

Property Features

- 13.49 Acres
- Zoned Commercial Parkway (CP)
- Over 400' of highway frontage on US 90
- Traffic Count: 24,500 Vehicles Per Day
- Approved for 55,000 SF with storm water facility and infrastructure in place
- Sewer tap fees are paid
- APN#: 21-30-20-003-0000

Sale Price: \$2,500,000



For more information:

Jim Taube, CCIM

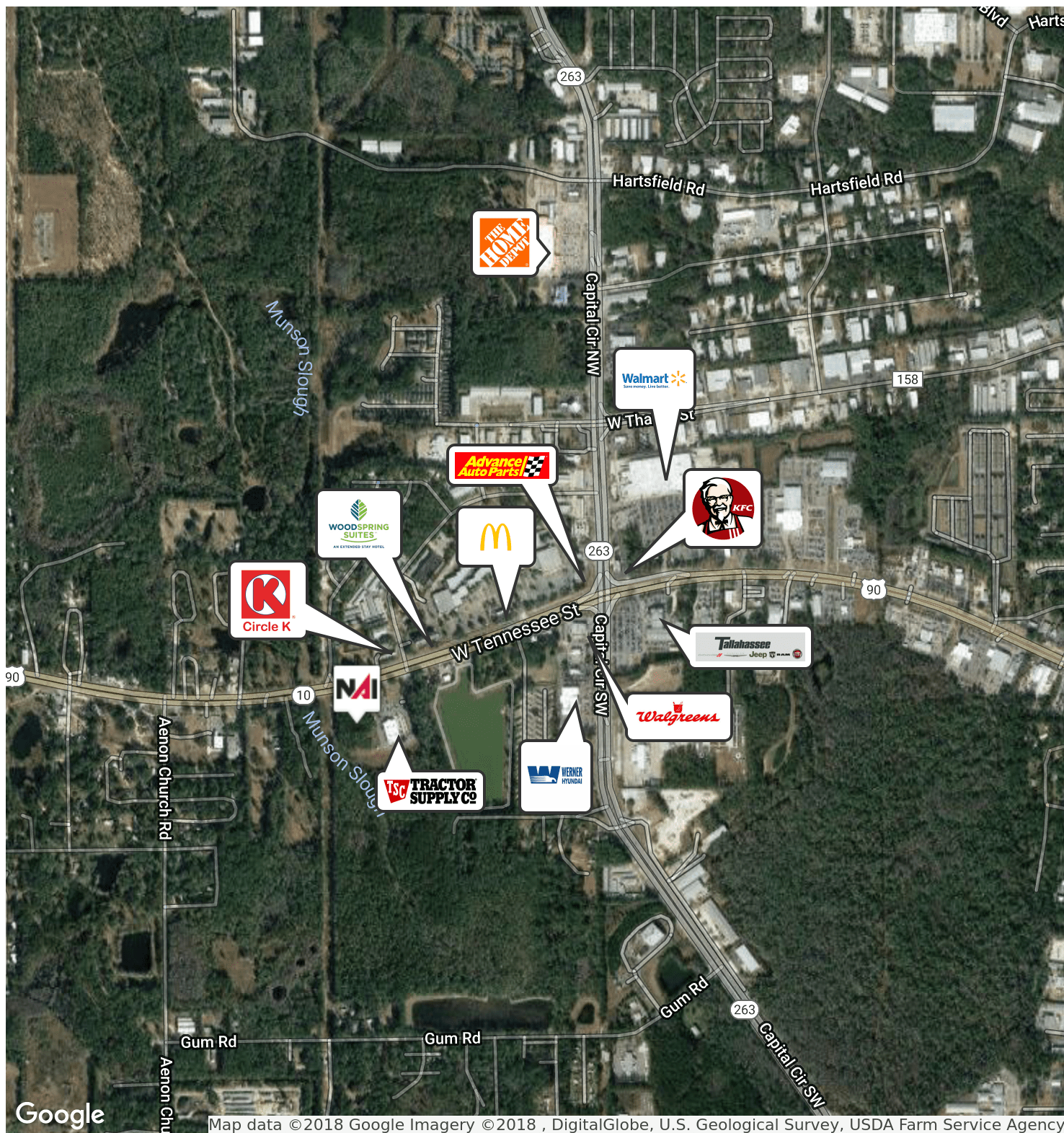
O: 850 224 2300 • C: 850 545 5649 • jtaube@talcor.com

NO WARRANTY OR REPRESENTATION, EXPRESS OR IMPLIED, IS MADE AS TO THE ACCURACY OF THE INFORMATION CONTAINED HEREIN, AND THE SAME IS SUBMITTED SUBJECT TO ERRORS, OMISSIONS, CHANGE OF PRICE, RENTAL OR OTHER CONDITIONS, PRIOR SALE, LEASE OR FINANCING, OR WITHDRAWAL WITHOUT NOTICE, AND OF ANY SPECIAL LISTING CONDITIONS IMPOSED BY OUR PRINCIPALS NO WARRANTIES OR REPRESENTATIONS ARE MADE AS TO THE CONDITION OF THE PROPERTY OR ANY HAZARDS CONTAINED THEREIN ARE ANY TO BE IMPLIED.

NAI TALCOR
1018 Thomasville Road, Suite 200A,
Tallahassee, FL 32303
850 224 2300
talcor.com

For Sale

Retail Map

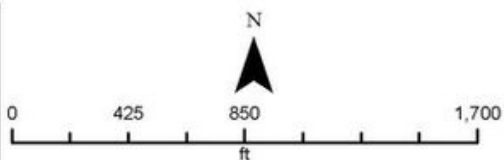


For Sale

Parcel Map



213020030000



Akin Akinyemi, R.A.
Leon County Property Appraiser

315 S. Calhoun St. Third Floor
Tallahassee, FL 32301

Phone: (850) 606-6200
Fax: (850) 606-6201

Email: admin@leonpa.org
Website: leonpa.org

DISCLAIMER: This product has been compiled from the most accurate source data from Leon County, the City of Tallahassee, and the Leon County Property Appraiser's Office. However, this product is for reference purposes only and is not to be construed as a legal document or survey instrument. Any reliance on the information contained herein is at the user's own risk. Leon County, the City of Tallahassee, and the Leon County Property Appraiser's Office assume no responsibility for any use of the information contained herein or any loss resulting therefrom.
Date Drawn: Jun 21, 2017