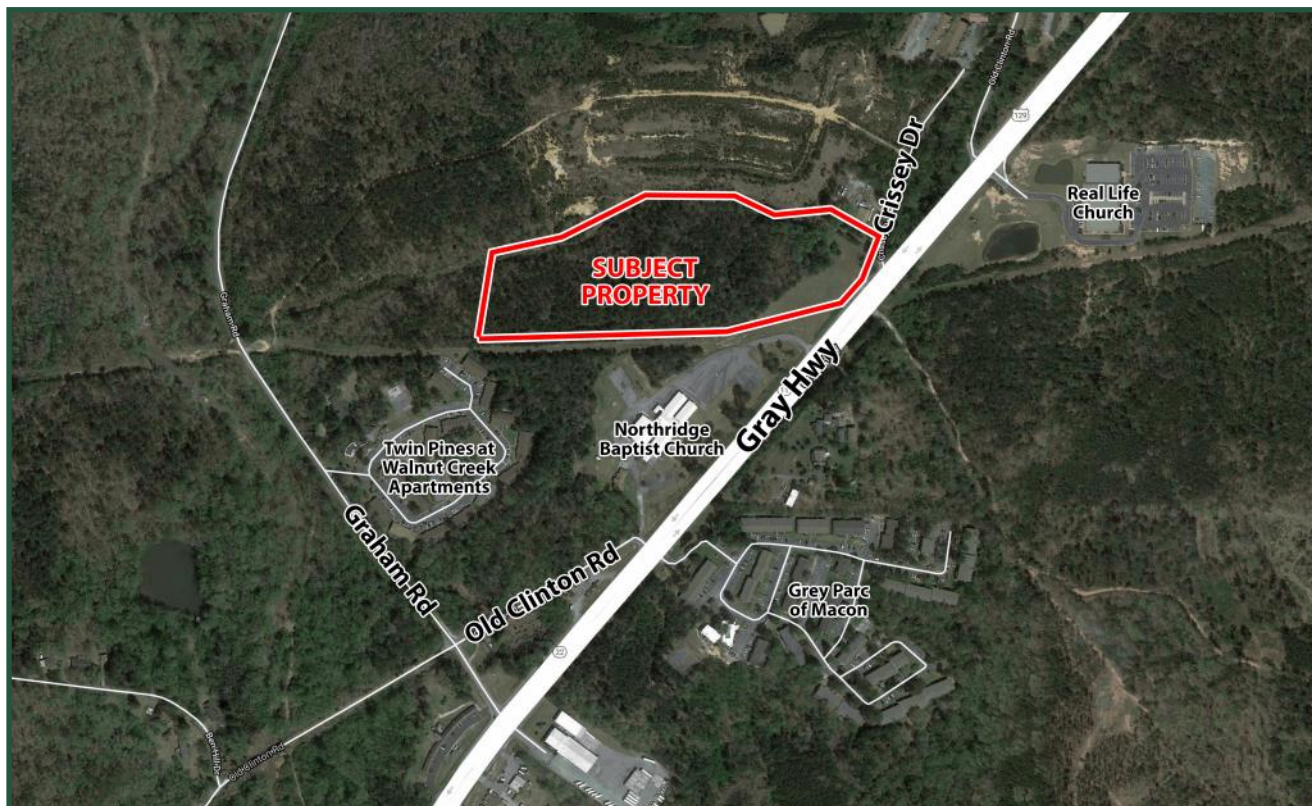


Land For Sale

2360 Gray Highway
Macon, GA. 31211
Bibb County



Lot Size: 15.08 Acres

Zoning: R-3

Utilities: All available

Traffic Count: 22,400 VPD

Description: 18.23 wooded acres, with approximately 460' of frontage on Gray Highway and Crissey Drive.

Location: Property is located behind and adjacent to Northridge Baptist Church.

Sale Price: \$15,000 Per Surveyed Acre

**FOR MORE
INFORMATION
CONTACT**

Trip Wilhoit, CCIM, ALC
478-746-9421 (O)
478-960-4080 (C)
trip@fickling.com

Patty Burns, CCIM, ALC
478-746-9421 (O)
478-951-5100 (C)
patty@fickling.com

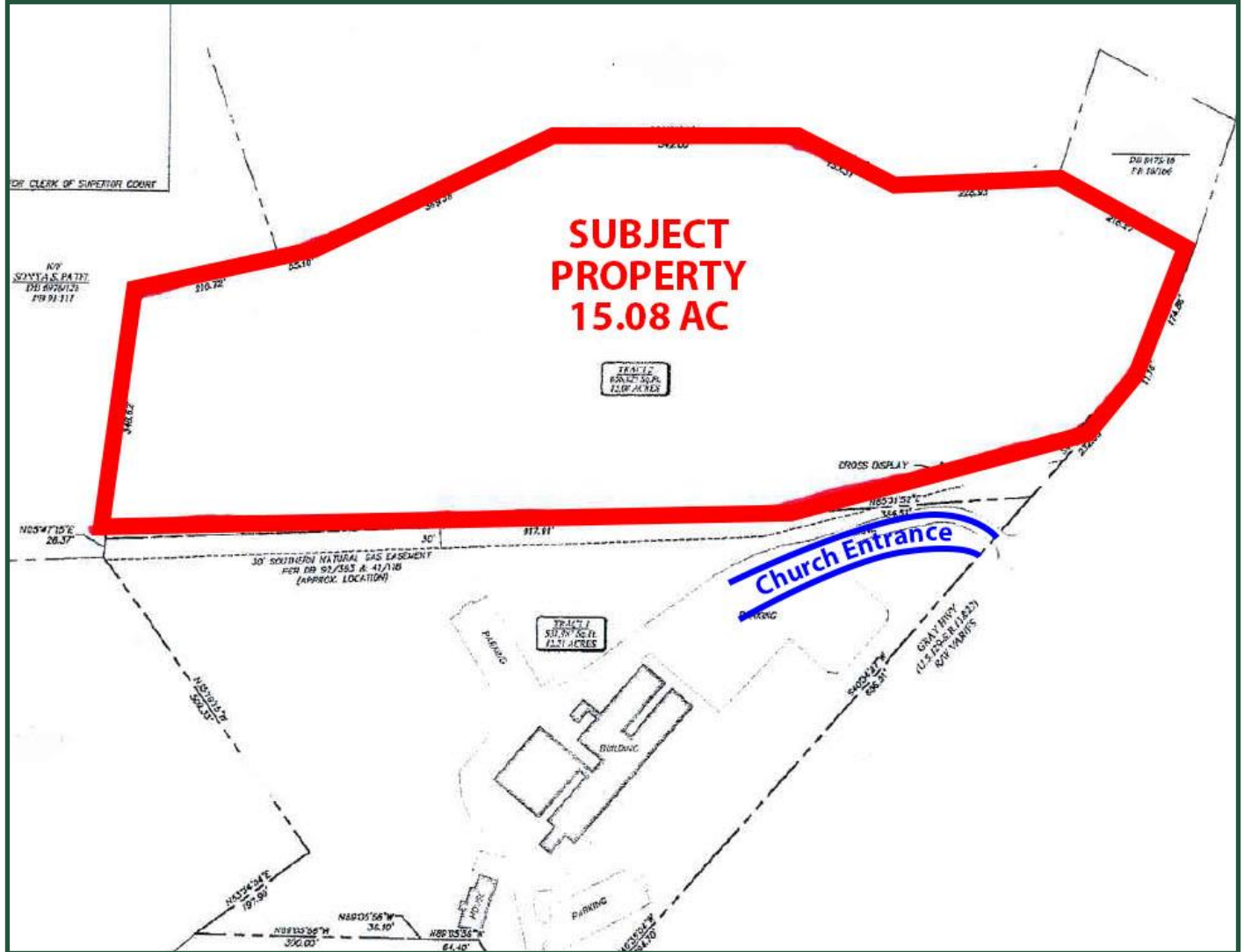
georgiacommercialrealestate.net | commercial.fickling.com

577 Mulberry St, Suite 1100 * P.O. Box 310 * Macon, GA 31202 | Phone (478) 746-9421 | Fax (478) 742-2015

This information is from resources deemed to be reliable, no warranties or guarantees for accuracy are made by Fickling and Company

Land For Sale
 2360 Gray Highway
 Macon, GA. 31211
 Bibb County

PLAT



2020 Demos	1 Mile	3 Mile	5 Mile
Population	1,456	19,456	53,633
Median Age	35.0	37.6	36.9
Avg. HHI	\$47,123	\$48,061	\$54,400

**FOR MORE
 INFORMATION
 CONTACT**

Trip Wilhoit, CCIM, ALC
 478-746-9421 (O)
 478-960-4080 (C)
trip@fickling.com

Patty Burns, CCIM, ALC
 478-746-9421 (O)
 478-951-5100 (C)
patty@fickling.com

georgiacommercialrealestate.net | commercial.fickling.com

577 Mulberry St, Suite 1100 * P.O. Box 310 * Macon, GA 31202 | Phone (478) 746-9421 | Fax (478) 742-2015
 This information is from resources deemed to be reliable, no warranties or guarantees for accuracy are made by Fickling and Company