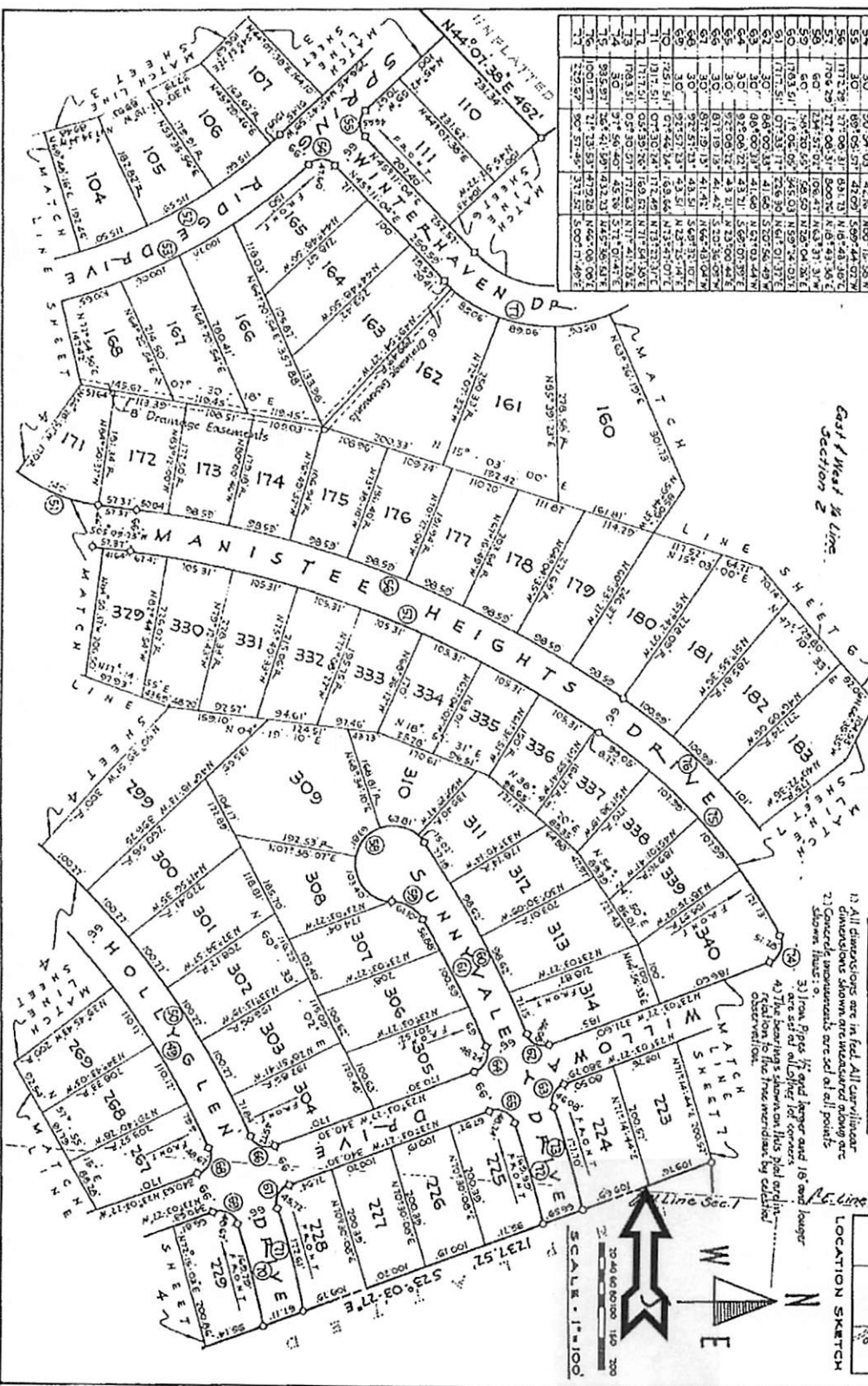


MANISTEE HEIGHTS NO.1

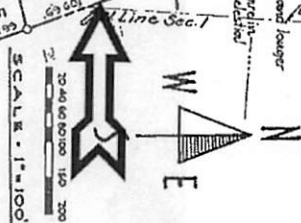
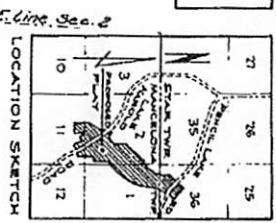
BEING A SUBDIVISION PART OF THE SOUTHWEST QUARTER OF SECTION 36, T30N, R5W, STEE TOWNSHIP; SECTION 6, THE WEST HALF OF SECTION 1, AND THE NORTHEAST QUARTER OF SECTION 11, T29N, R5W, MANISTEE TOWNSHIP, ANTEMI COUNTY, MICHIGAN

CURV. NO.	RADIUS	DELTA	CHORD BEARING	CHORD
49	7251.51'	60°45'07"	126.61'	133.30' S62.36°E
50	1817.51'	61°01'41"	133.70'	133.70' N33.44°E
51	2074.03'	76°03'40"	351.00'	143.51' S12.74°E
52	8075.52'	39°24'34"	244.51'	5.26' S00°43'E
53	8135.52'	39°24'34"	569.06'	5.26' S00°43'E
54	30.00'	90°00'00"	42.28'	100.00' S00°00'E
55	30.00'	90°00'00"	42.28'	100.00' S00°00'E
56	1772.29'	91°02'51"	83.73'	100.00' S00°00'E
57	1706.29'	91°02'51"	800.21'	N 61°43'36"E
58	30.00'	90°00'00"	42.28'	100.00' S00°00'E
59	30.00'	90°00'00"	42.28'	100.00' S00°00'E
60	30.00'	90°00'00"	42.28'	100.00' S00°00'E
61	30.00'	90°00'00"	42.28'	100.00' S00°00'E
62	30.00'	90°00'00"	42.28'	100.00' S00°00'E
63	30.00'	90°00'00"	42.28'	100.00' S00°00'E
64	30.00'	90°00'00"	42.28'	100.00' S00°00'E
65	30.00'	90°00'00"	42.28'	100.00' S00°00'E
66	30.00'	90°00'00"	42.28'	100.00' S00°00'E
67	30.00'	90°00'00"	42.28'	100.00' S00°00'E
68	30.00'	90°00'00"	42.28'	100.00' S00°00'E
69	30.00'	90°00'00"	42.28'	100.00' S00°00'E
70	7251.51'	60°45'07"	126.61'	133.30' S62.36°E
71	1817.51'	61°01'41"	133.70'	133.70' N33.44°E
72	2074.03'	76°03'40"	351.00'	143.51' S12.74°E
73	8075.52'	39°24'34"	244.51'	5.26' S00°43'E
74	8135.52'	39°24'34"	569.06'	5.26' S00°43'E
75	1001.97'	21°23'57"	144.50'	100.00' S00°00'E
76	2075.27'	39°24'34"	571.25'	100.00' S00°00'E



Cont'd West 1/2 line.
Section 2

- LEGEND
- 1) All dimensions are in feet. All subdivisions shown are in feet.
 - 2) Curved dimensions are in feet. All curved dimensions are in feet.
 - 3) Iron pins 1/2" and larger and 18" and longer are set at all offset corners.
 - 4) The bearings shown on this plan are in relation to the true meridian by celestial observation.



514473